

ZANESVILLE, OHIO

AL-864 (FAA)

25275

WAAS CH <b>72639</b> <b>W04A</b>	APP CRS <b>040°</b>	Rwy Ldg TDZE Apt Elev	<b>4999</b> <b>900</b> <b>900</b>
--	------------------------	-----------------------------	---

# RNAV (GPS) RWY 4

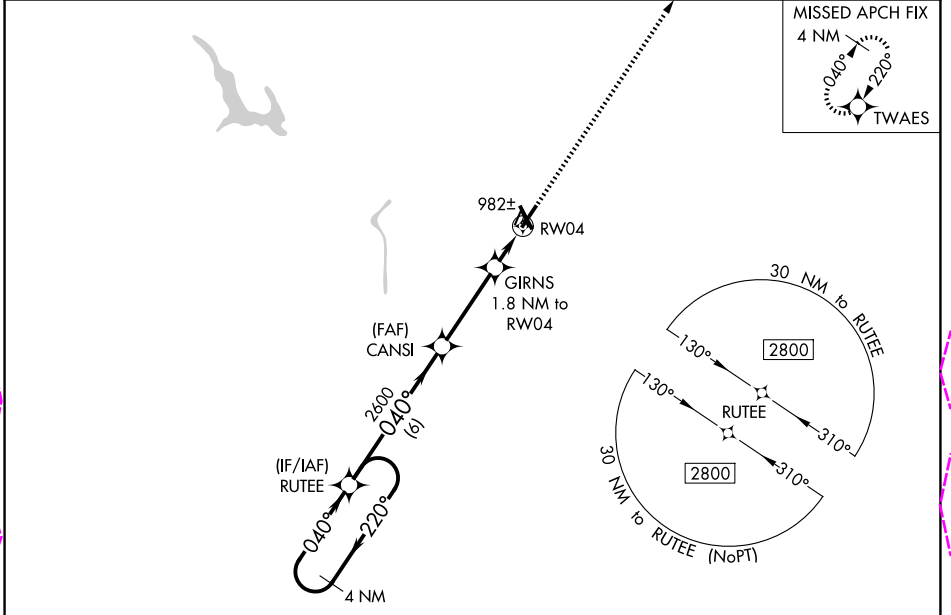
ZANESVILLE MUNI (ZZV)

RNP APCH - GPS.

For uncompensated Baro-VNAV systems, LNAV/VNAV NA below -21°C or above 54°C.  
Circling Rwy 16, 34 NA at night.

MISSED APPROACH:  
Climb to 2900 direct  
TWAES and hold.

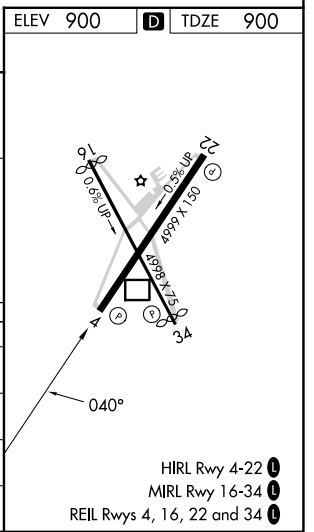
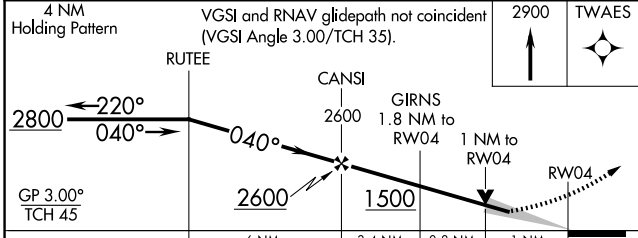
ASOS <b>127.0</b>	INDIANAPOLIS CENTER <b>124.45 323.275</b>	UNICOM <b>123.0 (CTAF)</b>
----------------------	--	-------------------------------



EC-2, 30 OCT 2025 to 27 NOV 2025

EC-2, 30 OCT 2025 to 27 NOV 2025

ELEV 900	<b>D</b> TDZE 900
----------	-------------------



CATEGORY	A	B	C	D
LPV DA		1150-3/4	250 (300-3/4)	
LNAV/VNAV DA		1155-3/4	255 (300-3/4)	
LNAV MDA		1280-1	380 (400-1)	
CIRCLING	1380-1 480 (500-1)	1420-1 520 (600-1)	1620-2 720 (800-2)	1620-2 1/4 720 (800-2 1/4)

ZANESVILLE, OHIO

Orig-A 13JUN24

39°57'N-81°54'W

# ZANESVILLE MUNI (ZZV) RNAV (GPS) RWY 4

HIRL Rwy 4-22 **1**  
MIRL Rwy 16-34 **1**  
REIL Rws 4, 16, 22 and 34 **1**

ZANESVILLE, OHIO

AL-864 (FAA)

25331

WAAS CH <b>72639</b> <b>W04A</b>	APP CRS <b>040°</b>	Rwy Ldg TDZE <b>900</b> Apt Elev <b>900</b>	<b>4999</b>
--	------------------------	---	-------------

# RNAV (GPS) RWY 4

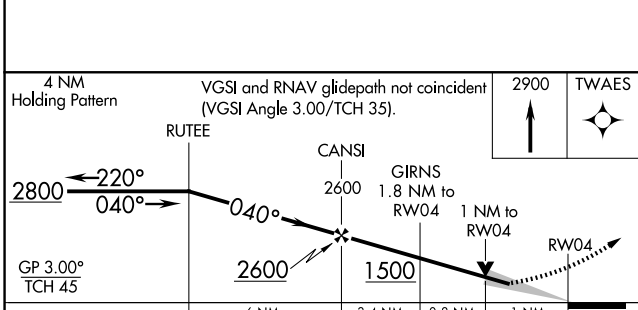
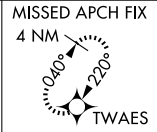
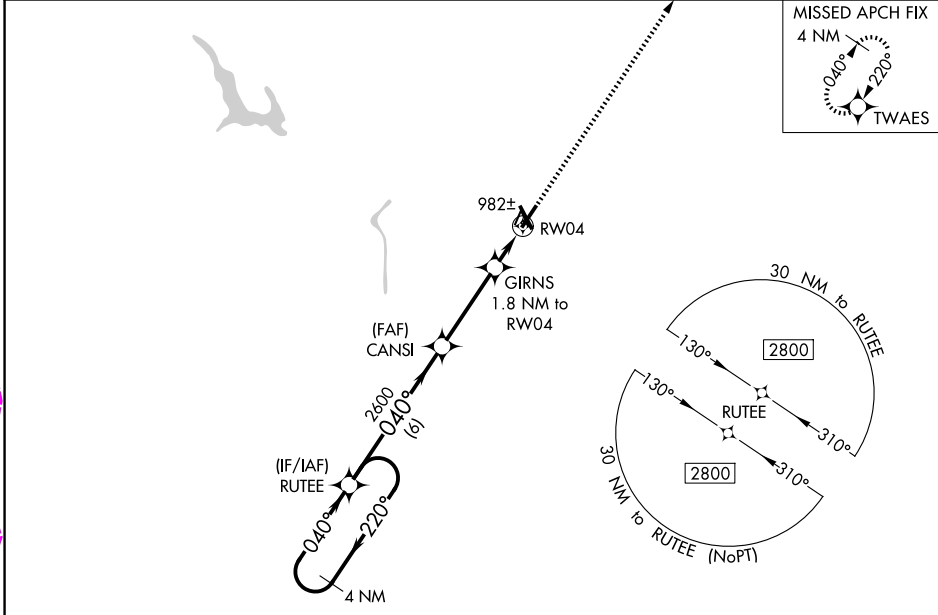
ZANESVILLE MUNI (ZZV)

RNP APCH - GPS.

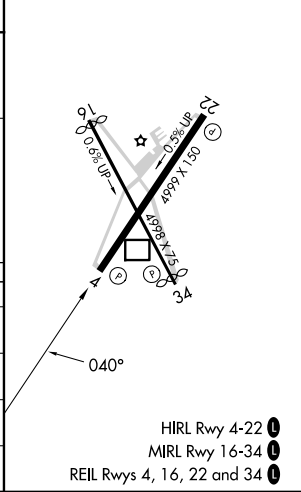
For uncompensated Baro-VNAV systems, LNAV/VNAV NA below -21°C or above 54°C.  
Circling Rwy 16, 34 NA at night.

MISSED APPROACH:  
Climb to 2900 direct  
TWAES and hold.

ASOS <b>127.0</b>	INDIANAPOLIS CENTER <b>124.45 323.275</b>	UNICOM <b>123.0 (CTAF)</b>
----------------------	--	-------------------------------



ELEV 900	<b>D</b> TDZE 900
----------	-------------------



CATEGORY	A	B	C	D
LPV DA		1150-3/4	250 (300-3/4)	
LNAV/VNAV DA		1155-3/4	255 (300-3/4)	
LNAV MDA		1280-1	380 (400-1)	
CIRCLING	1380-1 480 (500-1)	1420-1 520 (600-1)	1620-2 720 (800-2)	1640-2 1/4 740 (800-2 1/4)

ZANESVILLE, OHIO  
Orig-B 27NOV25

39°57'N-81°54'W

# ZANESVILLE MUNI (ZZV) RNAV (GPS) RWY 4

HIRL Rwy 4-22 **1**  
MIRL Rwy 16-34 **1**  
REIL Rws 4, 16, 22 and 34 **1**

EC-2 127 NOV 2025 to 25 DEC 2025

EC-2 27 NOV 2025 to 25 DEC 2025