

MANSFIELD, OHIO

AL-860 (FAA)

25275


WAAS CH 99611 W32A	APP CRS 323°	Rwy Ldg TDZE Apt Elev	9001 1293 1297
--	------------------------	-----------------------------	---

RNAV (GPS) RWY 32

MANSFIELD LAHM RGNL (MFD)

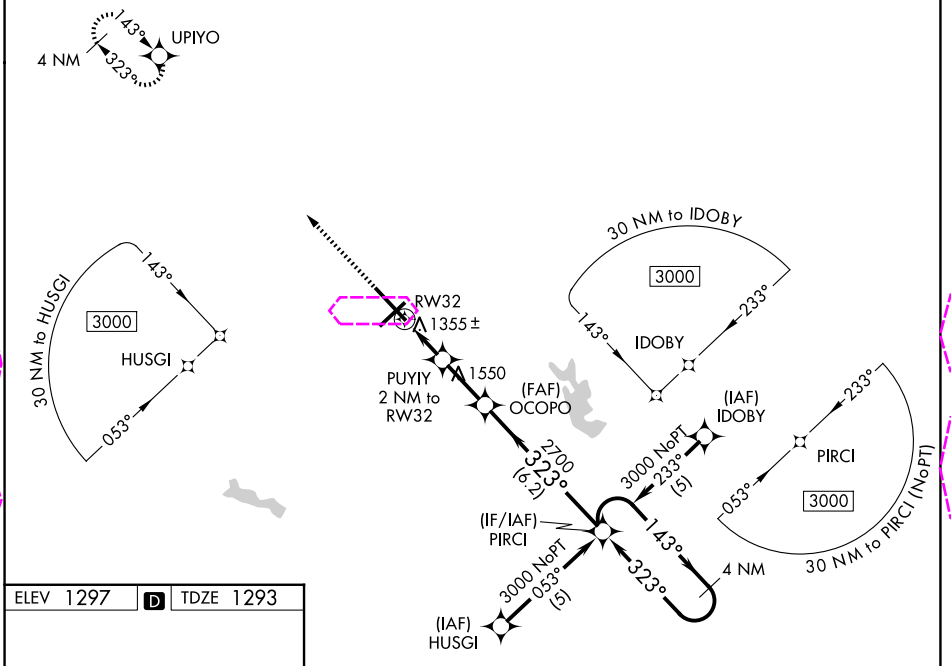
⚠ Baro-VNAV NA when using Marion altimeter setting. For uncompensated Baro-VNAV systems, LNAV/VNAV NA below -17°C (2°F) or above 46°C (114°F). DME/DME RNP-0.3 NA. When local altimeter not received, use Marion altimeter setting and increase all DA 107 feet and all MDA 120 feet, LNAV/VNAV all Cats visibility ½ SM, LNAV Cat C/D visibility ¾ SM and Circling Cat C/D visibility ½ SM. For inop MALS when using Marion altimeter setting increase LPV all Cats visibility to 1. VDP NA with Marion altimeter setting. ** RVR 1800 authorized with use of FD or AP or HUD to DA, NA when using Marion altimeter setting.

MALS



MISSED APPROACH:
Climb to 3000 direct UPIYO and hold.

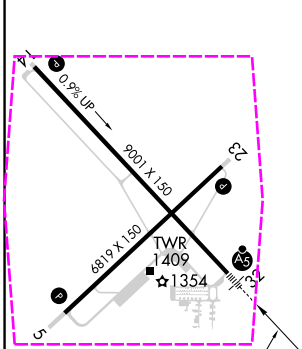
ATIS 125.3	CLEVELAND APP CON * 128.35 360.65	MANSFIELD TOWER * 119.8 (CTAF) 0291.775	GND CON 121.8 291.775	UNICOM 122.95
----------------------	---	---	---------------------------------	-------------------------



EC-2, 30 OCT 2025 to 27 NOV 2025

EC-2, 30 OCT 2025 to 27 NOV 2025

ELEV 1297	D	TDZE 1293
-----------	----------	-----------



HIRL Rwy 5-23 and 14-32
REIL Rwy 5 and 23

3000 UPIYO		PIRCI 4 NM Holding Pattern	
*LNAV only		GP 3.00 TCH 46	
RWY 32 1355±		OCOPO 2700	
PUIYI 1550		PIRCI 3000	
1 NM 1 NM 2.2 NM		6.2 NM	
1960	2700	143°	323°
3000	3000	143°	323°
CATEGORY	A	B	C
LPV DA**		1493/24	200 (200-½)
LNAV/VNAV DA		1789/60	496 (500-1½)
LNAV MDA	1660/24	367 (400-½)	1660/35 367 (400-¾)
CIRCLING	1760-1	463 (500-1)	2000-2 703 (800-2) 2000-2¼ 703 (800-2¼)

MANSFIELD, OHIO
Orig-F 13AUG20

40°49'N-82°31'W

MANSFIELD LAHM RGNL (MFD) RNAV (GPS) RWY 32

MANSFIELD, OHIO

AL-860 (FAA)

25331


WAAS CH 99611 W32A	APP CRS 323°	Rwy Ldg 9001 TDZE 1293 Apt Elev 1297
--	------------------------	---

RNAV (GPS) RWY 32

MANSFIELD LAHM RGNL (MFD)

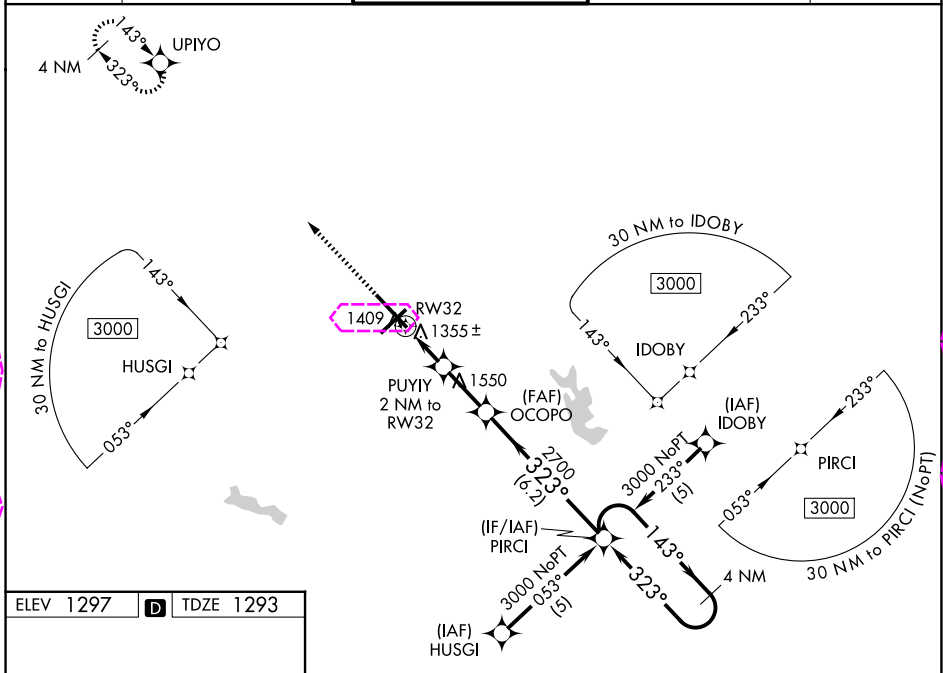
⚠ Baro-VNAV NA when using Marion altimeter setting. For uncompensated Baro-VNAV systems, LNAV/VNAV NA below -17°C (2°F) or above 46°C (114°F). DME/DME RNP-0.3 NA. When local altimeter not received, use Marion altimeter setting and increase all DA 107 feet and all MDA 120 feet, LNAV/VNAV all Cats visibility ½ SM, LNAV Cat C/D visibility ¾ SM and Circling Cat C/D visibility ½ SM. For inop MALSRS when using Marion altimeter setting increase LPV all Cats visibility to 1. VDP NA with Marion altimeter setting. ** RVR 1800 authorized with use of FD or AP or HUD to DA, NA when using Marion altimeter setting.

MALSRS

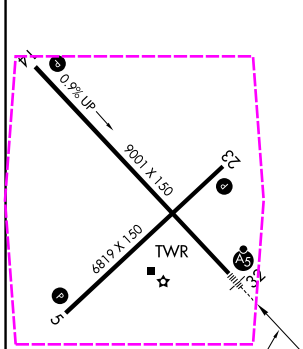


MISSED APPROACH:
Climb to 3000 direct UPIYO and hold.

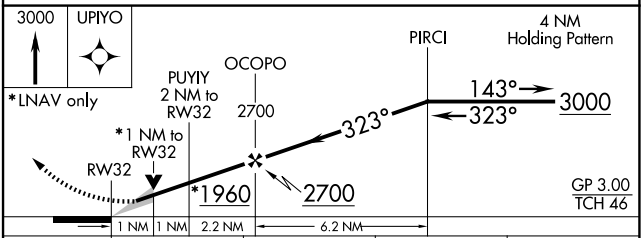
ATIS 125.3	CLEVELAND APP CON * 128.35 360.65	MANSFIELD TOWER * 119.8 (CTAF) 0291.775	GND CON 121.8 291.775	UNICOM 122.95
----------------------	---	---	---------------------------------	-------------------------



ELEV 1297	D	TDZE 1293
-----------	----------	-----------



HIRL Rwy 5-23 and 14-32
REIL Rwy 5 and 23



CATEGORY	A	B	C	D
LPV DA**		1493/24	200 (200-½)	
LNAV/VNAV DA		1789/60	496 (500-1½)	
LNAV MDA	1660/24	367 (400-½)	1660/35	367 (400-¾)
CIRCLING	1760-1	463 (500-1)	2000-2 703 (800-2)	2000-2½ 703 (800-2½)

MANSFIELD, OHIO
Orig-F 13AUG20

40°49'N-82°31'W

MANSFIELD LAHM RGNL (MFD) RNAV (GPS) RWY 32

EC-2, 27 NOV 2025 to 25 DEC 2025

EC-2, 27 NOV 2025 to 25 DEC 2025