

MANSFIELD, OHIO

AL-860 (FAA)

25275

WAAS CH 53426 W14A	APP CRS 143°	Rwy Ldg TDZE Apt Elev	9001 1276 1297
--	------------------------	-----------------------------	---

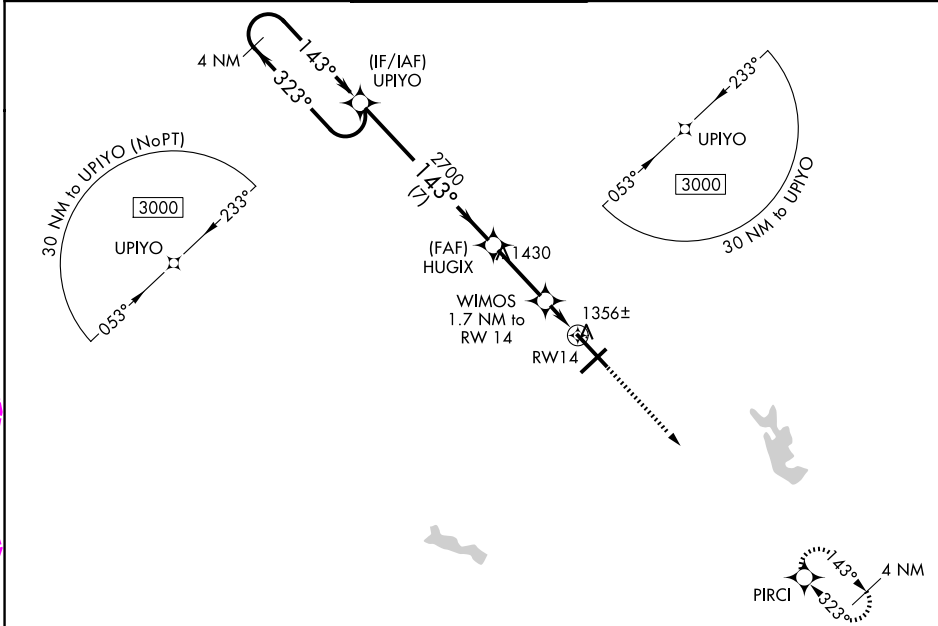
RNAV (GPS) RWY 14

MANSFIELD LAHM RGNL (MFD)

▼ For uncompensated Baro-VNAV systems, LNAV/VNAV NA below -18°C (0°F) or above 36°C (96°F).
▲ When local altimeter not received, use Marion altimeter setting and increase all DA 107 feet and all MDA 120 feet, and LPV all Cats visibility to 1 SM, LNAV/VNAV all Cats, and LNAV Cat C/D to 1 3/8 SM. Increase Circling Cat C/D visibility 1/2 SM. VDP and Baro-VNAV NA when using Marion altimeter setting.

MISSED APPROACH:
Climb to 3000 direct PIRCI and hold.

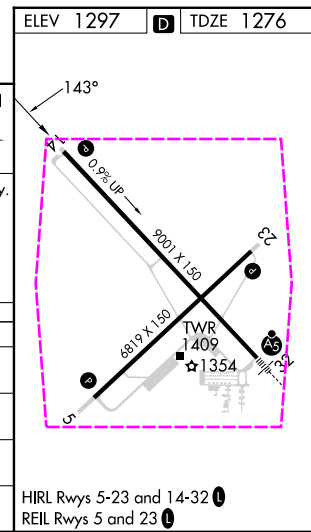
ATIS 125.3	CLEVELAND APP CON ★ 128.35 360.65	MANSFIELD TOWER ★ 119.8 (CTAF) 0 291.775	GND CON 121.8 291.775	UNICOM 122.95
----------------------	---	--	---------------------------------	-------------------------



EC-2, 30 OCT 2025 to 27 NOV 2025

EC-2, 30 OCT 2025 to 27 NOV 2025

4 NM Holding Pattern	UPIYO	HUGIX	WIMOS 1.7 NM to RW14	RW14
3000	323°	143°	2700	1820
GP 3.00°	TCH 42			
	7 NM	2.7 NM	0.7 NM	1 NM
CATEGORY	A	B	C	D
LPV DA		1476-3/4	200 (200-3/4)	
LNAV/VNAV DA		1557-7/8	281 (300-7/8)	
LNAV MDA		1620-1	344 (400-1)	
CIRCLING	1760-1	463 (500-1)	2000-2 703 (800-2)	2000-2 1/4 703 (800-2 1/4)



MANSFIELD, OHIO
Amdt 1B 13AUG20

40°49'N-82°31'W

MANSFIELD LAHM RGNL (MFD) RNAV (GPS) RWY 14

MANSFIELD, OHIO

AL-860 (FAA)

25331

WAAS CH 53426 W14A	APP CRS 143°	Rwy Ldg TDZE Apt Elev	9001 1276 1297
--	------------------------	-----------------------------	---

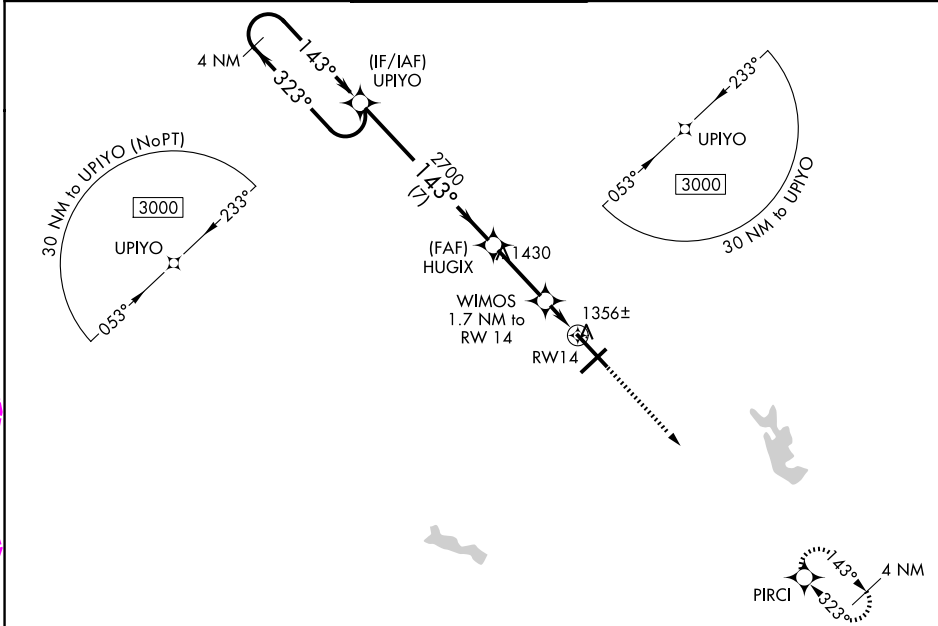
RNAV (GPS) RWY 14

MANSFIELD LAHM RGNL (MFD)

⚠ For uncompensated Baro-VNAV systems, LNAV/VNAV NA below -18°C (0°F) or above 36°C (96°F).
⚠ When local altimeter not received, use Marion altimeter setting and increase all DA 107 feet and all MDA 120 feet, and LPV all Cats visibility to 1 SM, LNAV/VNAV all Cats, and LNAV Cat C/D to 1 3/8 SM. Increase Circling Cat C/D visibility 1/2 SM. VDP and Baro-VNAV NA when using Marion altimeter setting.

MISSED APPROACH:
Climb to 3000 direct PIRCI and hold.

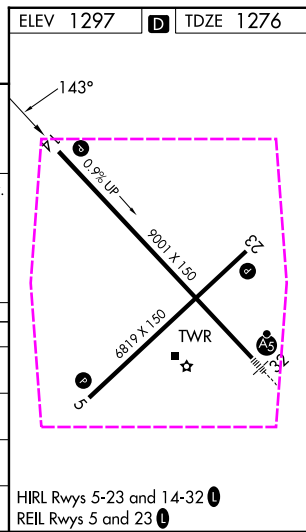
ATIS 125.3	CLEVELAND APP CON ★ 128.35 360.65	MANSFIELD TOWER ★ 119.8 (CTAF) 291.775	GND CON 121.8 291.775	UNICOM 122.95
----------------------	---	--	---------------------------------	-------------------------



EC-2, 27 NOV 2025 to 25 DEC 2025

EC-2, 27 NOV 2025 to 25 DEC 2025

4 NM Holding Pattern UPIYO		HUGIX		WIMOS 1.7 NM to RW14		RW14	
3000 ← 323°		2700		*1820		*LNAV only.	
143° →		143°		*1 NM to RW14		PIRCI	
GP 3.00°		2700		*1 NM to RW14		*LNAV only.	
TCH 42		2700		*1 NM to RW14		*LNAV only.	
7 NM		2.7 NM		0.7 NM		1 NM	
CATEGORY	A	B	C	D			
LPV DA		1476-3/4	200 (200-3/4)				
LNAV/VNAV DA		1557-7/8	281 (300-7/8)				
LNAV MDA		1620-1	344 (400-1)				
CIRCLING	1760-1	463 (500-1)	2000-2 703 (800-2)	2000-2 1/4 703 (800-2 1/4)			



MANSFIELD, OHIO
Amdt 1B 13AUG20

40°49'N-82°31'W

MANSFIELD LAHM RGNL (MFD) RNAV (GPS) RWY 14