

MANSFIELD, OHIO

AL-860 (FAA)

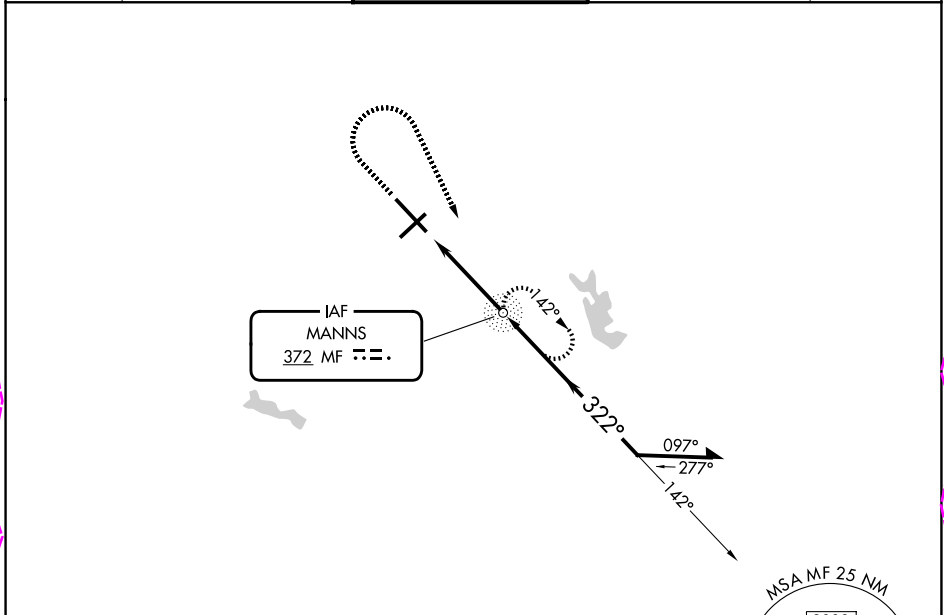
25275

NDB MF 372	APP CRS 322°	Rwy Ldg TDZE Apt Elev	9001 1293 1297
----------------------	------------------------	-----------------------------	---

NDB RWY 32
MANSFIELD LAHM RGNL (MF'D)

RADAR required for procedure entry.		MALSR AS	MISSED APPROACH: Climb to 2300 then climbing right turn to 3000 direct MF NDB and hold.
For inop ALS increase Cats A and B visibility to RVR 5500.			

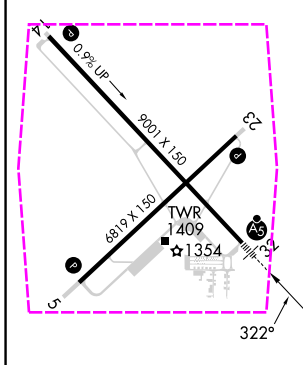
ATIS 125.3	CLEVELAND APP CON ★ 128.35 360.65	MANSFIELD TOWER ★ 119.8 (CTAF) 0 291.775	GND CON 121.8 291.775	UNICOM 122.95
----------------------	---	--	---------------------------------	-------------------------



EC-2, 30 OCT 2025 to 27 NOV 2025

EC-2, 30 OCT 2025 to 27 NOV 2025

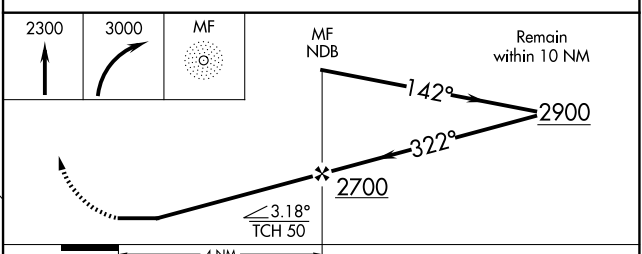
ELEV 1297	D	TDZE 1293
-----------	----------	-----------



HIRL Rwys 5-23 and 14-32
REIL Rwys 5 and 23

FAF to MAP 4 NM

Knots	60	90	120	150	180
Min:Sec	4:00	2:40	2:00	1:36	1:20



CATEGORY	A	B	C	D
S-32	1820/40	527 (600-¾)	1820/55	527 (600-1)
CIRCLING	1820-1	523 (600-1)	2000-2 703 (800-2)	2000-2¼ 703 (800-2¼)

MANSFIELD, OHIO
Amdt 12 02OCT25

40°49'N-82°31'W

MANSFIELD LAHM RGNL (MF'D)
NDB RWY 32

MANSFIELD, OHIO

AL-860 (FAA)

25331

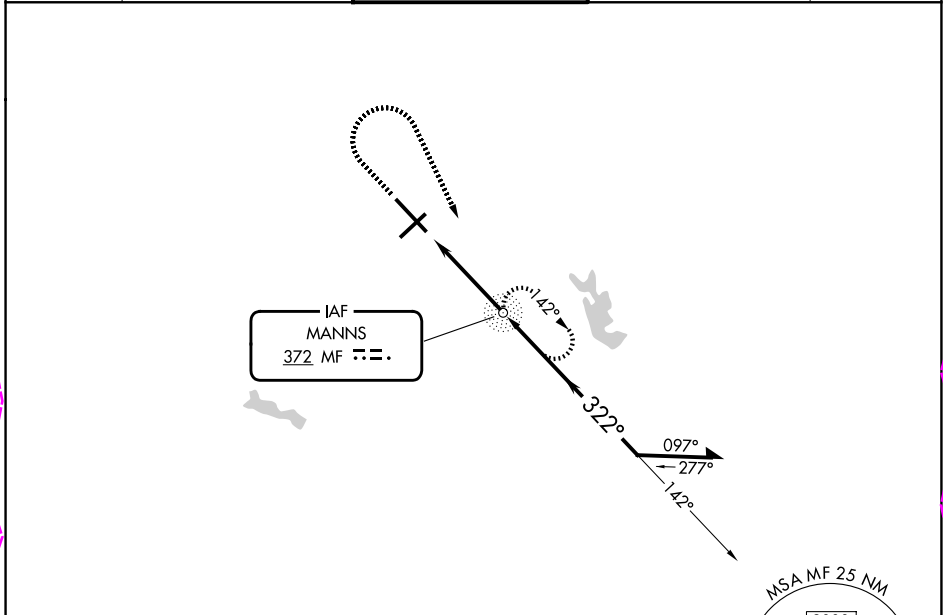
NDB MF 372	APP CRS 322°	Rwy Ldg TDZE Apt Elev	9001 1293 1297
----------------------	------------------------	-----------------------------	---

NDB RWY 32

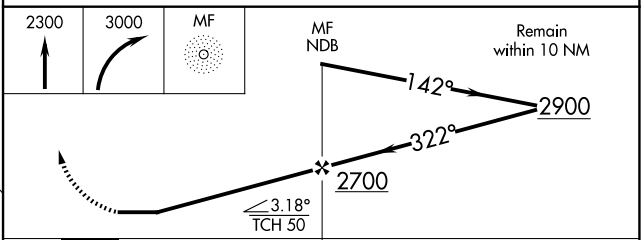
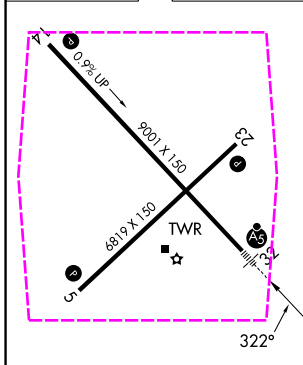
MANSFIELD LAHM RGNL (MF'D)

RADAR required for procedure entry.		MALSR AS	MISSED APPROACH: Climb to 2300 then climbing right turn to 3000 direct MF NDB and hold.
For inop ALS increase Cats A and B visibility to RVR 5500.			

ATIS 125.3	CLEVELAND APP CON ★ 128.35 360.65	MANSFIELD TOWER ★ 119.8 (CTAF) 0 291.775	GND CON 121.8 291.775	UNICOM 122.95
----------------------	---	--	---------------------------------	-------------------------



ELEV 1297 **D** TDZE 1293



CATEGORY	A	B	C	D
S-32	1820/40	527 (600-¾)	1820/55	527 (600-1)
CIRCLING	1820-1	523 (600-1)	2000-2 703 (800-2)	2000-2¼ 703 (800-2¼)

MANSFIELD, OHIO
Amdt 12 02OCT25

40°49'N-82°31'W

MANSFIELD LAHM RGNL (MF'D) NDB RWY 32

EC-2, 27 NOV 2025 to 25 DEC 2025

EC-2, 27 NOV 2025 to 25 DEC 2025