

RUSSELL, KANSAS

AL-856 (FAA)

25163

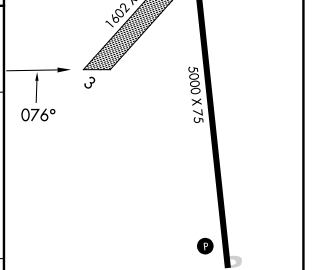
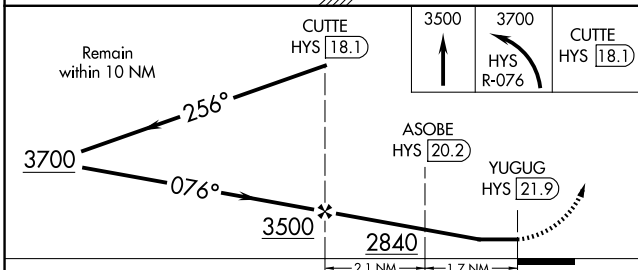
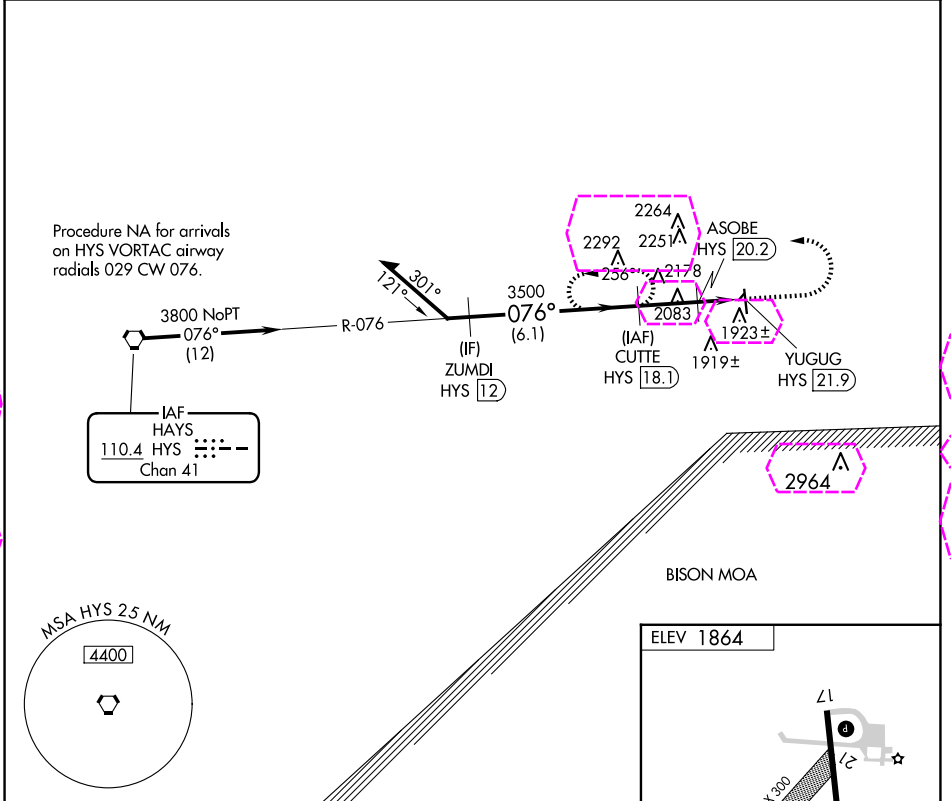
VORTAC HYS <b>110.4</b> Chan <b>41</b>	APP CRS <b>076°</b>	Rwy Ldg TDZE Apt Elev <b>N/A</b> <b>N/A</b> <b>1864</b>
--	------------------------	--

**VOR/DME-A**  
RUSSELL MUNI (RSL)

When local altimeter setting not received, use Hays altimeter setting; increase all MDA 80 feet and Cat C visibility ¼ SM. Circling NA to Rwy's 3 and 21.

MISSED APPROACH: Climb to 3500 then climbing left turn to 3700 via HYS R-076 to CUTTE/18.1 DME end hold.

ASOS <b>128,325</b>	KANSAS CITY CENTER <b>124.4 322.4</b>	UNICOM <b>122.7 (CTAF)</b>
------------------------	--	-------------------------------



CATEGORY	A	B	C	D
CIRCLING	2240-1 376 (400-1)	2320-1¼ 456 (500-1¼)	2620-2¼ 756 (800-2¼)	NA

REIL Rwy's 17 and 35  
MIRL Rwy 17-35

RUSSELL, KANSAS  
Amdt 5B 04NOV21

38°52'N-98°49'W

RUSSELL MUNI (RSL)  
**VOR/DME-A**

NC-2 30 OCT 2025 to 27 NOV 2025

NC-2 30 OCT 2025 to 27 NOV 2025

RUSSELL, KANSAS

AL-856 (FAA)

25331

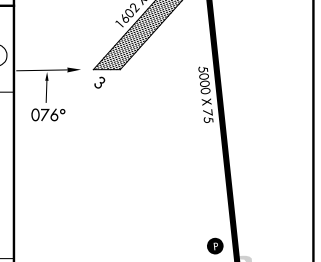
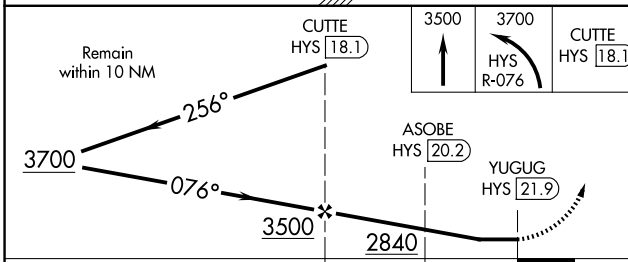
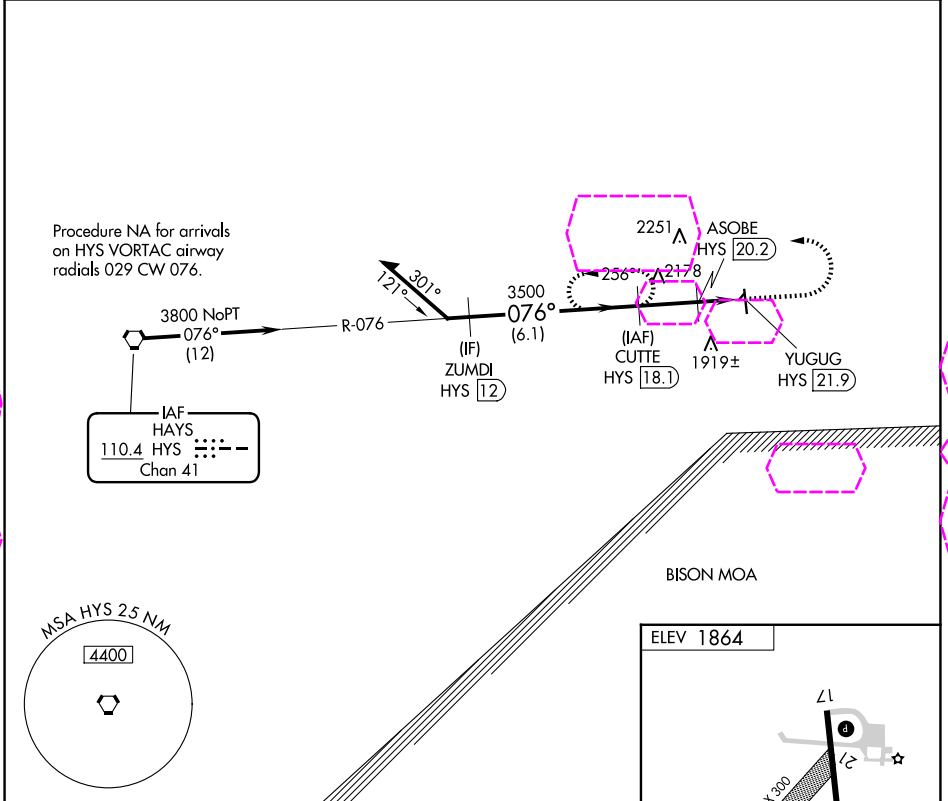
VORTAC HYS <b>110.4</b> Chan <b>41</b>	APP CRS <b>076°</b>	Rwy Ldg TDZE Apt Elev <b>N/A</b> <b>N/A</b> <b>1864</b>
--	------------------------	--

**VOR/DME-A**  
RUSSELL MUNI (RSL)

When local altimeter setting not received, use Hays altimeter setting; increase all MDA 80 feet and Cat C visibility ¼ SM. Circling NA to Rwys 3 and 21.

MISSED APPROACH: Climb to 3500 then climbing left turn to 3700 via HYS R-076 to CUTTE/18.1 DME and hold.

ASOS <b>128.325</b>	KANSAS CITY CENTER <b>124.4 322.4</b>	UNICOM <b>122.7 (CTAF)</b>
------------------------	--	-------------------------------



CATEGORY	A	B	C	D
CIRCLING	2240-1 376 (400-1)	2320-1¼ 456 (500-1¼)	2620-2¼ 756 (800-2¼)	NA

REIL Rwys 17 and 35  
MIRL Rwy 17-35

RUSSELL, KANSAS  
Amdt 5B 04NOV21

38°52'N-98°49'W

**RUSSELL MUNI (RSL)**  
**VOR/DME-A**

NC-2, 27 NOV 2025 to 25 DEC 2025

NC-2, 27 NOV 2025 to 25 DEC 2025