

RUSSELL, KANSAS

AL-856 (FAA)

25163

WAAS CH 93904 W17A	APP CRS 167°	Rwy Ldg TDZE Apt Elev	5000 1864 1864
--	------------------------	-----------------------------	---

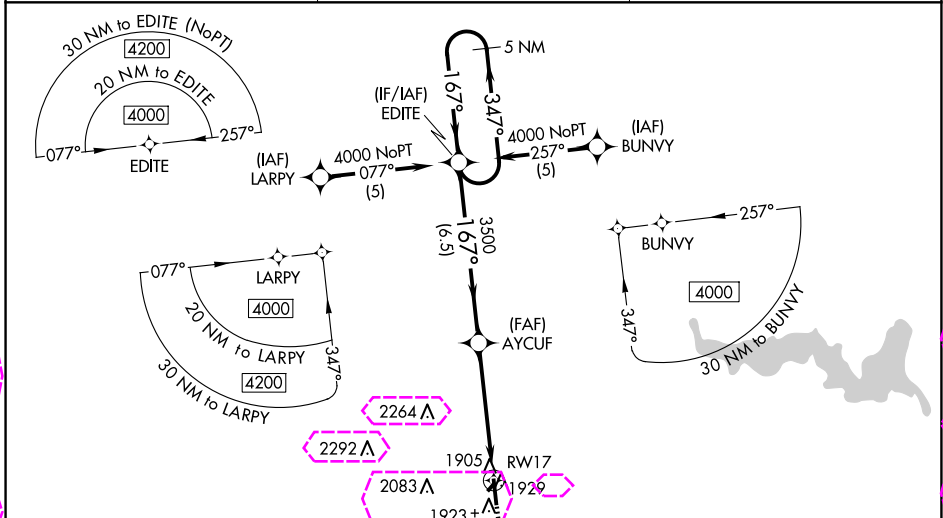
RNAV (GPS) RWY 17

RUSSELL MUNI (RSL)

⚠ Baro-VNAV and VDP NA when using Hays altimeter setting. For uncompensated Baro-VNAV systems, LNAV/VNAV NA below -18°C (0°F) or above 54°C (130°F). DME/DME RNP-0.3 NA. Helicopter visibility reduction below ¼ SM NA. When local altimeter setting not received, use Hays altimeter setting: increase LPV DA all Cats to 2186 feet, LNAV/VNAV all Cats DA to 2244 feet and all visibilities ¼ SM; increase all MDA 80 feet and LNAV Cat C and Circling Cat C visibility ¼ SM. Circling NA to Rwys 3 and 21.

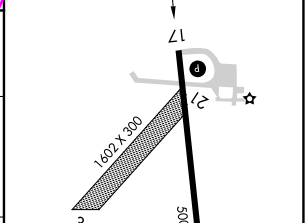
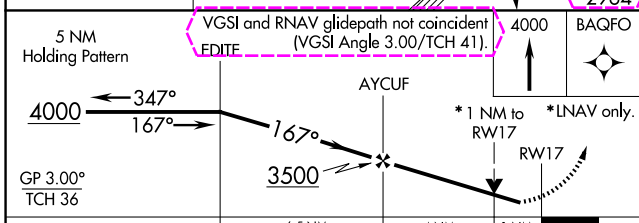
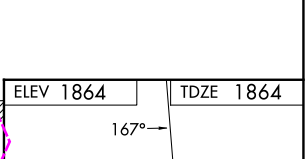
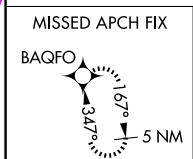
MISSED APPROACH:
Climb to 4000 direct
BAQFO and hold.

ASOS 128.325	KANSAS CITY CENTER 124.4 322.4	UNICOM 122.7 (CTAF) 0
------------------------	--	---------------------------------

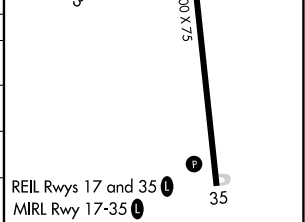


NC-2, 30 OCT 2025 to 27 NOV 2025

NC-2, 30 OCT 2025 to 27 NOV 2025



CATEGORY	A	B	C	D
LPV DA	2117-1	253 (300-1)		NA
LNAV/VNAV DA	2175-1½	311 (400-1½)		NA
LNAV MDA	2220-1	356 (400-1)		NA
CIRCLING	2240-1 376 (400-1)	2320-1 456 (500-1)	2620-2¼ 756 (800-2¼)	NA



RUSSELL, KANSAS
Orig-B 04NOV21

38°52'N-98°49'W

RUSSELL MUNI (RSL) RNAV (GPS) RWY 17

RUSSELL, KANSAS

AL-856 (FAA)

25331

WAAS CH 93904 W17A	APP CRS 167°	Rwy Ldg TDZE Apt Elev	5000 1864 1864
--	------------------------	-----------------------------	---

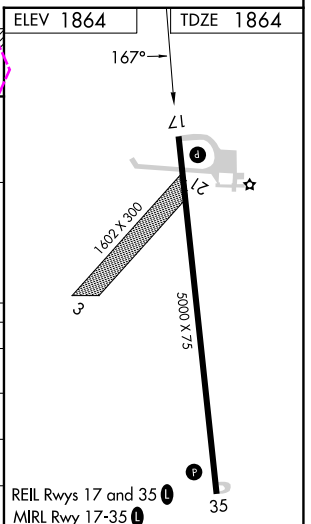
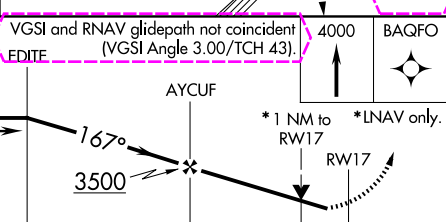
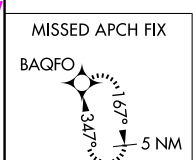
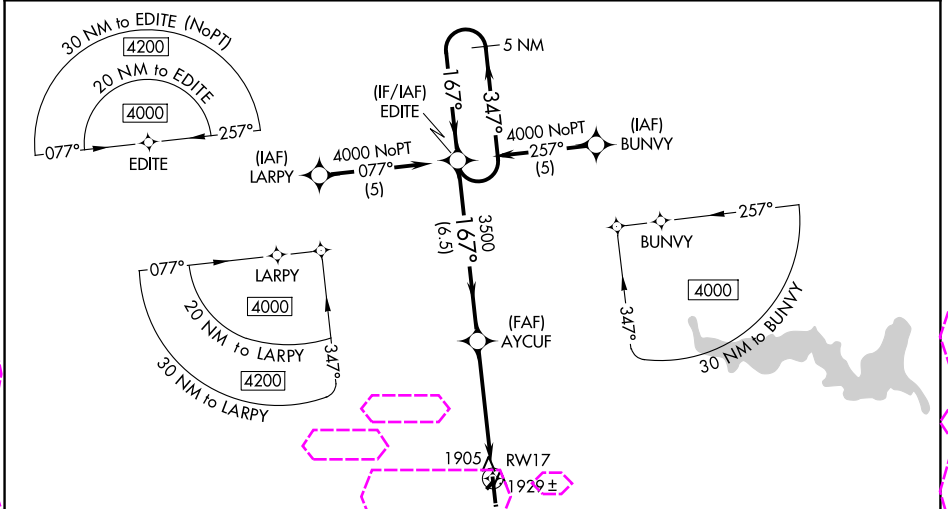
RNAV (GPS) RWY 17

RUSSELL MUNI (RSL)

⚠ Baro-VNAV and VDP NA when using Hays altimeter setting. For uncompensated Baro-VNAV systems, LNAV/VNAV NA below -18°C (0°F) or above 54°C (130°F). DME/DME RNP-0.3 NA. Helicopter visibility reduction below ¼ SM NA. When local altimeter setting not received, use Hays altimeter setting: increase LPV DA all Cats to 2186 feet, LNAV/VNAV all Cats DA to 2244 feet and all visibilities ¼ SM; increase all MDA 80 feet and LNAV Cat C and Circling Cat C visibility ¼ SM. Circling NA to Rwys 3 and 21.

MISSED APPROACH:
Climb to 4000 direct
BAQFO and hold.

ASOS 128.325	KANSAS CITY CENTER 124.4 322.4	UNICOM 122.7 (CTAF) 0
------------------------	--	---------------------------------



5 NM Holding Pattern	VGSi and RNAV glidepath not coincident (VGSi Angle 3.00/TCH 43).		4000	BAQFO
GP 3.00° TCH 36	AYCUF	* 1 NM to RWY 17	* LNAV only.	RWY 17
	6.5 NM	4 NM	1 NM	

CATEGORY	A	B	C	D
LPV DA	2117-1	253 (300-1)		NA
LNAV/VNAV DA	2175-1½	311 (400-1½)		NA
LNAV MDA	2220-1	356 (400-1)		NA
CIRCLING	2240-1 376 (400-1)	2320-1 456 (500-1)	2620-2¼ 756 (800-2¼)	NA

REIL Rwys 17 and 35
MIRL Rwy 17-35

RUSSELL, KANSAS
Orig-B 04NOV21

38°52'N-98°49'W

RNAV (GPS) RWY 17

NC-2, 27 NOV 2025 to 25 DEC 2025

NC-2, 27 NOV 2025 to 25 DEC 2025