

WAAS CH 78434 W12A	APP CRS 121°	Rwy Idg TDZE Apt Elev	3998 2209 2209
---------------------------------	------------------------	-----------------------------	---

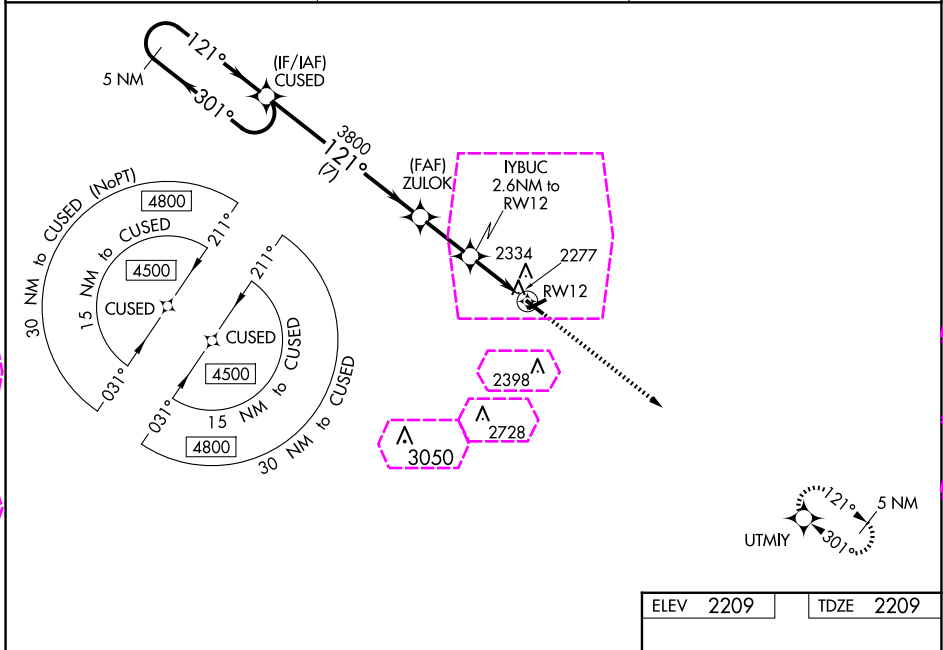
RNAV (GPS) RWY 12

PHILIP (PHP)

⚠ DME/DME RNP-0.3 NA. When local altimeter setting not received, use Pierre altimeter setting and increase all DA 204 feet and increase LPV and LNAV/VNAV all Cats visibility $\frac{3}{8}$ mile, increase LNAV Cat C visibility $\frac{1}{2}$ mile, and increase Circling Cat C visibility $\frac{3}{4}$ mile. Helicopter visibility reduction below 1 SM NA. Procedure NA at night. For uncompensated Baro-VNAV systems, LNAV/VNAV NA below -14°C (7°F) or above 54°C (130°F). Baro-VNAV NA when using Pierre altimeter setting.

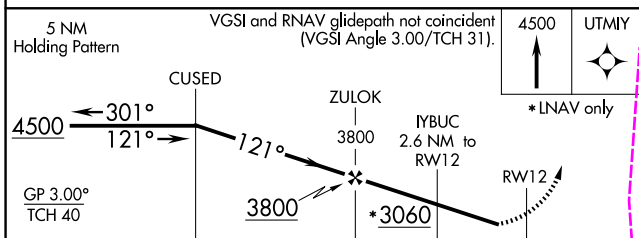
MISSED APPROACH: Climb to 4500 direct UTMZY and hold.

ASOS 118.375	DENVER CENTER 127.95 338.2	UNICOM 122.8 (CTAF) 📻
------------------------	--------------------------------------	--

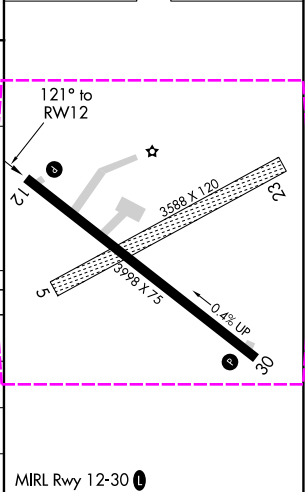


NC-1, 30 OCT 2025 to 27 NOV 2025

NC-1, 30 OCT 2025 to 27 NOV 2025



ELEV 2209	TDZE 2209
-----------	-----------



CATEGORY	A	B	C	D
LPV DA	2467-1 258 (300-1)			NA
LNAV/VNAV DA	2742-1 $\frac{7}{8}$ 533 (600-1 $\frac{7}{8}$)			NA
LNAV MDA	2680-1	471 (500-1)	2680-1 $\frac{3}{8}$ 471 (500-1 $\frac{3}{8}$)	NA
C CIRCLING	2720-1 511 (600-1)	2760-1 551 (600-1)	2840-1 $\frac{3}{4}$ 631 (700-1 $\frac{3}{4}$)	NA

PHILIP, SOUTH DAKOTA

AL-850 (FAA)

25331

WAAS CH 78434 W12A	APP CRS 121°	Rwy Ldg TDZE Apt Elev	3998 2209 2209
---------------------------------	------------------------	-----------------------------	---

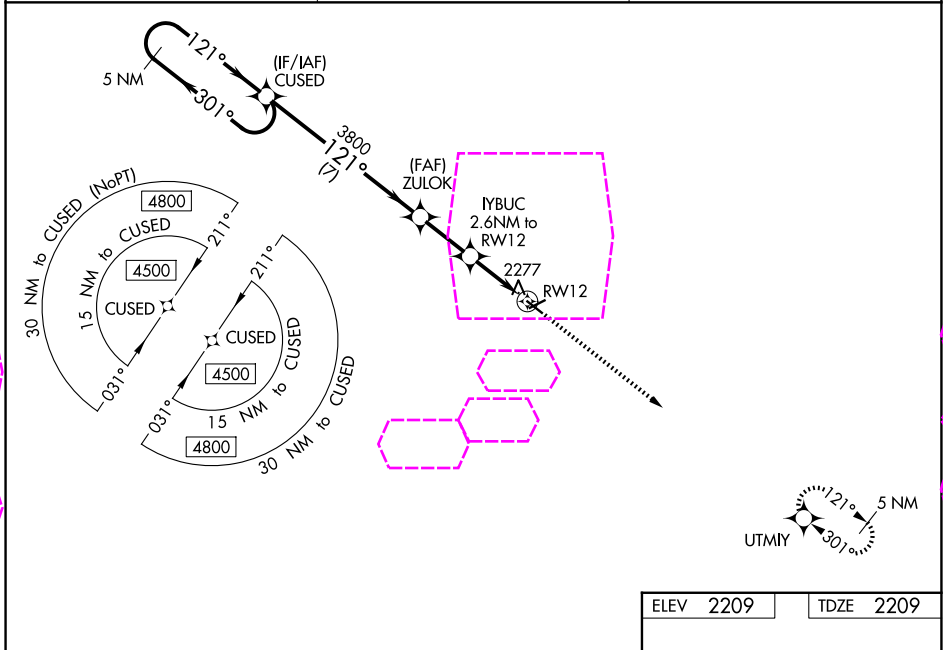
RNAV (GPS) RWY 12

PHILIP (PHP)

⚠ DME/DME RNP-0.3 NA. When local altimeter setting not received, use Pierre altimeter setting and increase all DA 204 feet and MDA 220 feet and increase LPV and LNAV/VNAV all Cats visibility $\frac{3}{8}$ mile, increase LNAV Cat C visibility $\frac{1}{2}$ mile, and increase Circling Cat C visibility $\frac{3}{4}$ mile. Helicopter visibility reduction below 1 SM NA. Procedure NA at night. For uncompensated Baro-VNAV systems, LNAV/VNAV NA below -14°C (7°F) or above 54°C (130°F). Baro-VNAV NA when using Pierre altimeter setting.

MISSED APPROACH: Climb to 4500 direct UTMZY and hold.

ASOS 118.375	DENVER CENTER 127.95 338.2	UNICOM 122.8 (CTAF)
------------------------	--------------------------------------	-------------------------------



NC-1, 27 NOV 2025 to 25 DEC 2025

NC-1, 27 NOV 2025 to 25 DEC 2025

5 NM Holding Pattern		VGSI and RNAV glidepath not coincident (VGSI Angle 3.00/TCH 31).		4500	UTMZY
CUSED		ZULOK	YBUC	*LNAV only	
4500 ← 301°		3800	2.6 NM to RW12	RW12	
GP 3.00° TCH 40		*3060			
7 NM		2.3 NM	2.6 NM		
CATEGORY	A	B	C	D	
LPV DA	2467-1 258 (300-1)			NA	
LNAV/VNAV DA	2742-1 $\frac{7}{8}$ 533 (600-1 $\frac{7}{8}$)			NA	
LNAV MDA	2680-1	471 (500-1)	2680-1 $\frac{3}{8}$ 471 (500-1 $\frac{3}{8}$)	NA	
CIRCLING	2720-1 511 (600-1)	2760-1 551 (600-1)	2840-1 $\frac{3}{4}$ 631 (700-1 $\frac{3}{4}$)	NA	

ELEV 2209 | TDZE 2209

MIRL Rwy 12-30

PHILIP, SOUTH DAKOTA
Orig-A 21AUG14

44°03'N-101°36'W

RNAV (GPS) RWY 12

PHILIP (PHP)