

PULLMAN/MOSCOW, WASHINGTON

AL-798 (FAA)

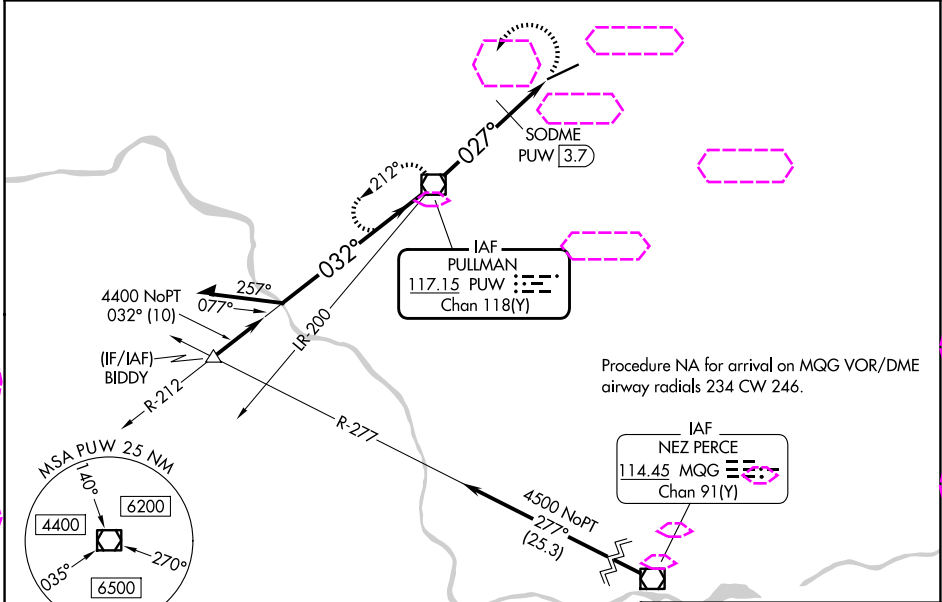
25331

VOR/DME P ^{UW} 117.15 Chan 118 (Y)	APP CRS 027°	Rwy Ldg TDZE Apt Elev	7100 2567 2567
---	------------------------	-----------------------------	---

VOR RWY 5
PULLMAN/MOSCOW RGNL (P^{UW})

DME required.	MALSR	MISSED APPROACH: Climbing left turn to 6000 direct P ^{UW} VOR/DME and hold, continue climb-in-hold to 6000.
<p>▼ Procedure NA at night.</p> <p>▲ Rwy 5 helicopter visibility reduction below 1 SM NA.</p> <p>Inop table does not apply to S-5 and SODME fix minimums Cats A/B.</p> <p>For inop ALS, increase S-5 SODME fix minimums Cat C/D visibility to 1 1/8 SM.</p>		

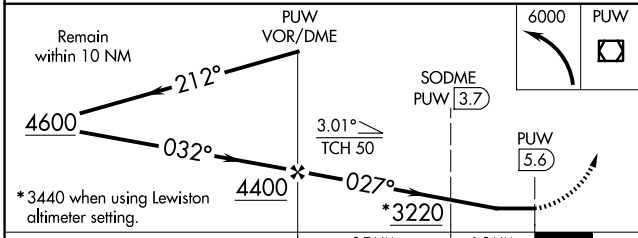
ASOS 135.675	SEATTLE CENTER 123.95 290.55	UNICOM 122.8 (CTAF) 0
------------------------	--	--



NW-1, 27 NOV 2025 to 25 DEC 2025

NW-1, 27 NOV 2025 to 25 DEC 2025

ELEV 2567	D	TDZE 2567
-----------	----------	-----------



CATEGORY	A	B	C	D
S-5	3220/50	653 (700-1)	3220-1 3/8	653 (700-1 1/8)
CIRCLING	3220-1	653 (700-1)	3220-1 7/8	3420-2 3/4 853 (900-2 3/4)
SODME FIX MINIMUMS				
S-5	3040/50 473 (500-1)			
CIRCLING	3080-1 513 (600-1)	3120-1 553 (600-1)	3140-1 1/2 573 (600-1 1/2)	3420-2 3/4 853 (900-2 3/4)

