

PULLMAN/MOSCOW, WASHINGTON

AL-798 (FAA)

24193

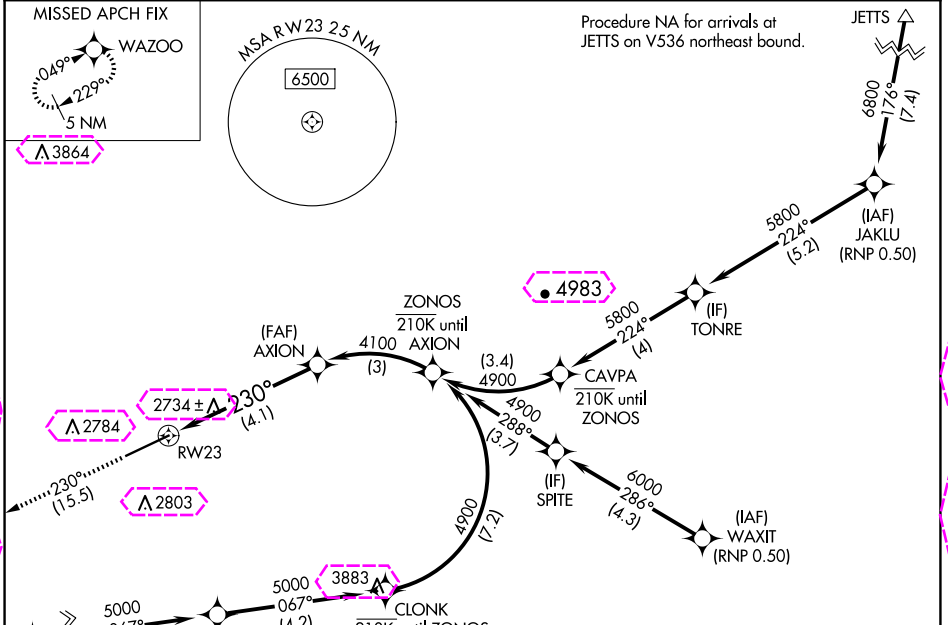
APP CRS <b>230°</b>	Rwy Idg <b>7100</b>
	TDZE <b>2552</b>
	Apt Elev <b>2567</b>

# RNAV (RNP) Z RWY 23

PULLMAN/MOSCOW RGNL (PUW)

RNP AR APCH. RF required.	MISSED APPROACH: Climb to 5000 on track 230° to WAZOO and hold.
<p>▼ For uncompensated Baro-VNAV systems, procedure NA below -20°C or above 50°C.</p> <p>▲ NA</p>	

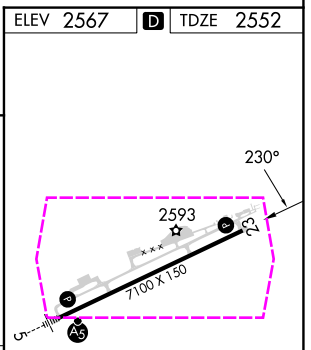
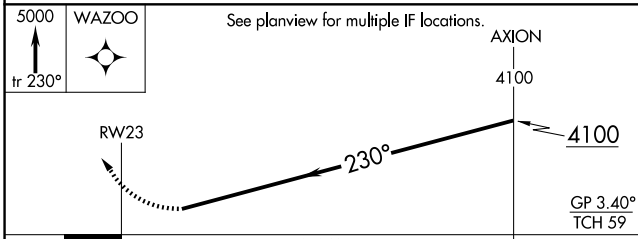
ASOS <b>135.675</b>	SEATTLE CENTER <b>123.95 290.55</b>	UNICOM <b>122.8 (CTAF) 0</b>
------------------------	--	---------------------------------



NW-1, [30 OCT 2025 to 27 NOV 2025]

NW-1, [30 OCT 2025 to 27 NOV 2025]

ELEV 2567	TDZE 2552
-----------	-----------



CATEGORY	A	B	C	D
RNP 0.22 DA		3041-1 <sup>3</sup> / <sub>8</sub>	489 (500-1 <sup>3</sup> / <sub>8</sub> )	
RNP 0.30 DA		3146-1 <sup>3</sup> / <sub>4</sub>	594 (600-1 <sup>3</sup> / <sub>4</sub> )	

**AUTHORIZATION REQUIRED**

REIL Rwy 23 0  
HIRL Rwy 5-23 0

PULLMAN/MOSCOW, WASHINGTON  
Orig 10OCT19

46°45'N-117°07'W

PULLMAN/MOSCOW RGNL (PUW)  
**RNAV (RNP) Z RWY 23**

PULLMAN/MOSCOW, WASHINGTON

AL-798 (FAA)

25331

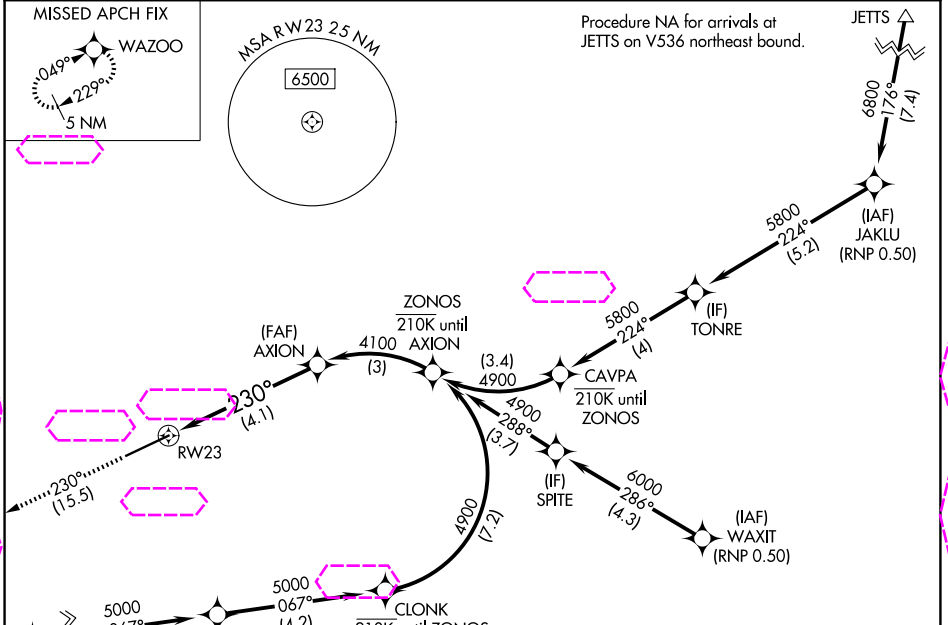
APP CRS <b>230°</b>	Rwy Ldg <b>7100</b>
	TDZE <b>2552</b>
	Apt Elev <b>2567</b>

# RNAV (RNP) Z RWY 23

PULLMAN/MOSCOW RGNL (PUW)

RNP AR APCH. RF required.	MISSED APPROACH: Climb to 5000 on track 230° to WAZOO and hold.
<p>▼ For uncompensated Baro-VNAV systems, procedure NA below -20°C or above 50°C.</p> <p>▲ NA</p>	

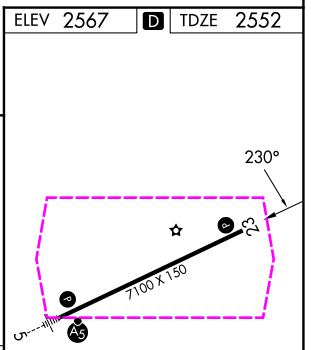
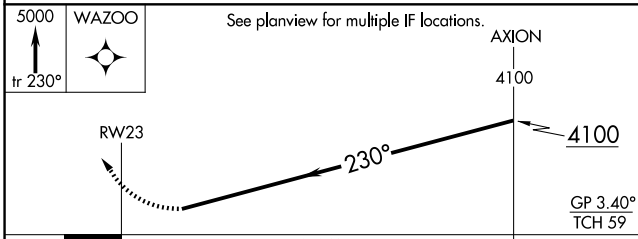
ASOS <b>135.675</b>	SEATTLE CENTER <b>123.95 290.55</b>	UNICOM <b>122.8 (CTAF) 0</b>
------------------------	--	---------------------------------



NW-1, 127 NOV 2025 to 25 DEC 2025

NW-1, 127 NOV 2025 to 25 DEC 2025

ELEV 2567	TDZE 2552
-----------	-----------



CATEGORY	A	B	C	D
RNP 0.22 DA		3041-1 <sup>3</sup> / <sub>8</sub>	489 (500-1 <sup>3</sup> / <sub>8</sub> )	
RNP 0.30 DA		3146-1 <sup>3</sup> / <sub>4</sub>	594 (600-1 <sup>3</sup> / <sub>4</sub> )	

**AUTHORIZATION REQUIRED**

REIL Rwy 23 0  
HIRL Rwy 5-23 0