

PULLMAN/MOSCOW, WASHINGTON

AL-798 (FAA)

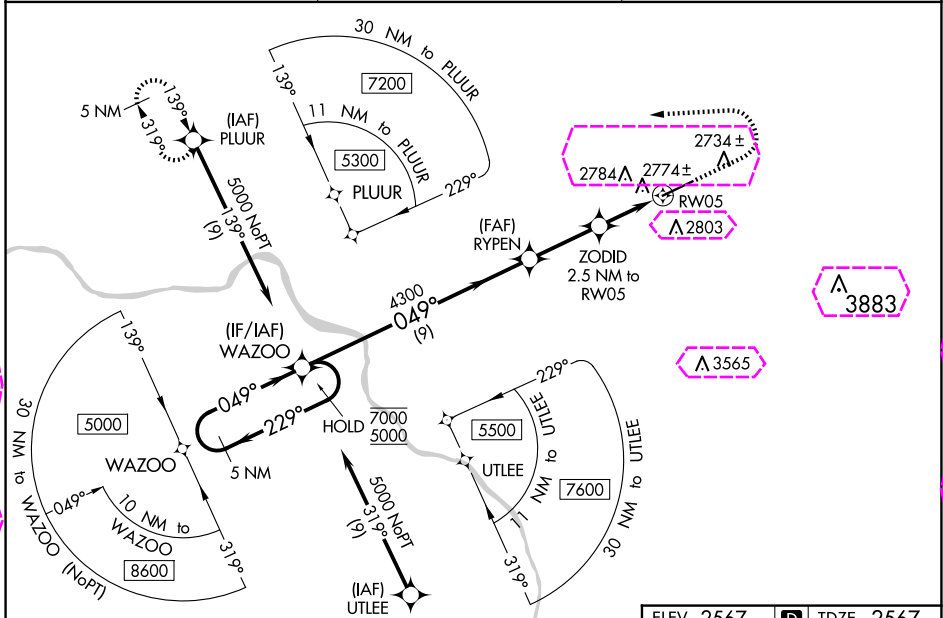
24193

WAAS CH <b>40243</b> <b>W05B</b>	APP CRS <b>049°</b>	Rwy Idg <b>7100</b> TDZE <b>2567</b> Apt Elev <b>2567</b>
--	------------------------	---

**RNAV (GPS) RWY 5**  
PULLMAN/MOSCOW RGNL (PUW)

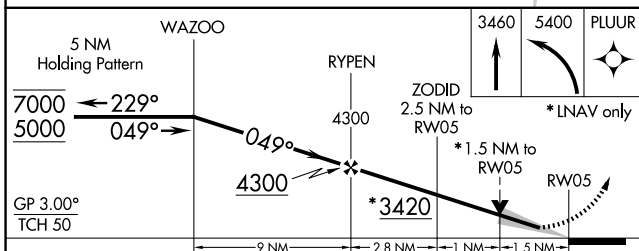
RNP APCH.	MALSR 	MISSED APPROACH: Climb to 3460 then climbing left turn to 5400 direct PLUUR and hold. # Missed approach requires minimum climb of 250 feet per NM to 4800.
<p><b>▼</b> For uncompensated Baro-VNAV systems, LNAV/VNAV NA below -20° C or above 54° C. For inop ALS, increase LPV all Cats visibility to RVR 4500 and LNAV Cat C/D visibility to 1 3/8 SM. <b>▲</b> † RVR 1800 authorized with use of FD or AP or HUD to DA.</p>		

ASOS <b>135.675</b>	SEATTLE CENTER <b>123.95 290.55</b>	UNICOM <b>122.8 (CTAF) 0</b>
------------------------	--	---------------------------------

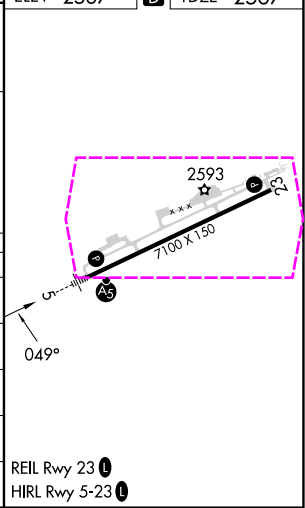


NW-1, 30 OCT 2025 to 27 NOV 2025

NW-1, 30 OCT 2025 to 27 NOV 2025



ELEV 2567	D	TDZE 2567
-----------	---	-----------



CATEGORY	A	B	C	D
LPV DA#†		2767/24	200 (200-1/2)	
LPV DA		2846/24	279 (300-1/2)	
LNAV/VNAV DA		3005/40	438 (500-3/4)	
LNAV MDA	3080/24	513 (600-1/2)	3080/55	513 (600-1)
<b>CIRCLING</b>	3080-1 513 (600-1)	3120-1 553 (600-1)	3140-1 1/2 573 (600-1 1/2)	3420-2 3/4 853 (900-2 3/4)

PULLMAN/MOSCOW, WASHINGTON  
Amdt 3A 30JAN20

46°45'N-117°07'W

PULLMAN/MOSCOW RGNL (PUW)  
**RNAV (GPS) RWY 5**

REIL Rwy 23 0  
HIRL Rwy 5-23 0

PULLMAN/MOSCOW, WASHINGTON

AL-798 (FAA)

25331

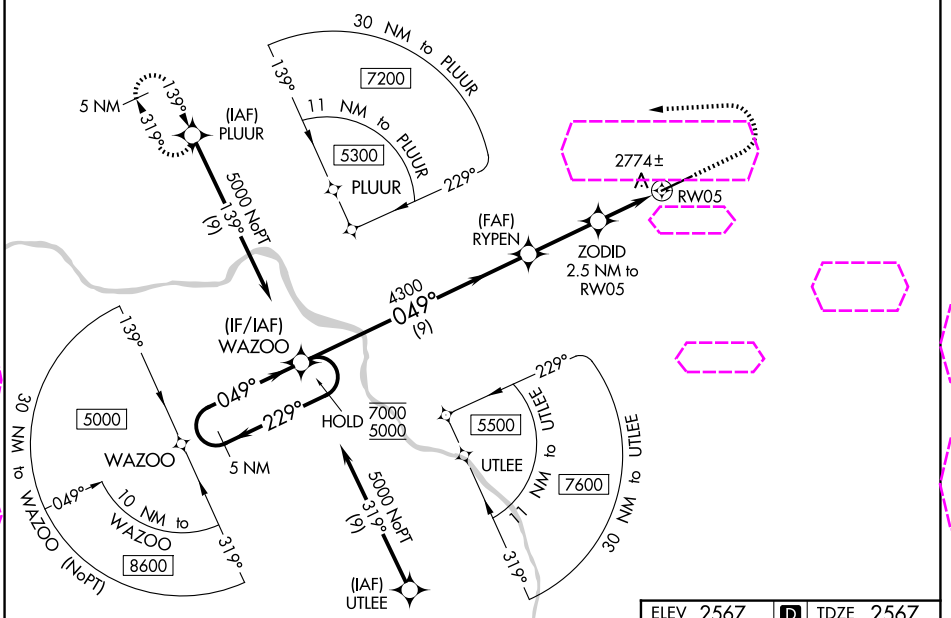
WAAS CH <b>40243</b> <b>W05B</b>	APP CRS <b>049°</b>	Rwy Ldg <b>7100</b> TDZE <b>2567</b> Apt Elev <b>2567</b>
--	------------------------	---

# RNAV (GPS) RWY 5

PULLMAN/MOSCOW RGNL (PUW)

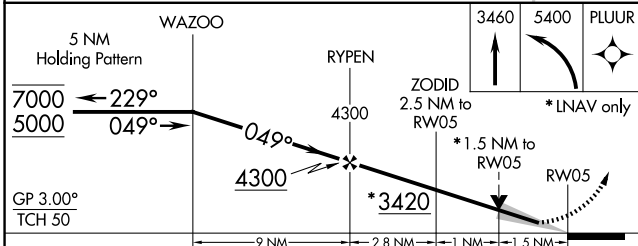
RNP APCH.	MALSR	MISSED APPROACH: Climb to 3460 then climbing left turn to 5400 direct PLUUR and hold. # Missed approach requires minimum climb of 250 feet per NM to 4800.
<p>▼ For uncompensated Baro-VNAV systems, LNAV/VNAV NA below -20° C or above 54° C. For inop ALS, increase LPV all Cats visibility to RVR 4500 and LNAV Cat C/D visibility to 1 3/8 SM. † RVR 1800 authorized with use of FD or AP or HUD to DA.</p>		

ASOS <b>135.675</b>	SEATTLE CENTER <b>123.95 290.55</b>	UNICOM <b>122.8 (CTAF) 0</b>
------------------------	--	---------------------------------



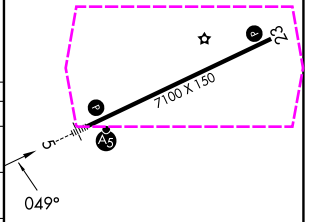
NW-1, 127 NOV 2025 to 25 DEC 2025

NW-1, 127 NOV 2025 to 25 DEC 2025



ELEV 2567	D	TDZE 2567
-----------	---	-----------

CATEGORY	A	B	C	D
LPV DA†		2767/24	200 (200-1/2)	
LPV DA		2846/24	279 (300-1/2)	
LNAV/VNAV DA		3005/40	438 (500-3/4)	
LNAV MDA	3080/24	513 (600-1/2)	3080/55	513 (600-1)
<b>CIRCLING</b>	3080-1 513 (600-1)	3120-1 553 (600-1)	3140-1 1/2 573 (600-1 1/2)	3420-2 3/4 853 (900-2 3/4)



PULLMAN/MOSCOW, WASHINGTON  
Amdt 3A 30JAN20

46°45'N-117°07'W

PULLMAN/MOSCOW RGNL (PUW)  
**RNAV (GPS) RWY 5**

REIL Rwy 23 0  
HIRL Rwy 5-23 0