

PULLMAN/MOSCOW, WASHINGTON

AL-798 (FAA)

24193

LOC/DME I-PUW <b>110.35</b> Chan 40(Y)	APP CRS <b>050°</b>	Rwy Idg TDZE Apt Elev	<b>7100</b> <b>2567</b> <b>2567</b>
--	------------------------	-----------------------------	---

# ILS or LOC RWY 5

PULLMAN/MOSCOW RGNL (PUW)

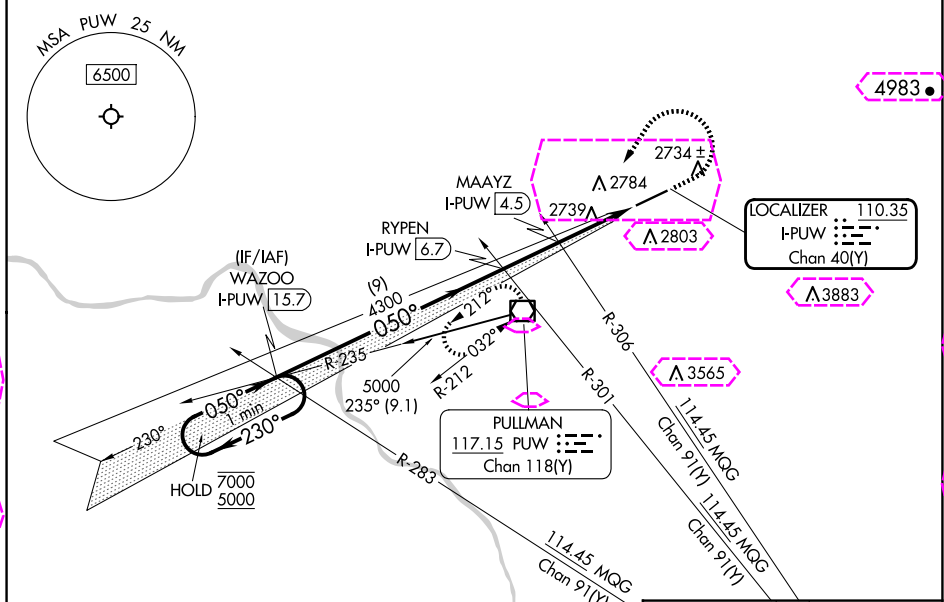
DME required.

**▼** For inop ALS, increase S-ILS 5 all Cats visibility to RVR 4500 and S-LOC 5 Cat C/D visibility to 1 1/2 SM.  
**▲** † RVR 1800 authorized with use of FD or AP or HUD to DA.

**MALSR**

**▲** MISSED APPROACH: Climb to 3460 then climbing left turn to 6000 direct PUW VOR/DME, continue climb-in-hold to 6000.  
 # Missed approach requires minimum climb of 222 feet per NM to 4180.

ASOS <b>135.675</b>	SEATTLE CENTER <b>123.95 290.55</b>	UNICOM <b>122.8 (CTAF) 0</b>
------------------------	--	---------------------------------

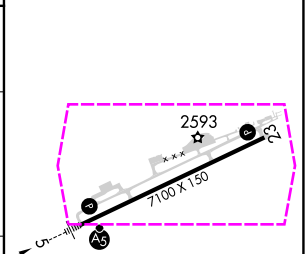
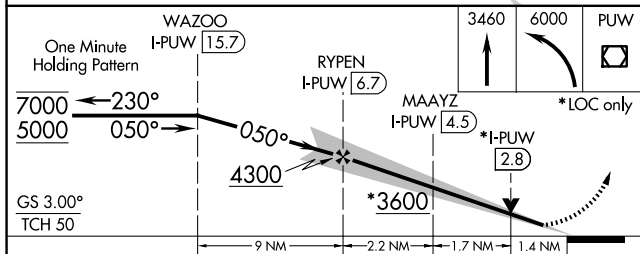


NW-1, 30 OCT 2025 to 27 NOV 2025

NW-1, 30 OCT 2025 to 27 NOV 2025

4983

ELEV 2567	<b>D</b> TDZE 2567
-----------	--------------------



CATEGORY	A	B	C	D
S-ILS 5 #†		2767/24	200 (200-1/2)	
S-ILS 5		2857/24	290 (300-1/2)	
S-LOC 5	3060/24	493 (500-1/2)	3060/50	493 (500-1)
<b>C</b> CIRCLING	3080-1 513 (600-1)	3120-1 553 (600-1)	3140-1 1/2 573 (600-1/2)	3420-2 3/4 853 (900-2 3/4)

REIL Rwy 23 0	
HIRL Rwy 5-23 0	
FAF to MAP 5.3 NM	
Knots	60 90 120 150 180
Min:Sec	5:18 3:32 2:39 2:07 1:46

PULLMAN/MOSCOW, WASHINGTON  
 Orig 10OCT19

46°45'N-117°07'W

# PULLMAN/MOSCOW RGNL (PUW) ILS or LOC RWY 5

PULLMAN/MOSCOW, WASHINGTON

AL-798 (FAA)

25331

LOC/DME I-PUW <b>110.35</b> Chan 40(Y)	APP CRS <b>050°</b>	Rwy Ldg TDZE Apt Elev	<b>7100</b> <b>2567</b> <b>2567</b>
--	------------------------	-----------------------------	---


# ILS or LOC RWY 5

PULLMAN/MOSCOW RGNL (PUW)

DME required.

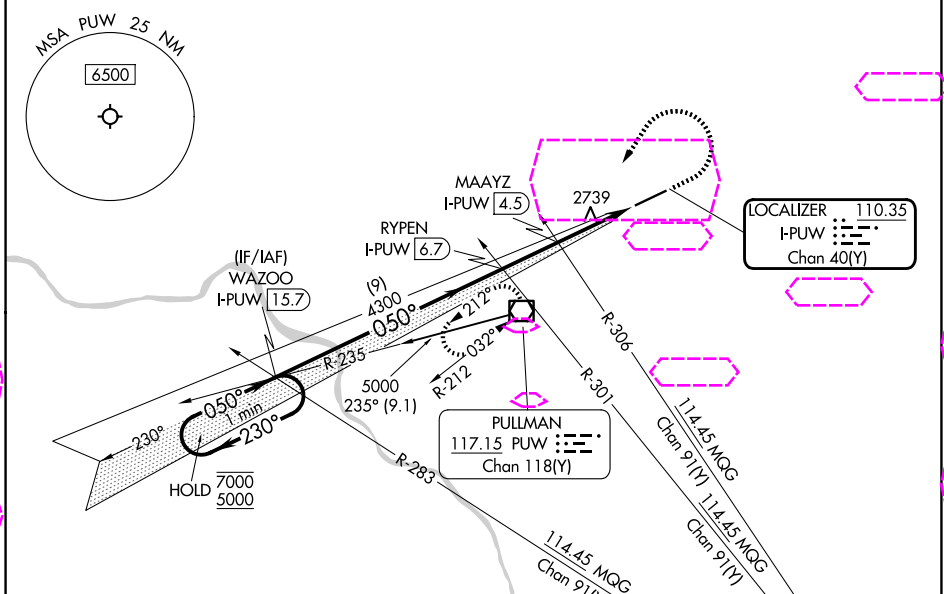
**▼** For inop ALS, increase S-ILS 5 all Cats visibility to RVR 4500 and S-LOC 5 Cat C/D visibility to 1 1/2 SM.  
**▲** † RVR 1800 authorized with use of FD or AP or HUD to DA.

**MALSR**



MISSED APPROACH: Climb to 3460 then climbing left turn to 6000 direct PUW VOR/DME, continue climb-in-hold to 6000.  
 # Missed approach requires minimum climb of 222 feet per NM to 4180.

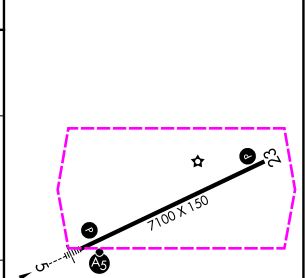
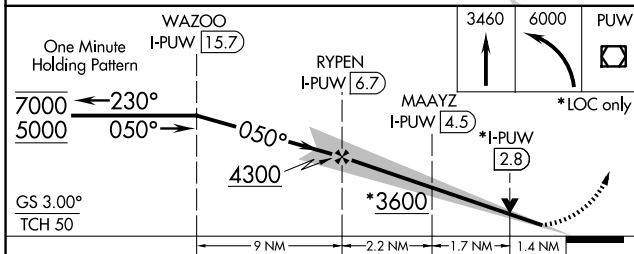
ASOS <b>135.675</b>	SEATTLE CENTER <b>123.95 290.55</b>	UNICOM <b>122.8 (CTAF) 0</b>
------------------------	--	---------------------------------



NW-1, 27 NOV 2025 to 25 DEC 2025

NW-1, 27 NOV 2025 to 25 DEC 2025

ELEV 2567	<b>D</b> TDZE 2567
-----------	--------------------



CATEGORY	A	B	C	D
S-ILS 5 #†		2767/24	200 (200-1/2)	
S-ILS 5		2857/24	290 (300-1/2)	
S-LOC 5	3060/24	493 (500-1/2)	3060/50	493 (500-1)
<b>CIRCLING</b>	3080-1 513 (600-1)	3120-1 553 (600-1)	3140-1 1/2 573 (600-1/2)	3420-2 3/4 853 (900-2 3/4)

REIL Rwy 23 0	HIRL Rwy 5-23 0
FAF to MAP 5.3 NM	
Knots	60 90 120 150 180
Min:Sec	5:18 3:32 2:39 2:07 1:46

PULLMAN/MOSCOW, WASHINGTON  
 Orig 10OCT19

46°45'N-117°07'W

PULLMAN/MOSCOW RGNL (PUW)  
**ILS or LOC RWY 5**