

(CAVVS4 CAVVS) 22083

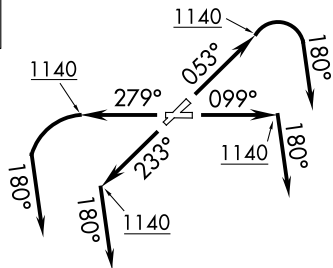
AL-753 (FAA)

LAKE COUNTY EXEC (LNN)
WILLOUGHBY, OHIO

CAVVS FOUR DEPARTURE (RNAV)

AWOS-3PT 119.225
CTAF 122.725
CLEVELAND DEP CON
125.35 346.325

**TOP ALTITUDE:
ASSIGNED BY ATC**



NOTE: RADAR required.
NOTE: RNAV 1.
NOTE: DME/DME/IRU or GPS required.

TAKEOFF MINIMUMS:
Rwys 5, 10, 23, 28: Standard with a minimum climb
of 500' per NM to 1140.

DEPARTURE ROUTE DESCRIPTION

TAKEOFF RUNWAY 5: Climb on heading 053° to 1140, then right turn heading 180° or as assigned by ATC for RADAR vectors to cross LBRON at or above 10000, thence....

TAKEOFF RUNWAY 10: Climb on heading 099° to 1140, then on heading 180° or as assigned by ATC for RADAR vectors to cross LBRON at or above 10000, thence....

TAKEOFF RUNWAY 23: Climb on heading 233° to 1140, then on heading 180° or as assigned by ATC for RADAR vectors to cross LBRON at or above 10000, thence....

TAKEOFF RUNWAY 28: Climb on heading 279° to 1140, then left turn heading 180° or as assigned by ATC for RADAR vectors to cross LBRON at or above 10000, thence....

on track 213° to CAVVS, then on (transition)

Maintain altitude assigned by ATC, expect filed altitude ten minutes after departure.

APPLETON TRANSITION (CAVVS4 APE)

NOTE: Chart not to scale.

EC-2, 30 OCT 2025 to 27 NOV 2025

EC-2, 30 OCT 2025 to 27 NOV 2025

CAVVS FOUR DEPARTURE (RNAV)

(CAVVS4 CAVVS) 26MAR20

WILLOUGHBY, OHIO
LAKE COUNTY EXEC (LNN)

(CAVVS5 CAVVS) 25331

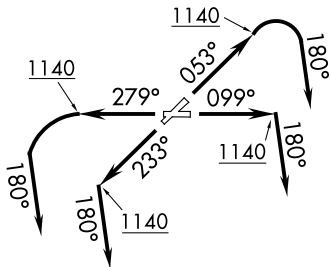
AL-753 (FAA)

LAKE COUNTY EXEC (LNN)
WILLOUGHBY, OHIO

CAVVS FIVE DEPARTURE (RNAV)

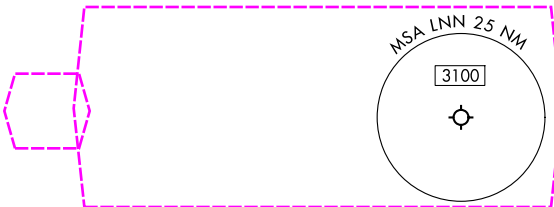
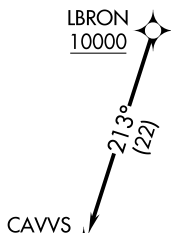
CLEVELAND DEP CON
125.35 346.325
AWOS-3PT 119.225
CTAF 122.725

**TOP ALTITUDE:
ASSIGNED BY ATC**



RNAV 1 - DME/DME/IRU or GPS.
RADAR required.

EC-2, 27 NOV 2025 to 25 DEC 2025



TAKEOFF MINIMUMS:
Rwys 5, 10, 23, 28: Standard with minimum climb
of 500' per NM to 1140.

EC-2, 27 NOV 2025 to 25 DEC 2025

DEPARTURE ROUTE DESCRIPTION

TAKEOFF RUNWAY 5: Climb on heading 053° to 1140, then right turn heading 180° or as assigned by ATC for RADAR vectors to cross LBRON at or above 10000, thence....

TAKEOFF RUNWAY 10: Climb on heading 099° to 1140, then on heading 180° or as assigned by ATC for RADAR vectors to cross LBRON at or above 10000, thence....

TAKEOFF RUNWAY 23: Climb on heading 233° to 1140, then on heading 180° or as assigned by ATC for RADAR vectors to cross LBRON at or above 10000, thence....

TAKEOFF RUNWAY 28: Climb on heading 279° to 1140, then left turn heading 180° or as assigned by ATC for RADAR vectors to cross LBRON at or above 10000, thence....

on track 213° to CAVVS, then on (transition)
Maintain ATC assigned altitude, expect filed altitude ten minutes after departure.

APPLETON TRANSITION (CAVVS5 APE)

NOTE: Chart not to scale.

CAVVS FIVE DEPARTURE (RNAV)

(CAVVS5 CAVVS) 27NOV25

WILLOUGHBY, OHIO
LAKE COUNTY EXEC (LNN)