

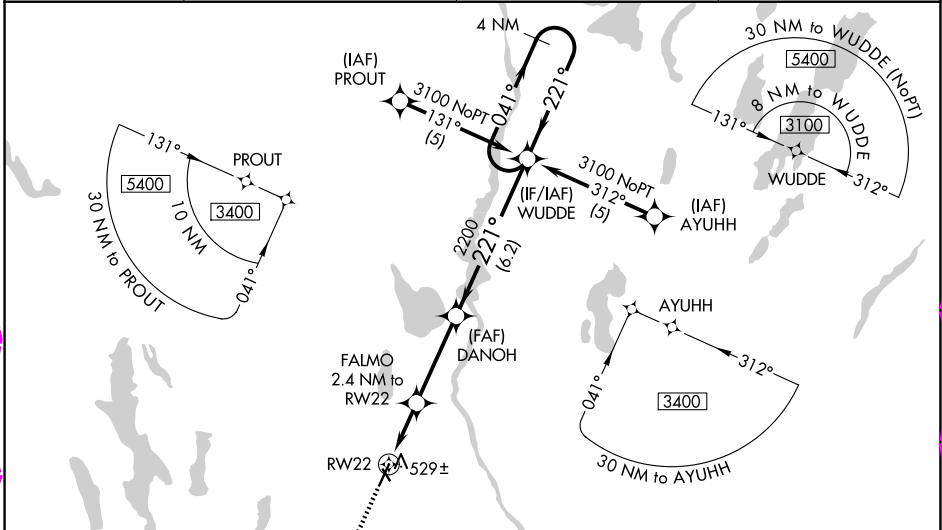
WAAS CH 78019 W22A	APP CRS 221°	Rwy Ldg TDZE Apt Elev	5001 270 288
--	------------------------	-----------------------------	---

RNAV (GPS) RWY 22

AUBURN/LEWISTON MUNI (LEW)

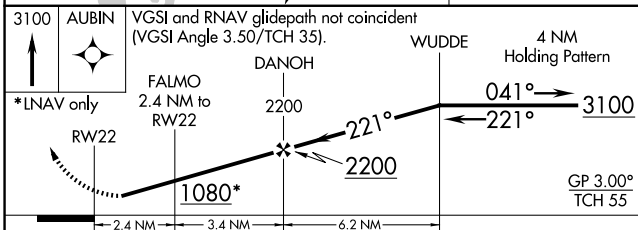
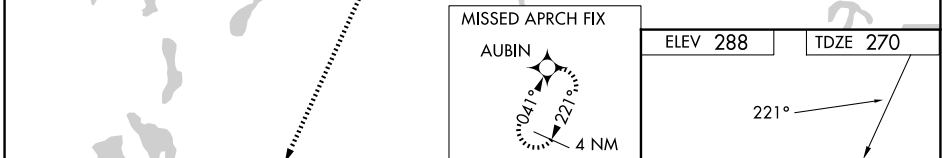
RNP APCH.	<p>▽ Procedure NA at night. For uncompensated Baro-VNAV systems, LNAV/VNAV NA below -15°C or above 48°C. Rwy 22 helicopter visibility reduction below 1 SM NA. When local altimeter setting not received, use Augusta altimeter setting: increase LPV all Cats DA to 617 feet and all Cats visibility ½ SM; LNAV/VNAV all Cats DA to 938 feet and all Cats visibility ½ SM; increase all MDA 80 feet and LNAV Cat C/D visibility ⅓ SM. Baro-VNAV NA when using Augusta altimeter setting.</p>

AWOS-3PT 118.025	PORTLAND APP CON ★ 125.5 353.9	CLNC DEL 124.05	UNICOM 122.8 (CTAF) 0
----------------------------	--	---------------------------	---------------------------------

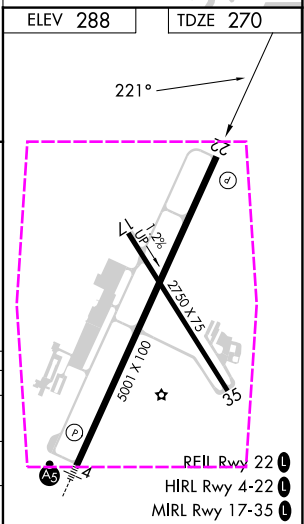


NE-1, 30 OCT 2025 to 27 NOV 2025

NE-1, 30 OCT 2025 to 27 NOV 2025



CATEGORY	A	B	C	D
LPV DA		546-1	276 (300-1)	
LNAV/VNAV DA		867-2	597 (600-2)	
LNAV MDA	780-1	510 (500-1)	780-1 ⅓	510 (500-1 ⅓)



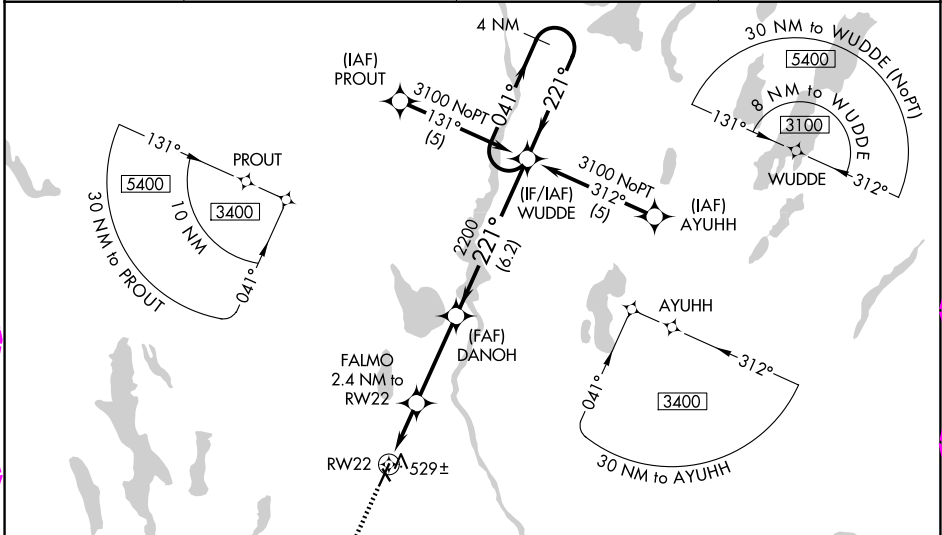
WAAS CH 78019 W22A	APP CRS 221°	Rwy Ldg TDZE Apt Elev	5001 270 288
--	------------------------	-----------------------------	---

RNAV (GPS) RWY 22

AUBURN/LEWISTON MUNI (LEW)

RNP APCH.	<p>⚠ Procedure NA at night. For uncompensated Baro-VNAV systems, LNAV/VNAV NA below -15°C or above 48°C. Rwy 22 helicopter visibility reduction below 1 SM NA. When local altimeter setting not received, use Augusta altimeter setting: increase LPV all Cats DA to 617 feet and all Cats visibility ½ SM; LNAV/VNAV all Cats DA to 938 feet and all Cats visibility ½ SM; increase all MDA 80 feet and LNAV Cat C/D visibility ½ SM. Baro-VNAV NA when using Augusta altimeter setting.</p>
MISSED APPROACH: Climb to 3100 direct AUBIN and hold.	

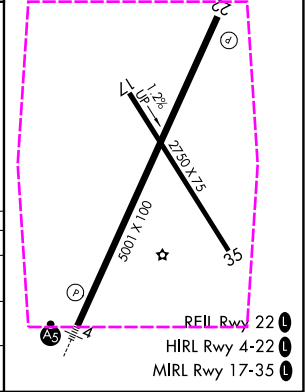
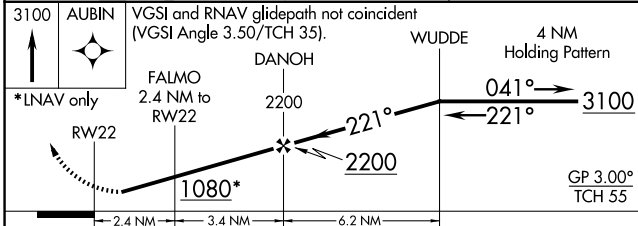
AWOS-3PT 118.025	PORTLAND APP CON ★ 125.5 353.9	CLNC DEL 124.05	UNICOM 122.8 (CTAF) 0
----------------------------	--	---------------------------	---------------------------------



NE-1, 27 NOV 2025 to 25 DEC 2025

NE-1, 27 NOV 2025 to 25 DEC 2025

ELEV 288	TDZE 270
<p>MISSED APRCH FIX AUBIN</p>	



CATEGORY	A	B	C	D
LPV DA		546-1	276 (300-1)	
LNAV/VNAV DA		867-2	597 (600-2)	
LNAV MDA	780-1	510 (500-1)	780-1 3/8	510 (500-1 3/8)