

AUBURN/LEWISTON, MAINE

AL-750 (FAA)

25275

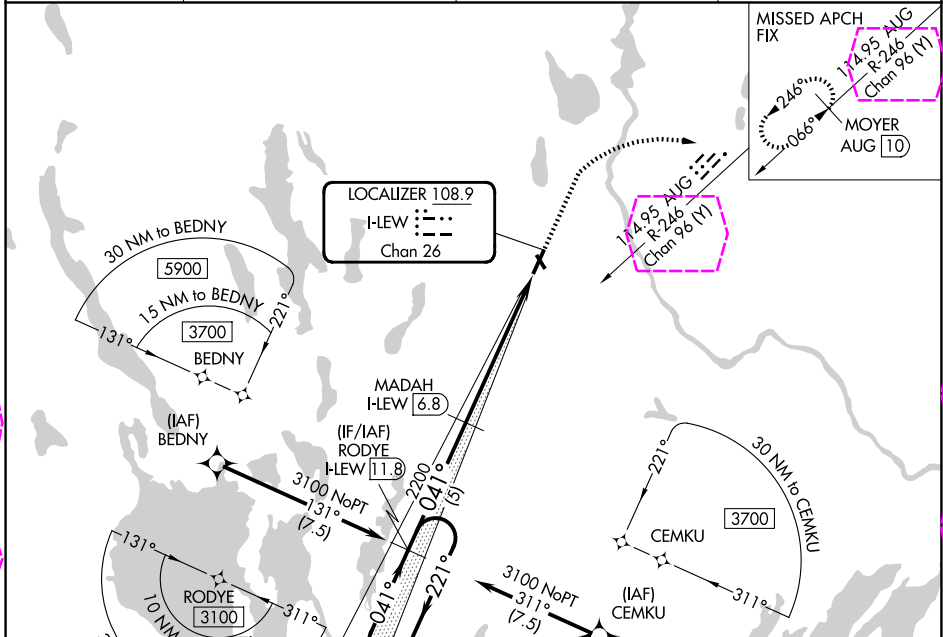
LOC/DME I-LEW <b>108.9</b> Chan <b>26</b>	APP CRS <b>041°</b>	Rwy Ldg TDZE Apr Elev <b>5001</b> <b>270</b> <b>288</b>
---	------------------------	--

# ILS or LOC RWY 4

AUBURN/LEWISTON MUNI (LEW)

DME required. RNP APCH - GPS.	MALSR 	MISSED APPROACH: Climb to 900 then climbing right turn to 3000 on heading 080° and on AUG VOR/DME R-246 to MOYER/AUG 10 DME and hold.
Circling to Rwy 17, 22, 35 NA at night. For inop ALS, increase S-LOC 4 Cat A visibility to 1 SM, and Cat C/D to 2½ SM.		

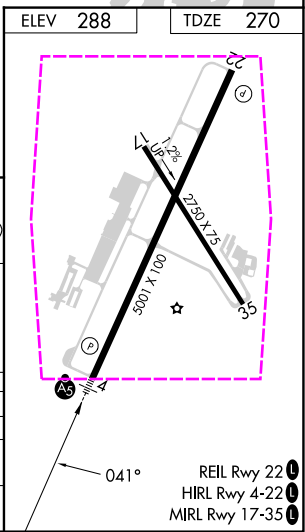
AWOS-3PT <b>118.025</b>	PORTLAND APP CON ★ <b>125.5 353.9</b>	CLNC DEL <b>124.05</b>	UNICOM <b>122.8</b> (CTAF)
----------------------------	--	---------------------------	-------------------------------



NE-1, 30 OCT 2025 to 27 NOV 2025

NE-1, 30 OCT 2025 to 27 NOV 2025

	ELEV 288	TDZE 270		
<b>4 NM Holding Pattern</b>	4700 ← 221° 3100 ← 041°	2200 → 041°		
<b>GS 3.00° TCH 50</b>	5 NM	3.7 NM		
<b>CATEGORY</b>	A	B	C	D
<b>S-ILS 4</b>		470-½	200 (200-½)	
<b>S-LOC 4</b>	1040-½ 770 (800-½)	1040-¾ 770 (800-¾)	1040-1¾ 770 (800-1¾)	
<b>CIRCLING</b>	1040-1 752 (800-1)	1040-1¼ 752 (800-1¼)	1060-2½ 772 (800-2½)	1120-2¾ 832 (900-2¾)



AUBURN/LEWISTON, MAINE  
Amdt 12 03NOV22

44°03'N-70°17'W

AUBURN/LEWISTON MUNI (LEW)  
**ILS or LOC RWY 4**

AUBURN/LEWISTON, MAINE

AL-750 (FAA)

25331

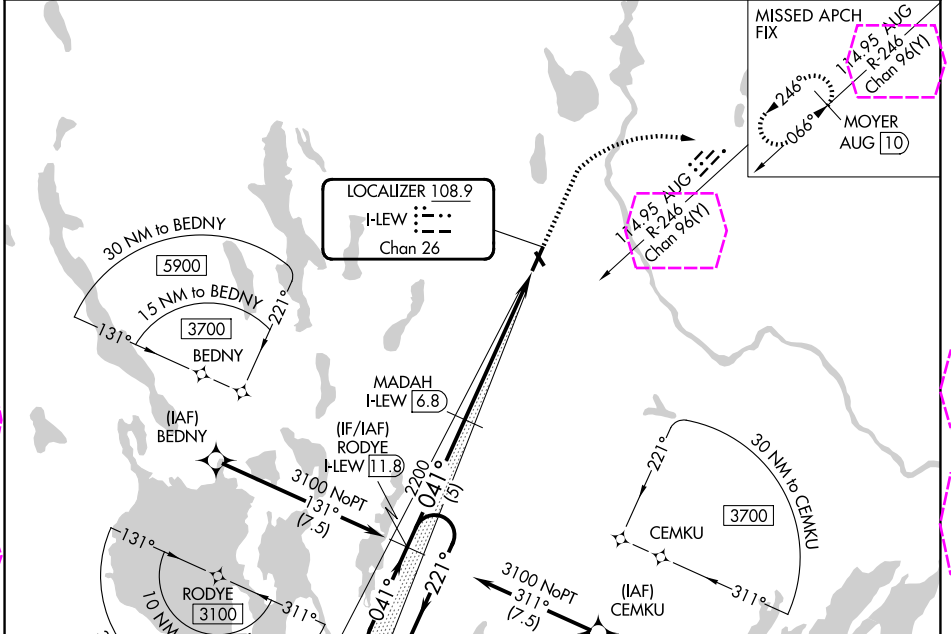
LOC/DME I-LEW <b>108.9</b> Chan <b>26</b>	APP CRS <b>041°</b>	Rwy Ldg TDZE Apr Elev <b>5001</b> <b>270</b> <b>288</b>
---	------------------------	--

# ILS or LOC RWY 4

AUBURN/LEWISTON MUNI (LEW)

DME required. RNP APCH - GPS.	MALS R	MISSED APPROACH: Climb to 900 then climbing right turn to 3000 on heading 080° and on AUG VOR/DME R-246 to MOYER/AUG 10 DME and hold.
<p>▼ Circling to Rwy 17, 22, 35 NA at night. For inop ALS, increase S-LOC 4 Cat A visibility to 1 SM, and Cat C/D to 2½ SM.</p> <p>▲</p>		

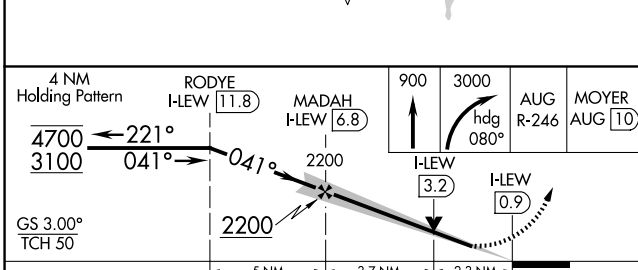
AWOS-3PT <b>118.025</b>	PORTLAND APP CON ★ <b>125.5 353.9</b>	CLNC DEL <b>124.05</b>	UNICOM <b>122.8 (CTAF) 0</b>
----------------------------	--	---------------------------	---------------------------------



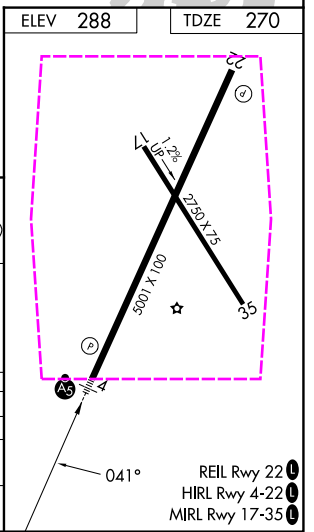
NE-1, 27 NOV 2025 to 25 DEC 2025

NE-1, 27 NOV 2025 to 25 DEC 2025

ELEV 288	TDZE 270
----------	----------



CATEGORY	A	B	C	D
S-ILS 4		470-½	200 (200-½)	
S-LOC 4	1040-½ 770 (800-½)	1040-¾ 770 (800-¾)	1040-1¾ 770 (800-1¾)	770 (800-1¾)
CIRCLING	1040-1 752 (800-1)	1040-1¼ 752 (800-1¼)	1060-2½ 772 (800-2½)	1120-2¾ 832 (900-2¾)



AUBURN/LEWISTON, MAINE  
Amdt 12 03NOV22

44°03'N-70°17'W

AUBURN/LEWISTON MUNI (LEW)  
ILS or LOC RWY 4