

JAMESTOWN, NEW YORK

AL-731 (FAA)

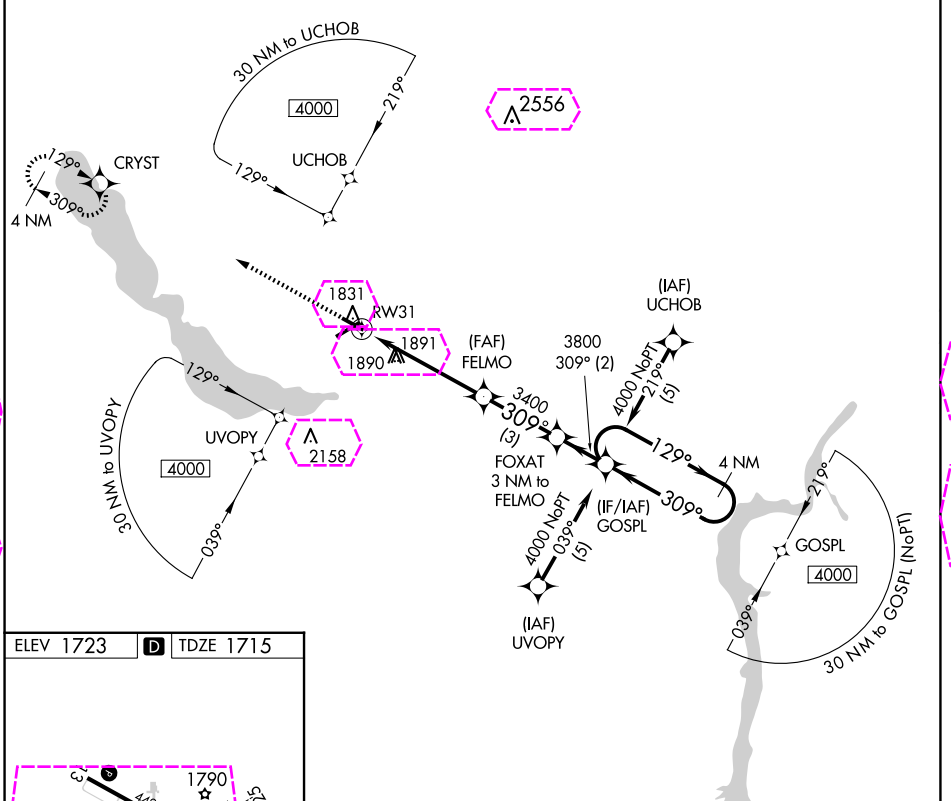
23278

APP CRS 309°	Rwy Idg 4499	4499
	TDZE 1715	1715
	Apt Elev 1723	1723

RNAV (GPS) RWY 31

CHAUTAUQUA COUNTY/JAMESTOWN (JHW)

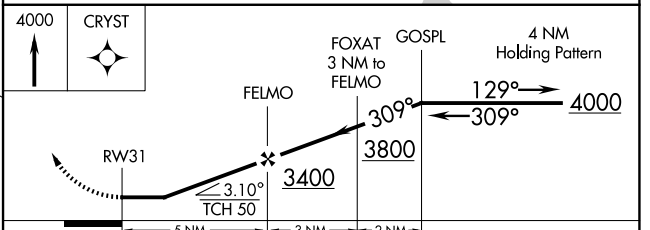
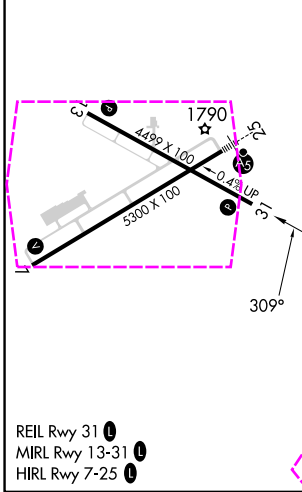
RNP APCH-GPS		MISSED APPROACH: Climb to 4000 direct CRYST WP and hold.
Rwy 31 Straight-in/Circling and Circling to Rwy 13 NA at night. When local altimeter setting not received, use Dunkirk altimeter setting; increase all MDAs 200 feet and visibility LNAV Cats C/D ½ SM, Circling Cat C ½ SM and Circling Cat D ½ SM. Helicopter visibility reduction below 1 SM NA.		
AWOS-3PT 118.425	BUFFALO APP CON * 126.05	UNICOM 122.975 (CTAF) 0



NE-2, 30 OCT 2025 to 27 NOV 2025

NE-2, 30 OCT 2025 to 27 NOV 2025

ELEV 1723	D	TDZE 1715
-----------	----------	-----------



CATEGORY	A	B	C	D
LNAV MDA	2200-1	485 (500-1)	2200-1¼ 485 (500-1¼)	2200-1½ 485 (500-1½)
CIRCLING	2200-1	477 (500-1)	2260-1½ 537 (600-1½)	2340-2 617 (700-2)

JAMESTOWN, NEW YORK
Orig-C 14JUL22

CHAUTAUQUA COUNTY/JAMESTOWN (JHW)
42°09'N-79°15'W
RNAV (GPS) RWY 31

JAMESTOWN, NEW YORK

AL-731 (FAA)

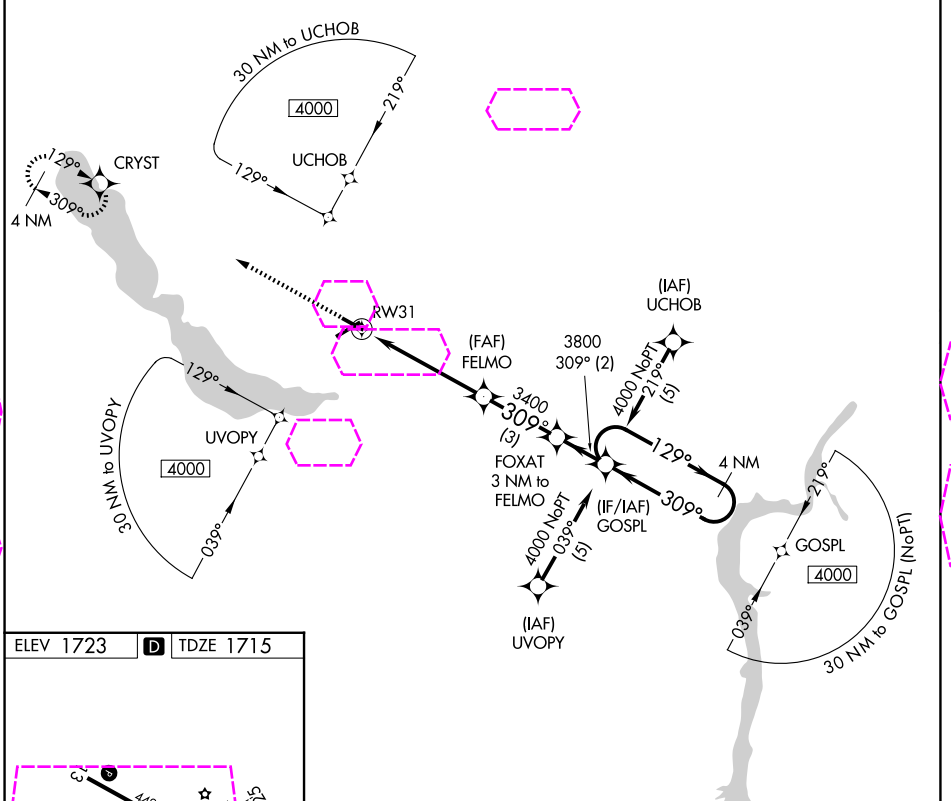
25331

APP CRS 309°	Rwy Ldg 4499
	TDZE 1715
	Apt Elev 1723

RNAV (GPS) RWY 31

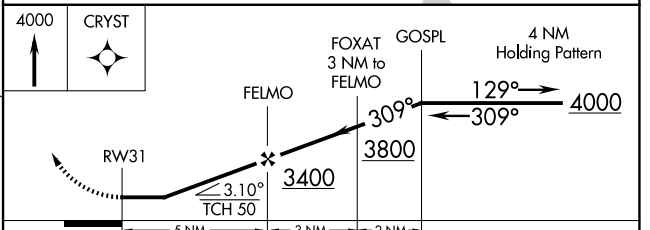
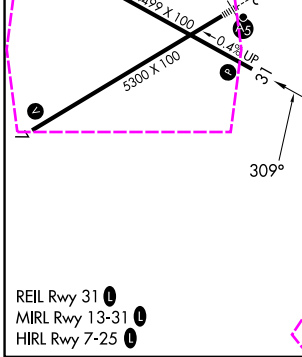
CHAUTAUQUA COUNTY/JAMESTOWN (JHW)

RNP APCH-GPS		MISSED APPROACH: Climb to 4000 direct CRYST WP and hold.
<p>▼ Rwy 31 Straight-in/Circling and Circling to Rwy 13 NA at night. When local altimeter setting not received, use Dunkirk altimeter setting; increase all MDAs 200 feet and visibility LNAV Cats C/D ½ SM, Circling Cat C ½ SM and Circling Cat D ½ SM. Helicopter visibility reduction below 1 SM NA.</p>		
AWOS-3PT 118.425	BUFFALO APP CON * 126.05	UNICOM 122.975 (CTAF) 0



NE-2, 27 NOV 2025 to 25 DEC 2025

NE-2, 27 NOV 2025 to 25 DEC 2025



CATEGORY	A	B	C	D
LNAV MDA	2200-1	485 (500-1)	2200-1½ 485 (500-1¼)	2200-1½ 485 (500-1½)
CIRCLING	2200-1	477 (500-1)	2260-1½ 537 (600-1½)	2340-2 617 (700-2)

JAMESTOWN, NEW YORK
Orig-C 14JUL22

CHAUTAUQUA COUNTY/JAMESTOWN (JHW)
42°09'N-79°15'W
RNAV (GPS) RWY 31