

JAMESTOWN, NEW YORK

AL-731 (FAA)

23278

LOC/DME I-JHW <b>109.7</b> Chan <b>34</b>	APP CRS <b>249°</b>	Rwy Idg <b>5300</b> TDZE <b>1721</b> Apt Elev <b>1723</b>
---	------------------------	---

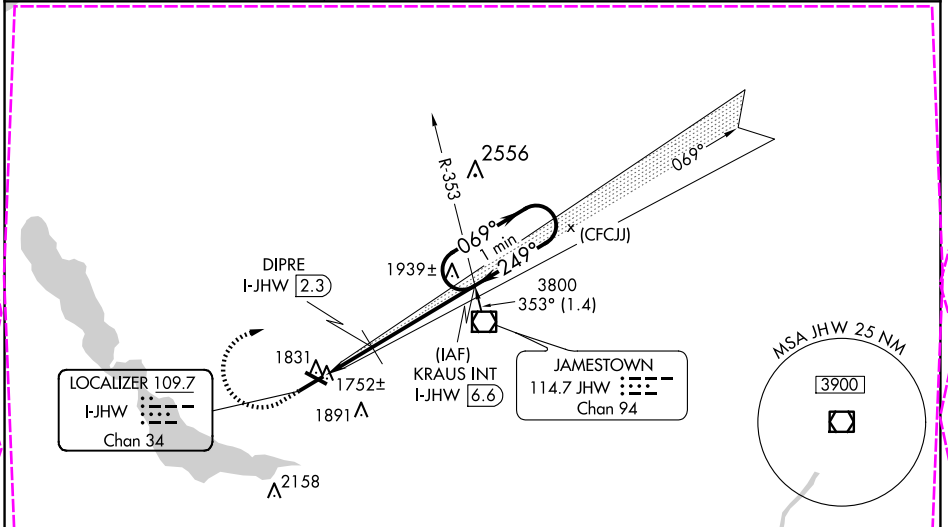
# ILS or LOC RWY 25

CHAUTAUQUA COUNTY/JAMESTOWN (JHW)

**⚠** Circling to Rwy 13/31 NA at night. Autopilot coupled approach NA below 2420. VDP NA with Dunkirk altimeter setting. Cat D SI NA when using Dunkirk altimeter. **⚠** NA When local altimeter setting not received, use Dunkirk altimeter setting and increase S-ILS 25 DA to 2161 and all MDA 200 feet; increase S-ILS 25 all Cats visibility 3/4 mile; increase S-LOC 25 Cats A and B visibility to 3/4, Circling Cats A and B 1 1/4, increase S-LOC 25 Cats C and D visibility to 2, Circling Cats C visibility 2 3/4 and D visibility 3, DIPRE fix minimums increase S-LOC 25 Cats C and D visibility 1 1/8, and Circling Cats C visibility 2 and Cat D visibility 2 3/4 mile. For inoperative MALSR when using Dunkirk altimeter setting, increase S-ILS 25 all Cats visibility 1 3/8 mile. VDP NA when using Dunkirk altimeter setting.

**MALSR**  
MISSED APPROACH: Climb to 2420 then climbing right turn to 3800 on heading 125° and I-JHW LOC course NE to KRAUS INT/ I-JHW 6.6 DME and hold.

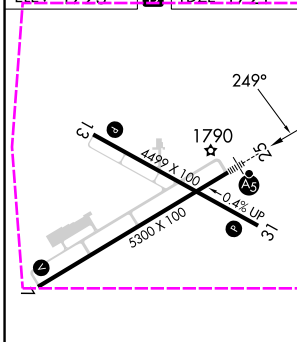
AWOS-3PT <b>118.425</b>	BUFFALO APP CON * <b>126.05</b>	UNICOM <b>122.975 (CTAF) 0</b>
----------------------------	------------------------------------	-----------------------------------



NE-2, 30 OCT 2025 to 27 NOV 2025

NE-2, 30 OCT 2025 to 27 NOV 2025

ELEV 1723 TDZE 1721



2420	3800	LOC crs NE	KRAUS INT	KRAUS INT I-JHW 6.6	One Minute Holding Pattern
hdg 125°					
I-JHW 0.2	*I-JHW 1.1	DIPRE I-JHW 2.3			
*LOC only					
	1 NM	1.1 NM	4.3 NM		

REIL Rwy 31  
MIRL Rwy 13-31  
HIRL Rwy 7-25

FAF to MAP 6.4 NM

Knots	60	90	120	150	180
Min:Sec	6:23	4:15	3:11	2:33	2:08

CATEGORY	A	B	C	D
S-ILS 25			1971-1/2	250 (300-1/2)
S-LOC 25	2420-1/2	699 (700-1/2)	2420-1 1/2	699 (700-1 1/2)
<b>CIRCLING</b>	2420-1	697 (700-1)	2420-2	2420-2 1/4 697 (700-2 1/4)
DIPRE FIX MINIMUMS (DME REQUIRED)				
S-LOC 25	2080-1/2	359 (400-1/2)	2080-5/8	359 (400-5/8)
<b>CIRCLING</b>	2200-1	477 (500-1)	2260-1 1/2	2340-2 537 (600-1 1/2) 617 (700-2)

JAMESTOWN, NEW YORK  
Amdt 8A 14JUL22

CHAUTAUQUA COUNTY/JAMESTOWN (JHW)  
42°09'N-79°15'W  
**ILS or LOC RWY 25**

JAMESTOWN, NEW YORK

AL-731 (FAA)

25331

LOC/DME I-JHW <b>109.7</b> Chan <b>34</b>	APP CRS <b>249°</b>	Rwy Ldg TDZE <b>1721</b> Apt Elev <b>1723</b>
---	------------------------	---

# ILS or LOC RWY 25

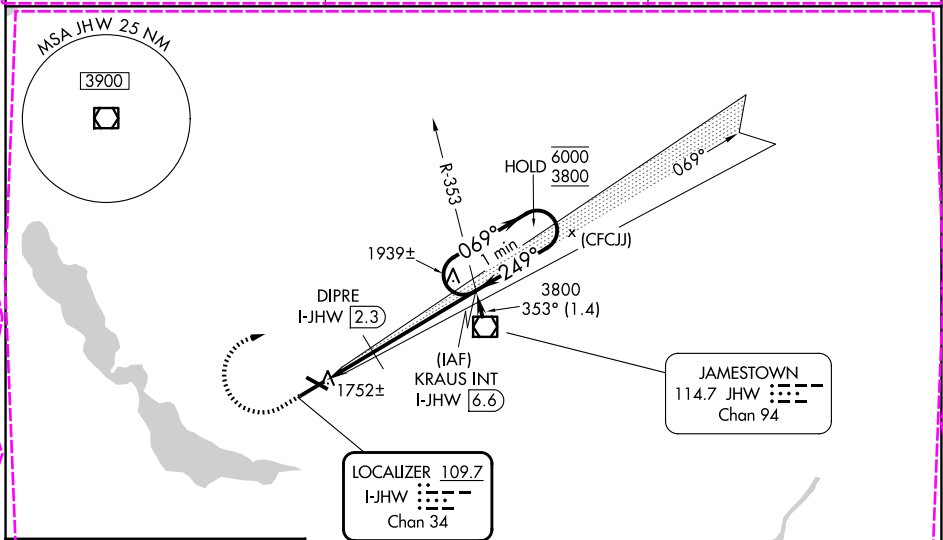
CHAUTAUQUA COUNTY/JAMESTOWN (JHW)

**NA** Autopilot coupled approach NA below 2420. Circling to Rwy 13/31 NA at night. VDP NA when using DKK altimeter setting. When local altimeter setting not received, use DKK altimeter setting and increase S-ILS 25 DA to 2166 feet and all visibilities 3/8 SM, increase all MDA 200 feet, increase S-LOC 25 visibilities Cat A/B 1/4 SM, Cat C/D 1/2 SM, increase Circling Cat C/D 1/2 SM, DIPRE fix minimums increase S-LOC 25 visibilities Cat C/D 1/2 SM, Circling visibilities Cat C 1/2 SM, Cat D 3/4 SM.

**MALSR**

**MISSED APPROACH:** Climb to 2420 then climbing right turn to 3800 on heading 125° and I-JHW localizer course NE (069°) to KRAUS INT/I-JHW 6.6 DME and hold. Continue climb-in-hold.

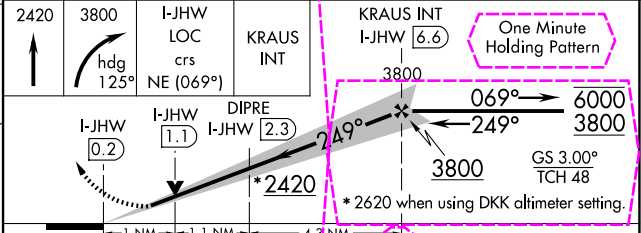
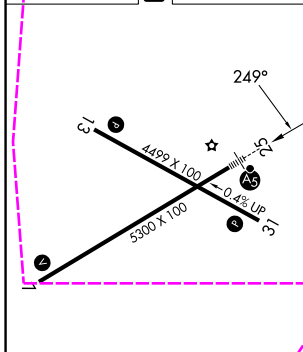
AWOS-3PT <b>118.425</b>	BUFFALO APP CON * <b>126.05</b>	UNICOM <b>122.975</b> (CTAF) <b>1</b>
----------------------------	------------------------------------	--



NE-2, 27 NOV 2025 to 25 DEC 2025

NE-2, 27 NOV 2025 to 25 DEC 2025

ELEV 1723 TDZE 1721



REIL Rwy 31 **1**  
MIRL Rwy 13-31 **1**  
HIRL Rwy 7-25 **1**

FAF to MAP 6.4 NM

Knots	60	90	120	150	180
Min:Sec	6:24	4:16	3:12	2:34	2:08

CATEGORY	A	B	C	D
S-ILS 25	1.971-1/2	250 (300-1/2)		
S-LOC 25	2420-1/2 699 (700-1/2)	2420-1 1/2 699 (700-1/2)		
<b>CIRCLING</b>	2420-1 697 (700-1)	2420-2 697 (700-2)	2420-2 1/4 697 (700-2 1/4)	
<b>DIPRE FIX MINIMUMS (DME REQUIRED)</b>				
S-LOC 25	2080-1/2 359 (400-1/2)	2080-5/8 359 (400-5/8)		
<b>CIRCLING</b>	2200-1 477 (500-1)	2260-1 1/2 537 (600-1 1/2)	2340-2 617 (700-2)	

JAMESTOWN, NEW YORK  
Amdr **8B 27NOV25**

CHAUTAUQUA COUNTY/JAMESTOWN (JHW)  
42°09'N-79°15'W  
**ILS or LOC RWY 25**