

PLATTSBURGH, NEW YORK

AL-729 (FAA)


23166

WAAS CH 78003 W35A	APP CRS 353°	Rwy Idg TDZE 177 Apt Elev 234
---------------------------------	------------------------	---------------------------------------------------

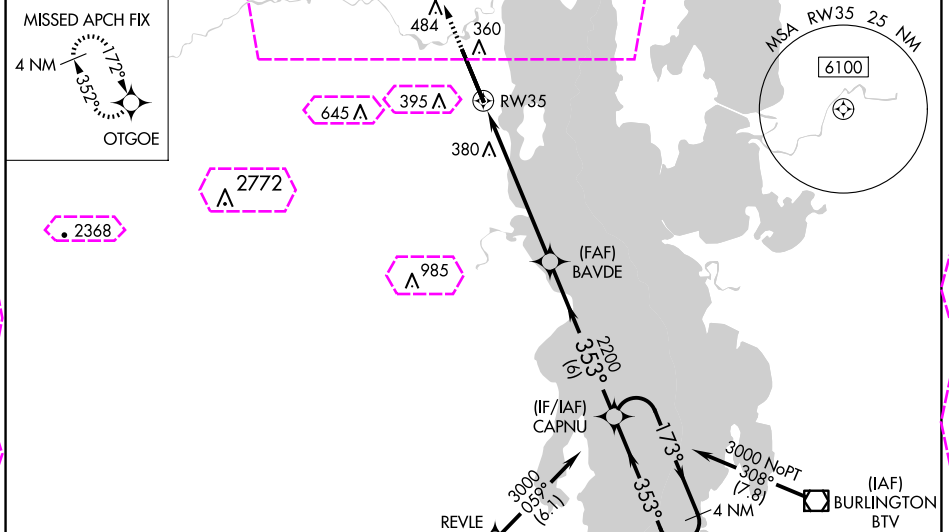
RNAV (GPS) RWY 35

PLATTSBURGH INTL (PBG)

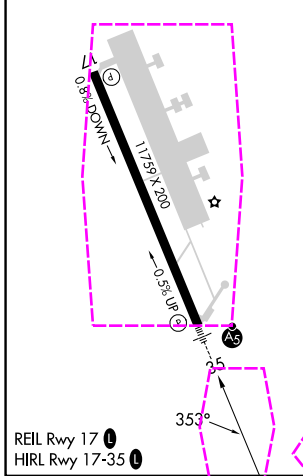
For uncompensated Baro-VNAV systems, LNAV/VNAV NA below -18°C (0°F) or above 54°C (130°F). DME/DME RNP-0.3 NA. For inop MALSR, increase LPV and LNAV/VNAV all Cats visibility to ¾ mile. For inop MALSR when using Burlington altimeter setting, increase LPV and LNAV/VNAV all Cats visibility to 1 mile. When local altimeter setting not received, use Burlington altimeter setting and increase all DA 54 feet and all MDA 60 feet; increase LPV and LNAV/VNAV all Cats visibility to ¾ mile, LNAV Cats C, D visibility to 1¼ mile, and increase Circling Cats C/D visibility ¼ mile. VDP and Baro-VNAV NA when using Burlington Intl altimeter setting.

MALSR

MISSED APPROACH:
 Climb to 3500 direct OTGOE and hold, continue climb-in-hold to 3500.

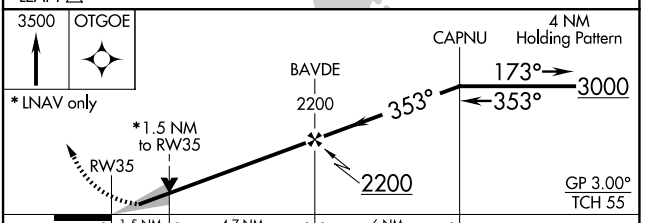
ASOS 132.225	BURLINGTON APP CON ★ 121.1 278.8	CINC DEL 121.85	UNICOM 122.7 (CTAF) 0
------------------------	--------------------------------------------	---------------------------	---------------------------------



ELEV 234	D TDZE 177
----------	-------------------



Procedure NA for arrivals on BTV VORTAC airway radials 311 CW 014.
 Procedure NA for arrivals at LEAFY on V489 southbound.



CATEGORY	A	B	C	D
LPV DA		427-½	250 (200-½)	
LNAV/VNAV DA		434-½	257 (200-½)	
LNAV MDA	700-½	523 (500-½)	700-1	523 (500-1)
CIRCLING	720-1 486 (600-1)	740-1 506 (600-1)	800-1½ 566 (700-1½)	960-2¼ 726 (800-2¼)

PLATTSBURGH, NEW YORK
 Amdt 2 04FEB16

44°39'N-73°28'W

RNAV (GPS) RWY 35

NE-2, 30 OCT 2025 to 27 NOV 2025

NE-2, 30 OCT 2025 to 27 NOV 2025

PLATTSBURGH, NEW YORK

AL-729 (FAA)


25331

WAAS CH 78003 W35A	APP CRS 353°	Rwy Ldg TDZE 177 Apt Elev 234
---------------------------------	------------------------	---------------------------------------------------

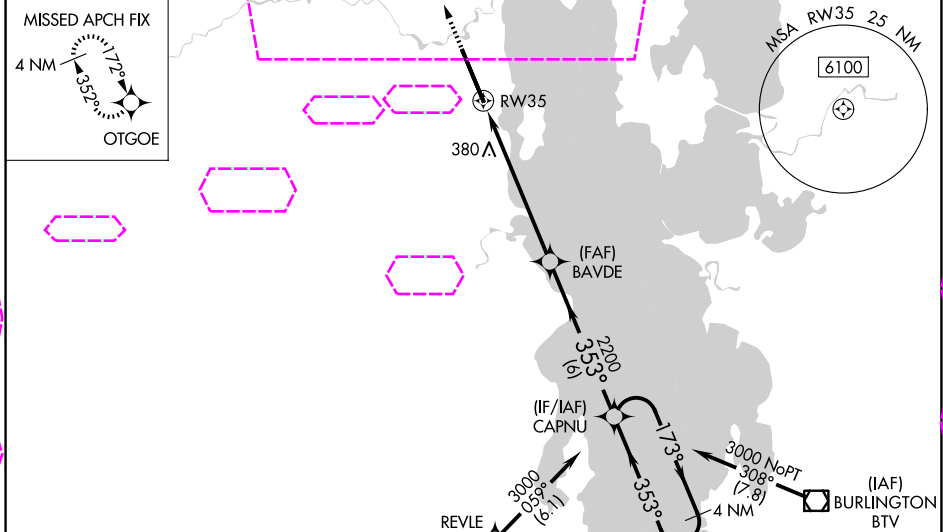
RNAV (GPS) RWY 35

PLATTSBURGH INTL (PBG)

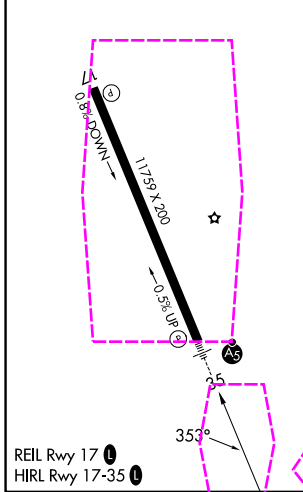
⚠ For uncompensated Baro-VNAV systems, LNAV/VNAV NA below -18°C (0°F) or above 54°C (130°F). DME/DME RNP-0.3 NA. For inop MALS, increase LPV and LNAV/VNAV all Cats visibility to ¾ mile. For inop MALS when using Burlington altimeter setting, increase LPV and LNAV/VNAV all Cats visibility to 1 mile. When local altimeter setting not received, use Burlington altimeter setting and increase all DA 54 feet and all MDA 60 feet; increase LPV and LNAV/VNAV all Cats visibility to ¾ mile, LNAV Cats C, D visibility to 1¼ mile, and increase Circling Cats C/D visibility ¼ mile. VDP and Baro-VNAV NA when using Burlington Intl altimeter setting.

MALS

MISSED APPROACH:
 Climb to 3500 direct OTGOE and hold, continue climb-in-hold to 3500.

ASOS 132.225	BURLINGTON APP CON * 121.1 278.8	UNICOM 122.7 (CTAF) 0
------------------------	--------------------------------------------	---------------------------------

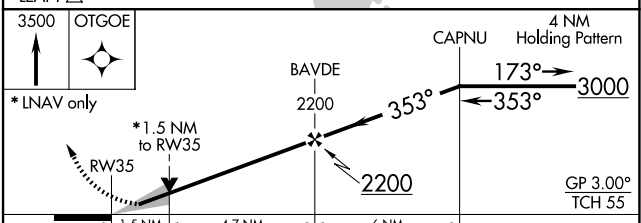


ELEV 234	D TDZE 177
----------	-------------------



Procedure NA for arrivals on BTW VORTAC airway radials 311 CW 014.

Procedure NA for arrivals at LEAFY on V489 southbound.



CATEGORY	A	B	C	D
LPV DA		427-½	250 (200-½)	
LNAV/VNAV DA		434-½	257 (200-½)	
LNAV MDA	720-½	523 (500-½)	700-1	523 (500-1)
CIRCLING	720-1 486 (600-1)	740-1 506 (600-1)	800-1½ 566 (700-1½)	960-2¼ 726 (800-2¼)

PLATTSBURGH, NEW YORK
 Amtd 2 04FEB16

44°39'N-73°28'W

RNAV (GPS) RWY 35

NE-2, 27 NOV 2025 to 25 DEC 2025

NE-2, 27 NOV 2025 to 25 DEC 2025