

PORTSMOUTH, OHIO

AL-708 (FAA)

25275

WAAS CH 70408 W36A	APP CRS 003°	Rwy Ldg TDZE Apt Elev	5001 662 663
--	------------------------	-----------------------------	---

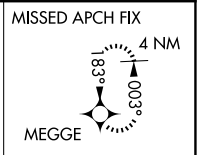
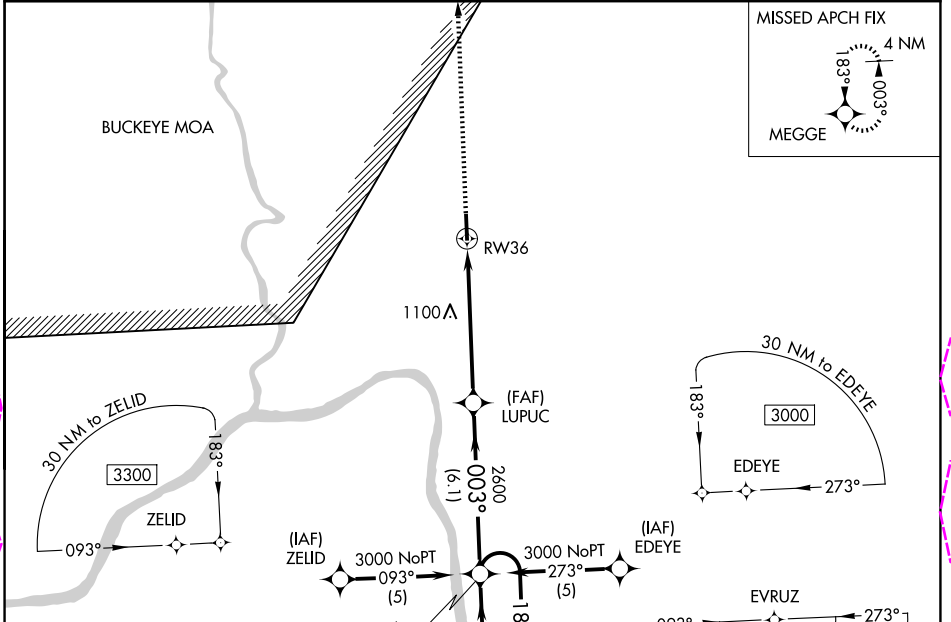
RNAV (GPS) RWY 36

GREATER PORTSMOUTH RGNL (PMH)

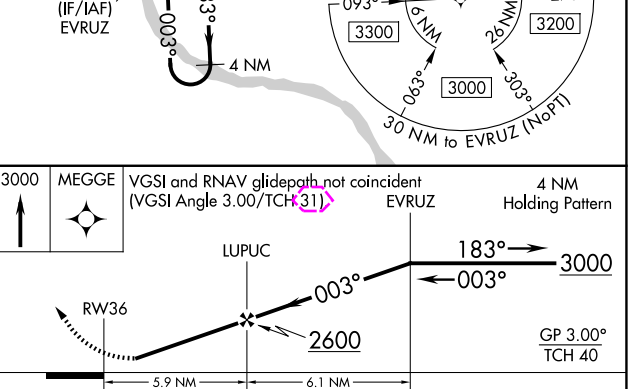
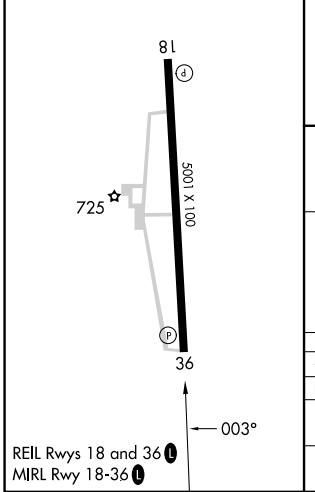
When local altimeter setting not received, use Huntington altimeter setting and increase DA to 1008 feet and LPV visibility ¼ SM all Cats; increase all MDA 100 feet and LNAV Cat B visibility ¼ SM, Cat C/D visibility ½ SM and increase Circling visibility ¼ SM all Cats. Visibility reduction by helicopters NA. DME/DME RNP-0.3 NA.

MISSED APPROACH:
Climb to 3000 direct MEGGE and hold.

AWOS-3PT 125.175	HUNTINGTON APP CON 128.4 270.1	UNICOM 122.8 (CTAF)
----------------------------	--	-------------------------------



ELEV 663	TDZE 662
----------	----------



CATEGORY	A	B	C	D
LPV DA	912-1 250 (300-1)			
LNAV MDA	1400-1	738 (800-1)	1400-2 738 (800-2)	1400-2½ 738 (800-2½)
CIRCLING	1400-1 737 (800-1)	1440-1 777 (800-1)	1440-2½ 777 (800-2½)	1540-2¾ 877 (900-2¾)

PORTSMOUTH, OHIO
Orig-A 15JUL21

38°50'N-82°51'W

RNAV (GPS) RWY 36

EC-2, 30 OCT 2025 to 27 NOV 2025

EC-2, 30 OCT 2025 to 27 NOV 2025

PORTSMOUTH, OHIO

AL-708 (FAA)

25331

WAAS CH 70408 W36A	APP CRS 003°	Rwy Ldg TDZE Apt Elev	5001 662 663
--	------------------------	-----------------------------	---

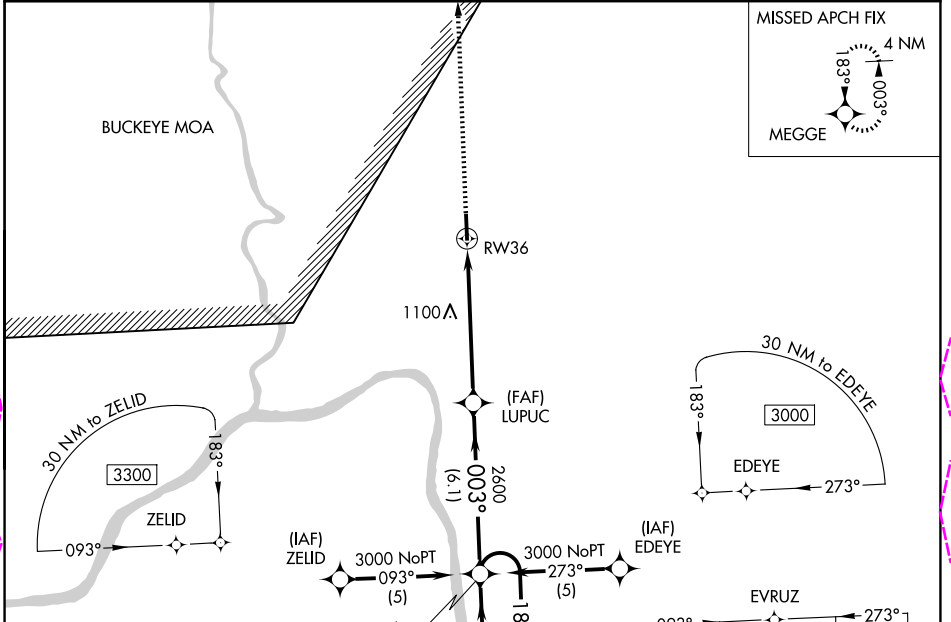
RNAV (GPS) RWY 36

GREATER PORTSMOUTH RGNL (PMH)

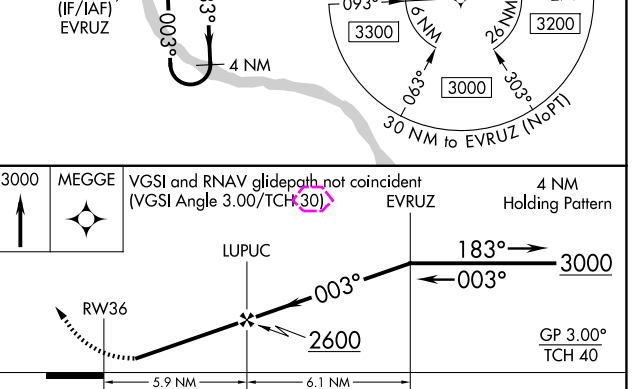
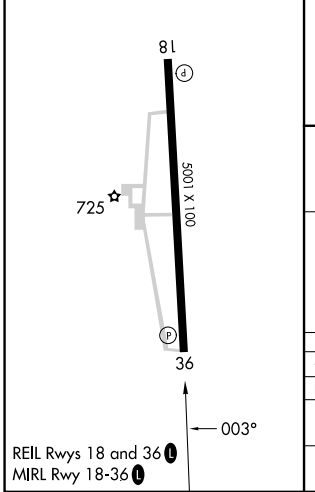
▼ When local altimeter setting not received, use Huntington altimeter setting and increase DA to 1008 feet and LPV visibility ¼ SM all Cats; increase all MDA 100 feet and LNAV Cat B visibility ¼ SM, Cat C/D visibility ½ SM and increase Circling visibility ¼ SM all Cats. Visibility reduction by helicopters NA. DME/DME RNP-0.3 NA.

▲ NA MISSED APPROACH: Climb to 3000 direct MEGGE and hold.

AWOS-3PT 125.175	HUNTINGTON APP CON 128.4 270.1	UNICOM 122.8 (CTAF)
----------------------------	--	-------------------------------



ELEV 663	TDZE 662
----------	----------



CATEGORY	A	B	C	D
LPV DA	912-1 250 (300-1)			
LNAV MDA	1400-1	738 (800-1)	1400-2	738 (800-2)
			1400-2¼	738 (800-2¼)
CIRCLING	1400-1	1440-1	1440-2¼	1540-2¾
	737 (800-1)	777 (800-1)	777 (800-2¼)	877 (900-2¾)

PORTSMOUTH, OHIO
Orig-A 15JUL21

38°50'N-82°51'W

RNAV (GPS) RWY 36

EC-2 27 NOV 2025 to 25 DEC 2025

EC-2 27 NOV 2025 to 25 DEC 2025