

PORTSMOUTH, OHIO

AL-708 (FAA)

25275

WAAS CH <b>45907</b> <b>W18A</b>	APP CRS <b>183°</b>	Rwy Ldg TDZE <b>663</b> Apt Elev <b>663</b>	<b>5001</b> <b>663</b> <b>663</b>
--	------------------------	---	---

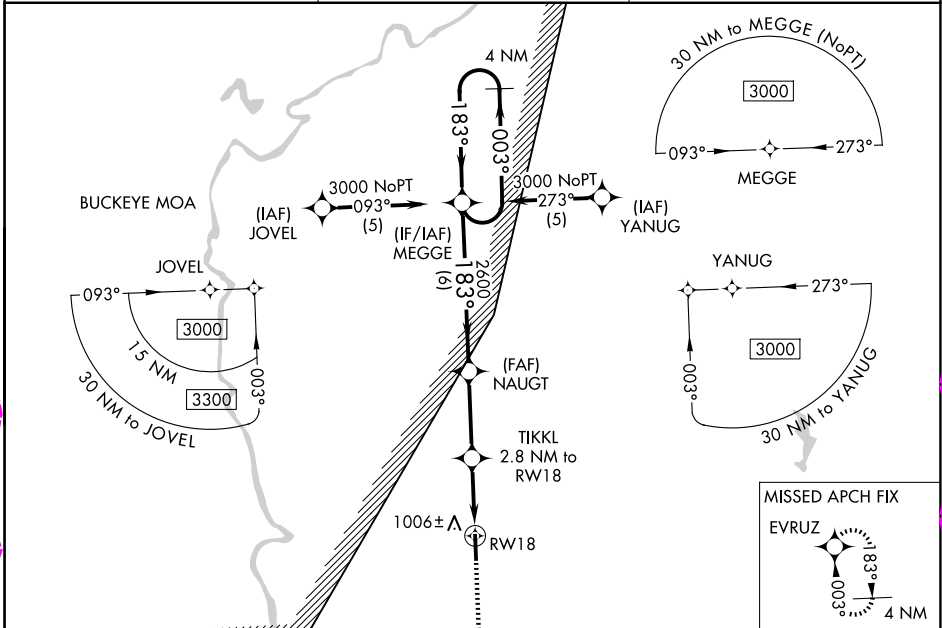
# RNAV (GPS) RWY 18

GREATER PORTSMOUTH RGNL (PMH)

**▽** DME/DME RNP-0.3 NA. Visibility reduction by helicopters NA.  
**△ NA** When local altimeter setting not received, use Huntington altimeter setting and increase LPV DA to 1106 feet and visibility all Cats ¼ SM; increase all MDA 100 feet and LNAV Cat C/D visibility ½ SM and Circling Cat B/C/D ¼ SM.

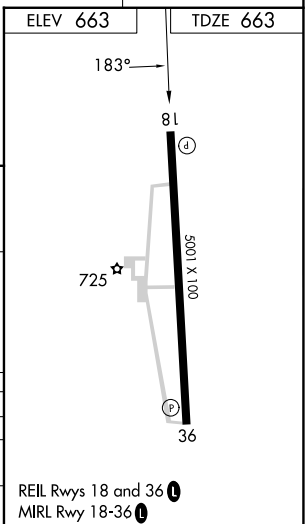
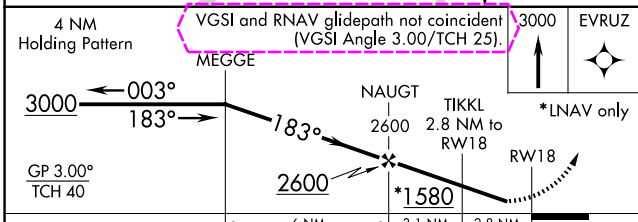
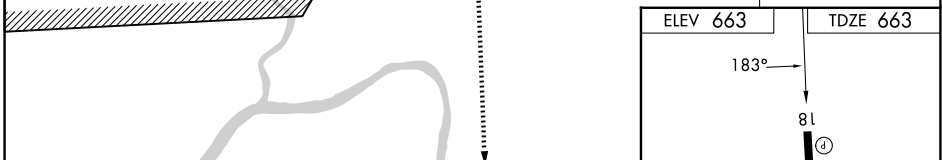
MISSED APPROACH:  
 EVRUZ to 3000 direct  
 CIRMVZ and hold.

AWOS-3PT <b>125.175</b>	HUNTINGTON APP CON <b>128.4 270.1</b>	UNICOM <b>122.8 (CTAF) 0</b>
----------------------------	--	---------------------------------



EC-2, 30 OCT 2025 to 27 NOV 2025

EC-2, 30 OCT 2025 to 27 NOV 2025



CATEGORY	A	B	C	D
LPV DA	1010-1¼ 347 (400-1¼)			
LNAV MDA	1260-1 597 (600-1)		1260-1½ 597 (600-1½)	1260-1¾ 597 (600-1¾)
CIRCLING	1340-1 677 (700-1)	1440-1 777 (800-1)	1440-2¼ 777 (800-2¼)	1540-2¾ 877 (900-2¾)

REIL Rwy 18 and 36 0  
 MIRL Rwy 18-36 0

PORTSMOUTH, OHIO  
 Orig-A 15JUL21

38°50'N-82°51'W

# GREATER PORTSMOUTH RGNL (PMH) RNAV (GPS) RWY 18

WAAS CH <b>45907</b> W <b>18A</b>	APP CRS <b>183°</b>	Rwy Ldg TDZE <b>663</b> Apt Elev <b>663</b>	<b>5001</b> <b>663</b> <b>663</b>
---	------------------------	---	---

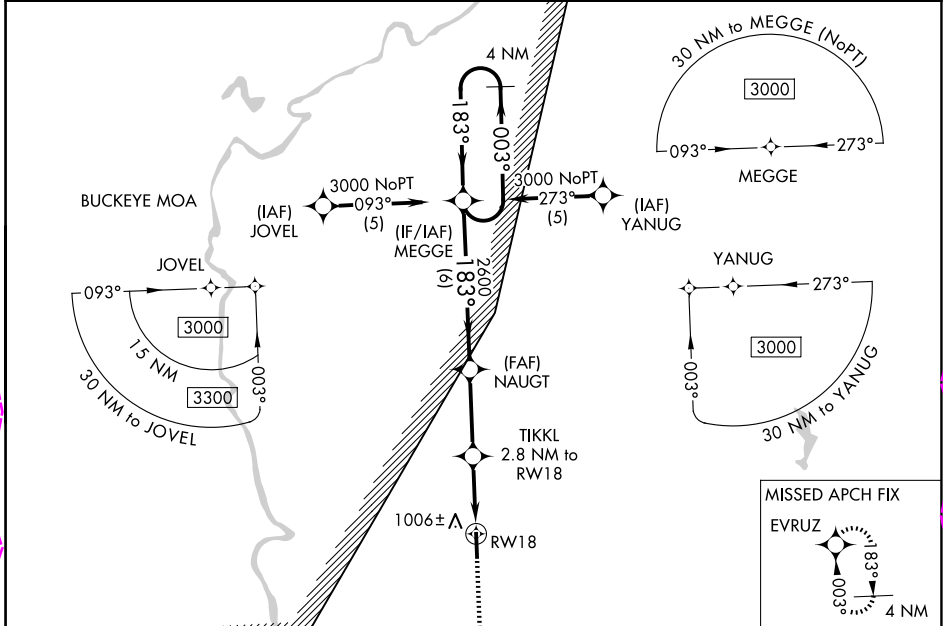
# RNAV (GPS) RWY 18

GREATER PORTSMOUTH RGNL (PMH)

**▽** DME/DME RNP-0.3 NA. Visibility reduction by helicopters NA.  
**△ NA** When local altimeter setting not received, use Huntington altimeter setting and increase LPV DA to 1106 feet and visibility all Cats ¼ SM; increase all MDA 100 feet and LNAV Cat C/D visibility ½ SM and Circling Cat B/C/D ¼ SM.

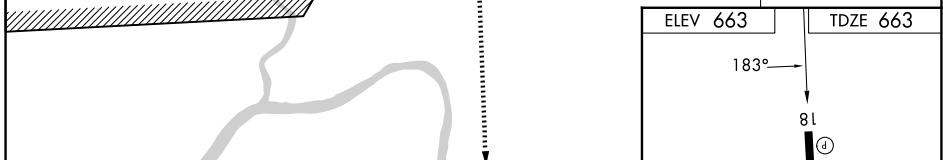
MISSED APPROACH:  
 EVRUZ to 3000 direct  
 CLIMB and hold.

AWOS-3PT <b>125.175</b>	HUNTINGTON APP CON <b>128.4 270.1</b>	UNICOM <b>122.8 (CTAF) 0</b>
----------------------------	--	---------------------------------



EC-2 27 NOV 2025 to 25 DEC 2025

EC-2 27 NOV 2025 to 25 DEC 2025



4 NM Holding Pattern	VGSi and RNAV glidepath not coincident (VGSi Angle 3.00/TCH 27).			3000 EVRUZ
GP 3.00° TCH 40	NAUGHT 2600 TIKKL 2.8 NM to RW18			*LNAV only
	6 NM	3.1 NM	2.8 NM	

CATEGORY	A	B	C	D
LPV DA	1010-1¼ 347 (400-1¼)			
LNAV MDA	1260-1 597 (600-1)		1260-1½ 597 (600-1½)	1260-1¾ 597 (600-1¾)
CIRCLING	1340-1 677 (700-1)	1440-1 777 (800-1)	1440-2¼ 777 (800-2¼)	1540-2¾ 877 (900-2¾)

REIL Rwy 18 and 36 0  
 MIRL Rwy 18-36 0