

GOODLAND, KANSAS

AL-684 (FAA)

22251

VORTAC GLD 115.1 Chan 98	APP CRS 332°	Rwy Idg 5499 TDZE 3654 Apt Elev 3657
--	------------------------	---

VOR RWY 30

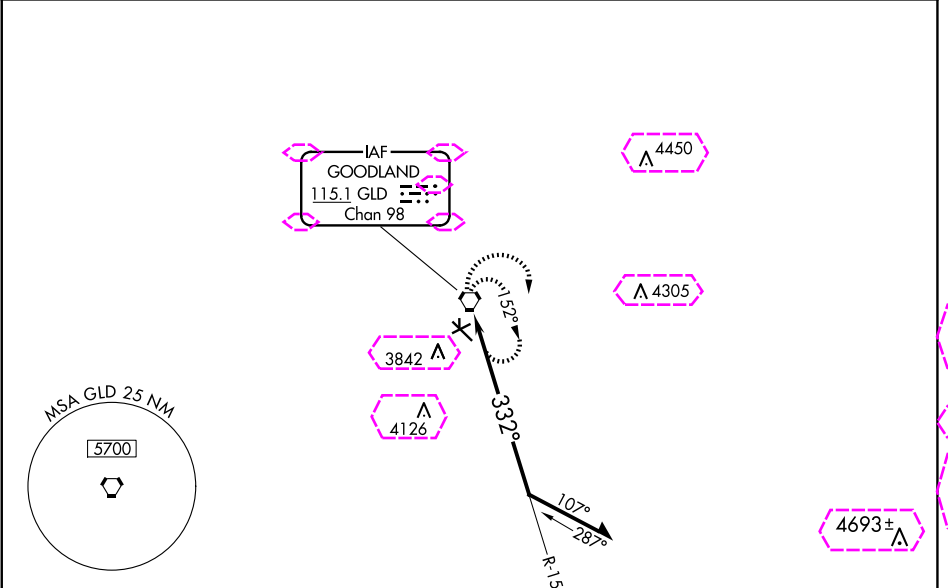
RENNER FLD/GOODLAND MUNI (GLD)

⚠ Inoperative table does not apply to S-30 Cat C/D. Circling NA south of Rwy 5 and 30. When local altimeter setting not received, use Burlington, CO altimeter setting and increase all MDA 160 feet; increase S-30 Cat C/D visibilities to 2 miles, Circling Cat C visibility to 2 miles and Circling Cat D visibility to 2 1/4 miles. Circling Rwy 5, 23 NA at night. Circling NA to Rwys 17 and 35.



MISSED APPROACH: Climbing right turn to 5600 in GLD VORTAC holding pattern.

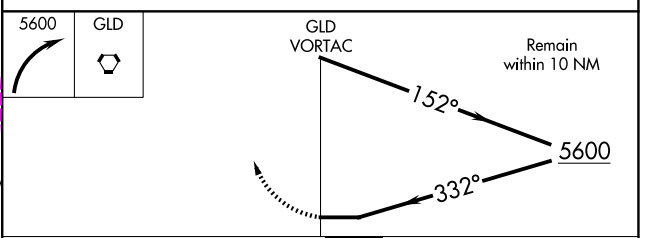
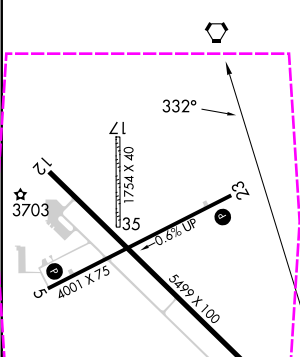
ASOS 121.025	DENVER CENTER 132.7 226.675	UNICOM 122.8 (CTAF) 0
------------------------	---------------------------------------	--



NC-2. 30 OCT 2025 to 27 NOV 2025

NC-2. 30 OCT 2025 to 27 NOV 2025

ELEV 3657	TDZE 3654
-----------	-----------



CATEGORY	A	B	C	D
S-30	4200-1/2 546 (600-1/2)		4200-1 5/8 546 (600-1 5/8)	
CIRCLING	4200-1 543 (600-1)		4200-1 5/8 543 (600-1 5/8)	4240-2 583 (600-2)

GOODLAND, KANSAS
Amdt 9C 30JAN20

39°22'N-101°42'W

RENNER FLD/GOODLAND MUNI (GLD)
VOR RWY 30

GOODLAND, KANSAS

AL-684 (FAA)

25331

VORTAC GLD 115.1 Chan 98	APP CRS 332°	Rwy Ldg TDZE 3654 Apt Elev 3657
--	------------------------	---

VOR RWY 30

RENNER FLD/GOODLAND MUNI (GLD)

⚠ Inoperative table does not apply to S-30 Cat C/D. Circling NA south of Rwy 5 and 30. When local altimeter setting not received, use Burlington, CO altimeter setting and increase all MDA 160 feet; increase S-30 Cat C/D visibilities to 2 miles, Circling Cat C visibility to 2 miles and Circling Cat D visibility to 2 1/4 miles. Circling Rwy 5, 23 NA at night. Circling NA to Rwys 17 and 35.

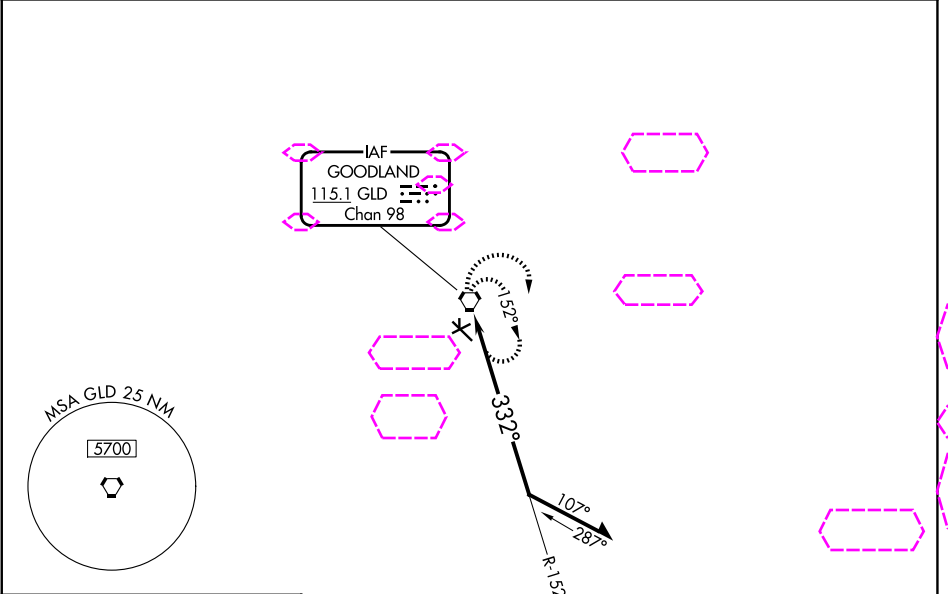
MALSRL

MISSED APPROACH: Climbing right turn to 5600 in GLD VORTAC holding pattern.

ASOS
121.025

DENVER CENTER
132.7 226.675

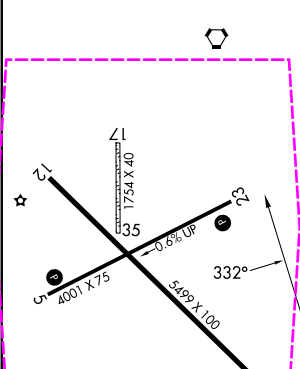
UNICOM
122.8 (CTAF) **0**



NC-2, 127 NOV 2025 to 25 DEC 2025

NC-2, 27 NOV 2025 to 25 DEC 2025

ELEV 3657 TDZE 3654



5600 GLD

GLD VORTAC

Remain within 10 NM

152°
332°
5600

CATEGORY	A	B	C	D
S-30	4200-1/2 546 (600-1/2)		4200-1 5/8 546 (600-1 5/8)	
CIRCLING	4200-1 543 (600-1)		4200-1 5/8 543 (600-1 5/8)	4240-2 583 (600-2)

GOODLAND, KANSAS
Amdt 9C 30JAN20

39°22'N-101°42'W

RENNER FLD/GOODLAND MUNI (GLD)
VOR RWY 30