

GOODLAND, KANSAS

AL-684 (FAA)

22251

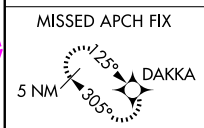
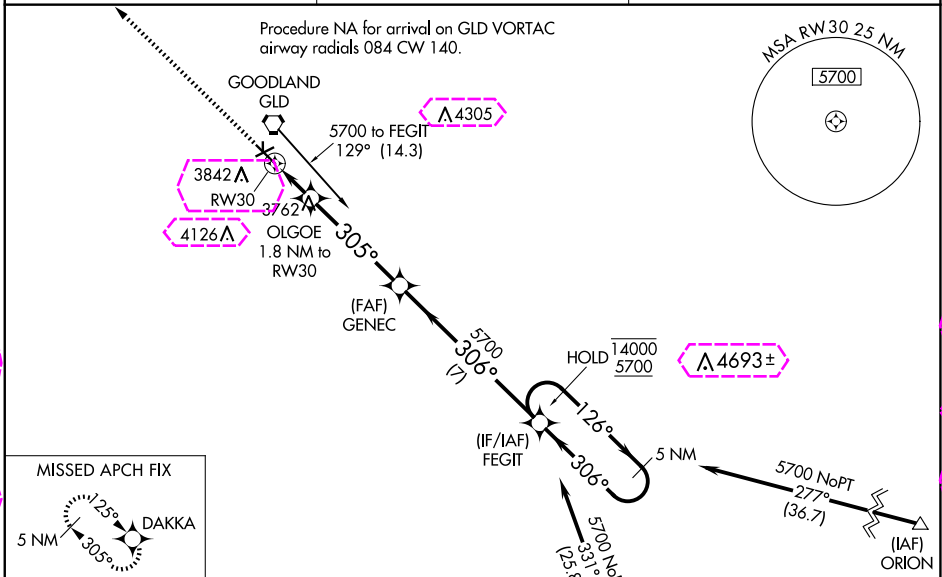
WAAS CH 48920 W30A	APP CRS 305°	Rwy Idg TDZE Apt Elev	5499 3653 3657
--	------------------------	-----------------------------	---

RNAV (GPS) RWY 30

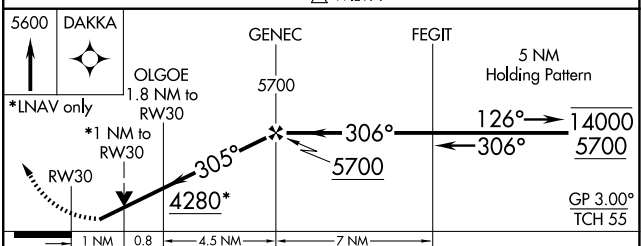
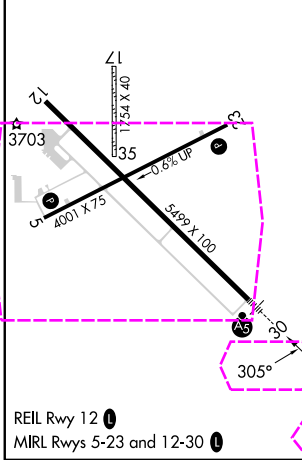
RENNER FLD/GOODLAND MUNI (GLD)

RNP APCH.	MALSR	MISSED APPROACH: Climb to 5600 direct DAKKA and hold.
<p>⚠ Circling NA to Rwys 17 and 35. Circling NA south of Rws 5 and 30. Rwy 30 helicopter visibility reduction below 3/4 SM NA. Inop table does not apply. For uncompensated Baro-VNAV systems, LNAV/VNAV NA below -22°C or above 54°C.</p>		

ASOS 121.025	DENVER CENTER 132.7 226.675	UNICOM 122.8 (CTAF)
------------------------	---------------------------------------	-------------------------------



ELEV 3657	TDZE 3653
-----------	-----------



CATEGORY	A	B	C	D
LPV DA		3903-1	250 (300-1)	
LNAV/VNAV DA		3903-1	250 (300-1)	
LNAV MDA		4020-1	367 (400-1)	
CIRCLING	4080-1 423 (500-1)	4120-1 463 (500-1)	4120-1½ 463 (500-1½)	4240-2 583 (600-2)

GOODLAND, KANSAS
Amdt 1D 25FEB21

39°22'N-101°42'W

RNAV (GPS) RWY 30

NC-2: 30 OCT 2025 to 27 NOV 2025

NC-2: 30 OCT 2025 to 27 NOV 2025

GOODLAND, KANSAS

AL-684 (FAA)

25331

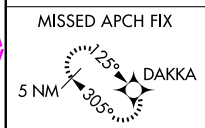
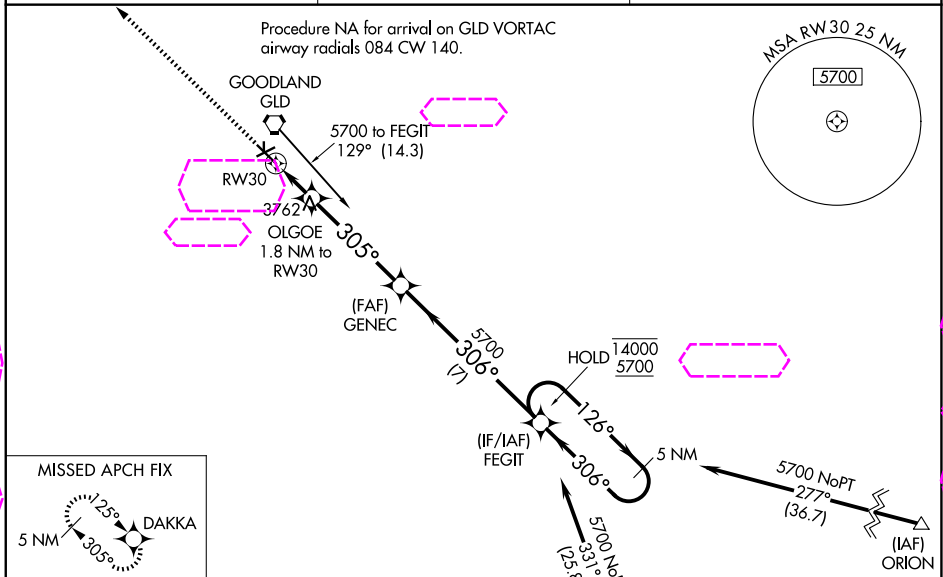
WAAS CH 48920 W30A	APP CRS 305°	Rwy Ldg TDZE Apt Elev	5499 3653 3657
--	------------------------	-----------------------------	---

RNAV (GPS) RWY 30

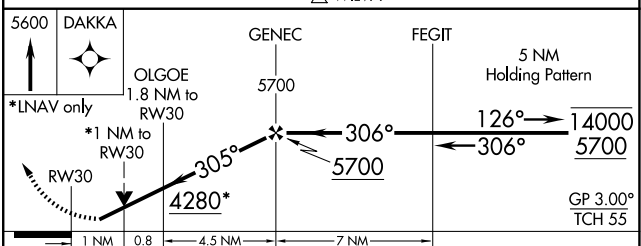
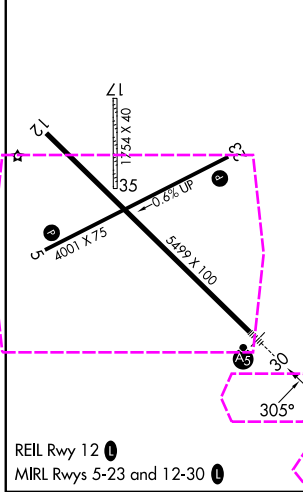
RENNER FLD/GOODLAND MUNI (GLD)

RNP APCH.	MALSR	MISSED APPROACH: Climb to 5600 direct DAKKA and hold.
<p>⚠ Circling NA to Rwys 17 and 35. Circling NA south of Rwys 5 and 30. Rwy 30 helicopter visibility reduction below 3/4 SM NA. Inop table does not apply. For uncompensated Baro-VNAV systems, LNAV/VNAV NA below -22°C or above 54°C.</p>		

ASOS 121.025	DENVER CENTER 132.7 226.675	UNICOM 122.8 (CTAF)
------------------------	---------------------------------------	-------------------------------



ELEV 3657	TDZE 3653
-----------	-----------



CATEGORY	A	B	C	D
LPV DA		3903-1	250 (300-1)	
LNAV/VNAV DA		3903-1	250 (300-1)	
LNAV MDA		4020-1	367 (400-1)	
CIRCLING	4080-1 423 (500-1)	4120-1 463 (500-1)	4120-1½ 463 (500-1½)	4240-2 583 (600-2)

GOODLAND, KANSAS
Amdt 1D 25FEB21

39°22'N-101°42'W

RNAV (GPS) RWY 30

NC-2, 27 NOV 2025 to 25 DEC 2025

NC-2, 27 NOV 2025 to 25 DEC 2025