

GOODLAND, KANSAS

AL-684 (FAA)

22307

WAAS CH 70644 W23A	APP CRS 234°	Rwy Idg TDZE Apt Elev	4001 3652 3658
--	------------------------	-----------------------------	---

RNAV (GPS) RWY 23

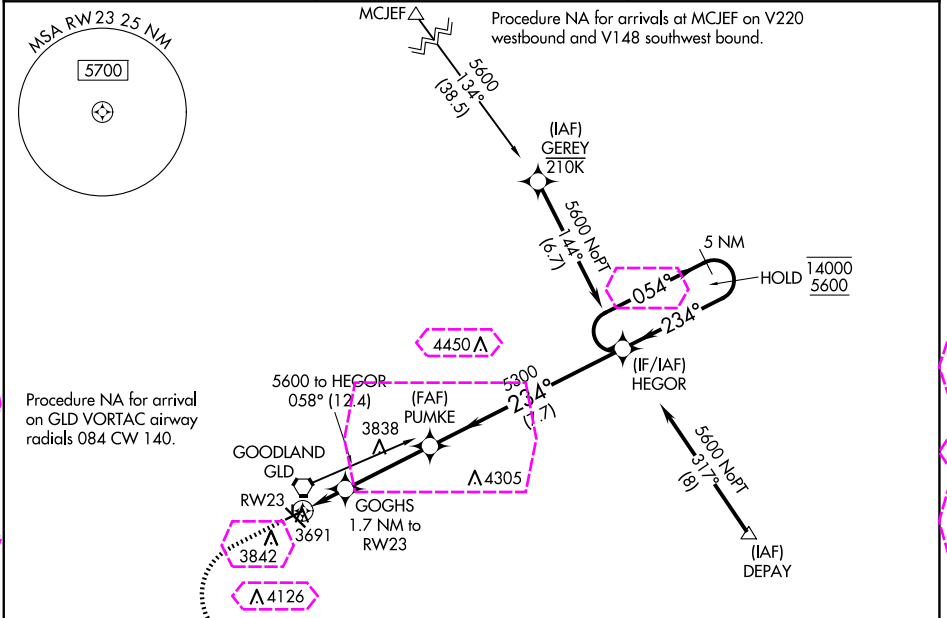
RENNER FLD/GOODLAND MUNI (GLD)

RNP APCH - GPS.

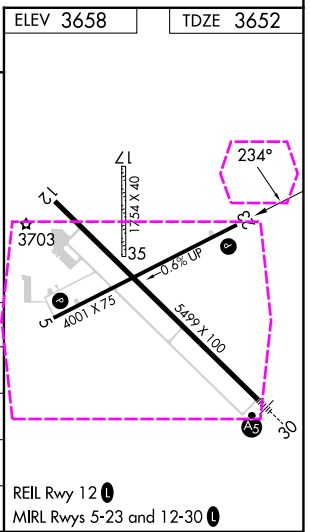
▼ Circling NA to Rwy 17 and 35. Circling NA south of Rwy 5 and 30.
▲ For uncompensated Baro-VNAV systems, LNAV/VNAV NA below -21°C or above 54°C. Circling Rwy 5 NA at night.

MISSED APPROACH: Climb to 4200 then climbing left turn to 5600 direct HEGOR and hold.

ASOS 121.025	DENVER CENTER 132.7 226.675	UNICOM 122.8 (CTAF) 0
------------------------	---------------------------------------	---------------------------------



ELEV 3658	TDZE 3652			
4200	5600	HEGOR		
<p>HEGOR 5 NM Holding Pattern</p> <p>GOGHS 1.7 NM to RWY 23</p> <p>RWY 23 1.1 NM to RWY 23</p> <p>PUMKE 5300</p> <p>HEGOR 5300</p> <p>4220</p> <p>5300</p> <p>14000</p> <p>5600</p> <p>GP 3.00°</p> <p>TCH 42</p>				
CATEGORY	A	B	C	D
LPV DA	3902-1 250 (300-1)			NA
LNAV/VNAV DA	3939-1 287 (300-1)			NA
LNAV MDA	4040-1 388 (400-1)		4040-1 388 (400-1 1/8)	NA
CIRCLING	4080-1 422 (500-1)	4120-1 462 (500-1)	4120-1 462 (500-1 1/2)	NA



GOODLAND, KANSAS
Amdt 2 03NOV22

39°22'N-101°42'W

RNAV (GPS) RWY 23

NC-2 30 OCT 2025 to 27 NOV 2025

NC-2 30 OCT 2025 to 27 NOV 2025

GOODLAND, KANSAS

AL-684 (FAA)

25331

WAAS CH 70644 W23A	APP CRS 234°	Rwy Ldg TDZE Apt Elev	4001 3652 3658
--	------------------------	-----------------------------	---

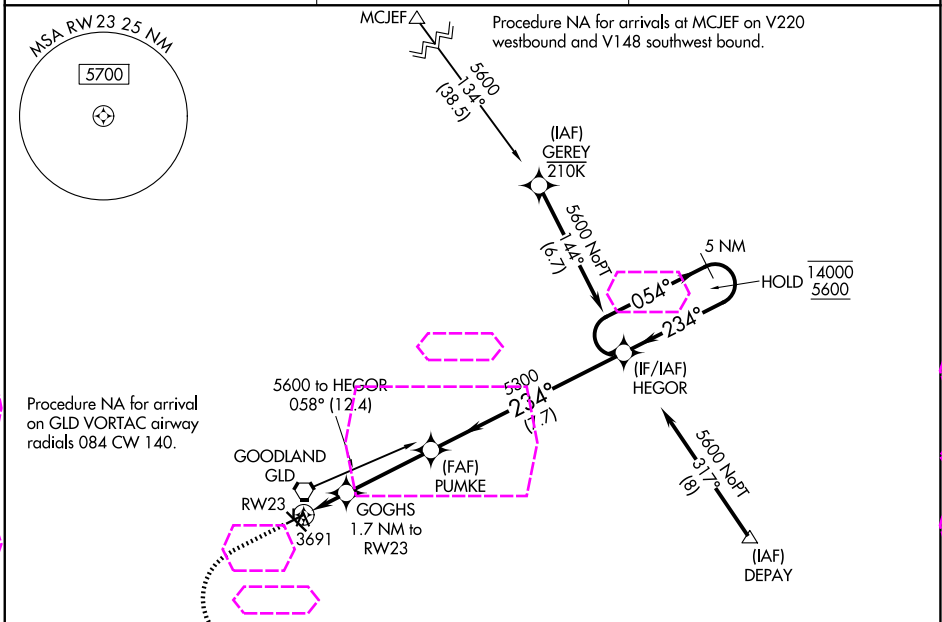
RNAV (GPS) RWY 23
RENNER FLD/GOODLAND MUNI (GLD)

RNP APCH - GPS.

⚠ Circling NA to Rwy 17 and 35. Circling NA south of Rwy 5 and 30.
⚠ For uncompensated Baro-VNAV systems, LNAV/VNAV NA below -21°C or above 54°C. Circling Rwy 5 NA at night.

MISSED APPROACH: Climb to 4200 then climbing left turn to 5600 direct HEGOR and hold.

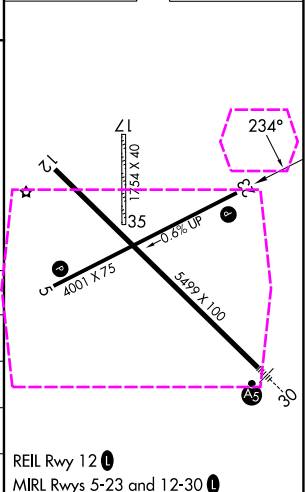
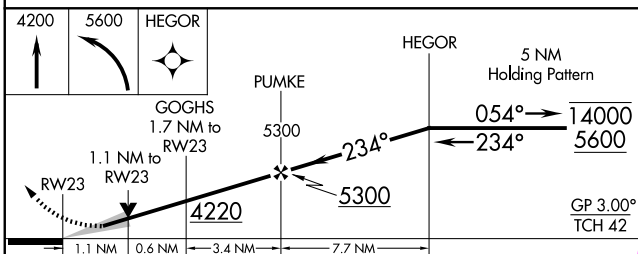
ASOS 121.025	DENVER CENTER 132.7 226.675	UNICOM 122.8 (CTAF) 0
------------------------	---------------------------------------	---------------------------------



NC-2 127 NOV 2025 to 25 DEC 2025

NC-2 27 NOV 2025 to 25 DEC 2025

ELEV 3658	TDZE 3652
-----------	-----------



CATEGORY	A	B	C	D
LPV DA	3902-1	250 (300-1)		NA
LNAV/VNAV DA	3939-1	287 (300-1)		NA
LNAV MDA	4040-1	388 (400-1)	4040-1 1/8 388 (400-1 1/8)	NA
CIRCLING	4080-1 422 (500-1)	4120-1 462 (500-1)	4120-1 1/2 462 (500-1 1/2)	NA

GOODLAND, KANSAS
Amdt 2 03NOV22

39°22'N-101°42'W

RENNER FLD/GOODLAND MUNI (GLD)
RNAV (GPS) RWY 23