

LOC/DME I-GLD 108.9 Chan 26	APP CRS 305°	Rwy Ldg 5499 TDZE 3653 Apt Elev 3658
--	------------------------	---

ILS or LOC RWY 30
RENNER FLD/GOODLAND MUNI (GLD)

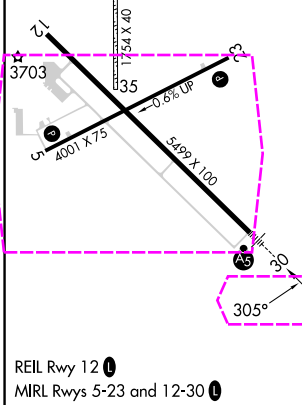
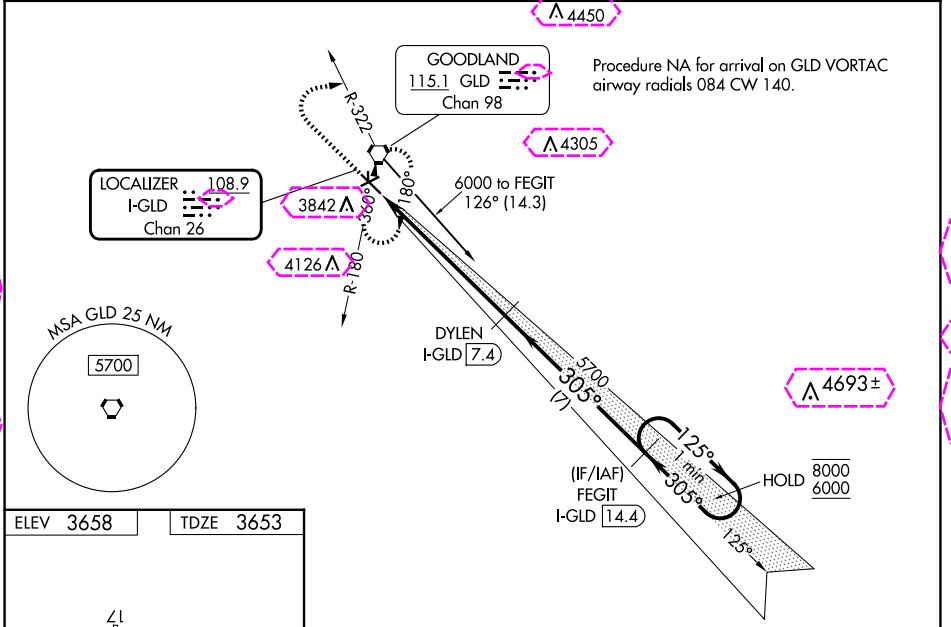
DME required.

⚠ VDP NA when using ITR altimeter setting. Circling Rwy 5 NA at night. Circling NA south of Rwy 5 and 30. Circling NA to Rwy 17 and 35. Rwy 30 helicopter visibility reduction below 3/4 SM NA. When local altimeter setting not received, use ITR altimeter setting: increase S-ILS 30 to DA 4043 feet; increase all MDAs 140 feet and S-LOC 30 Cat C and D visibility 3/8 SM, and Circling Cat C and D visibility 1/4 SM. For inop ALS, increase S-LOC 30 Cat C and D visibility to 1/8 SM. For inop ALS when using ITR altimeter setting, increase S-ILS 30 all Cats visibility to 1/8 SM, and S-LOC 30 Cat C and D visibility to 1/4 SM. Inop table does not apply to S-ILS 30 all Cats and S-LOC 30 Cats A and B.

MALSR

MISSED APPROACH: Climb to 6000 then right turn on heading 070° and GLD VORTAC R-322 to GLD VORTAC and hold.

ASOS 121.025	DENVER CENTER 132.7 226.675	UNICOM 122.8 (CTAF)
------------------------	---------------------------------------	-------------------------------



6000	hdg 070°	GLD R-322	GLD	FEGIT I-GLD 14.4	One Minute Holding Pattern
8000	125°	305°	5700	305°	6000
5700	305°	5700	DYLEN I-GLD 7.4	I-GLD 2.4	GS 3.00° TCH 55
I-GLD 1.2	I-GLD 2.4	I-GLD 7.4	I-GLD 14.4		
1.3 NM	5 NM	7 NM			
CATEGORY	A	B	C	D	
S-ILS 30		3903-1	250 (300-1)		
S-LOC 30		4120-1	467 (500-1)		
CIRCLING	4120-1	462 (500-1)	4120-1½ 462 (500-1½)	4240-2 582 (600-2)	

NC-2 30 OCT 2025 to 27 NOV 2025

NC-2 30 OCT 2025 to 27 NOV 2025

LOC/DME I-GLD 108.9 Chan 26	APP CRS 305°	Rwy Ldg 5499 TDZE 3653 Apt Elev 3658
--	------------------------	---

ILS or LOC RWY 30
RENNER FLD/GOODLAND MUNI (GLD)

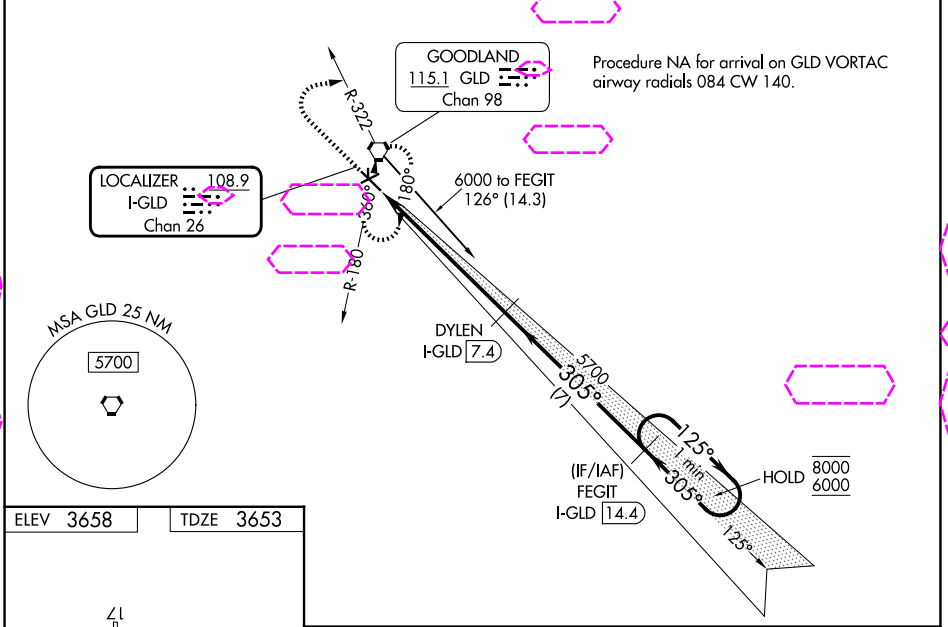
DME required.

⚠ VDP NA when using ITR altimeter setting. Circling Rwy 5 NA at night. Circling NA south of Rwy 5 and 30. Circling NA to Rwy 17 and 35. Rwy 30 helicopter visibility reduction below 3/4 SM NA. When local altimeter setting not received, use ITR altimeter setting: increase S-ILS 30 to DA 4043 feet; increase all MDAs 140 feet and S-LOC 30 Cat C and D visibility 3/8 SM, and Circling Cat C and D visibility 1/4 SM. For inop ALS, increase S-LOC 30 Cat C and D visibility to 1 1/8 SM. For inop ALS when using ITR altimeter setting, increase S-ILS 30 all Cats visibility to 1 1/8 SM, and S-LOC 30 Cat C and D visibility to 1 1/4 SM. Inop table does not apply to S-ILS 30 all Cats and S-LOC 30 Cats A and B.

MALS R

MISSED APPROACH: Climb to 6000 then right turn on heading 070° and GLD VORTAC R-322 to GLD VORTAC and hold.

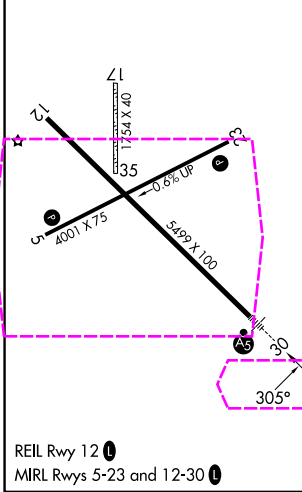
ASOS 121.025	DENVER CENTER 132.7 226.675	UNICOM 122.8 (CTAF) 0
------------------------	---------------------------------------	---------------------------------



NC-2 127 NOV 2025 to 25 DEC 2025

NC-2 27 NOV 2025 to 25 DEC 2025

ELEV 3658	TDZE 3653
-----------	-----------



6000	hdg 070°	GLD R-322	GLD	FEGIT I-GLD 14.4	One Minute Holding Pattern
↑	↷	↷	⬠		
			DYLEN I-GLD 7.4		
			I-GLD 2.4		
			I-GLD 1.2		
			5700		
			5700		
			125°		
			305°		
			8000		
			6000		
			GS 3.00°		
			TCH 55		
			1.3 NM	5 NM	7 NM
CATEGORY	A	B	C	D	
S-ILS 30		3903-1	250 (300-1)		
S-LOC 30		4120-1	467 (500-1)		
CIRCLING	4120-1	462 (500-1)	4120-1 1/2 462 (500-1 1/2)	4240-2 582 (600-2)	