

OLYMPIA, WASHINGTON

AL-645 (FAA)

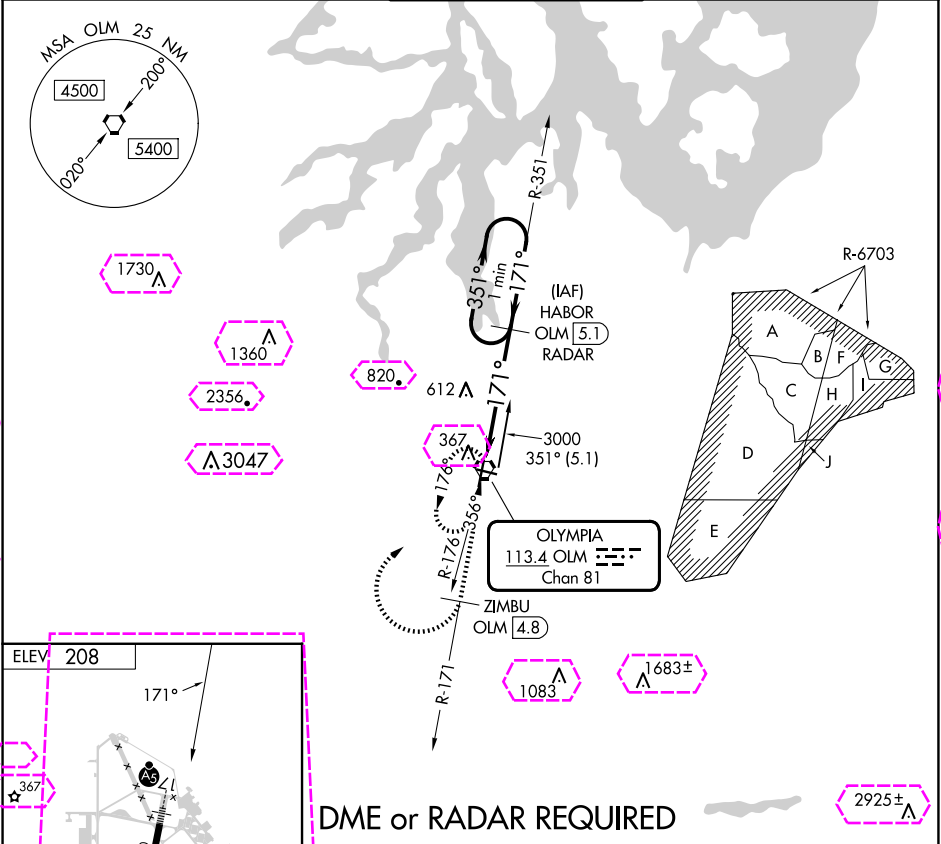
25051

VORTAC OLM 113.4 Chan 81	APP CRS 171°	Rwy Idg TDZE Apt Elev	N/A N/A 208
---------------------------------------	------------------------	-----------------------------	--------------------------

VOR-A
OLYMPIA RGNL (OLM)

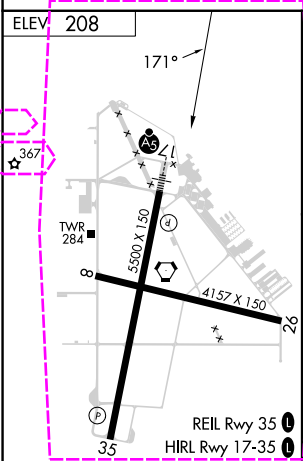
▲ DME required. MISSED APPROACH: Climb to 4200 on OLM VORTAC R-171 to ZIMBU/OLM 4.8 DME and climbing right turn direct OLM VORTAC and hold, continue climb-in-hold to 4200.

ATIS 135.725	SEATTLE APP CON 121.1 290.9	OLYMPIA TOWER* 124.4 (CTAF) 0 254.25	GND CON 121.6	UNICOM 122.95
------------------------	---------------------------------------	---	-------------------------	-------------------------

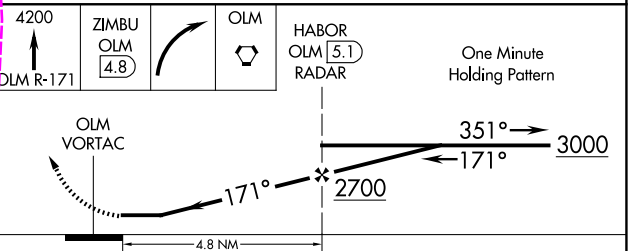


NW-1, 30 OCT 2025 to 27 NOV 2025

NW-1, 30 OCT 2025 to 27 NOV 2025



DME or RADAR REQUIRED



FAF to MAP 4.8 NM						
Knots	60	90	120	150	180	
Min:Sec	4:48	3:12	2:24	1:55	1:36	
CATEGORY	A		B		C	D
CIRCLING	880-1		672 (700-1)		1020-2½ 812 (900-2½)	1020-2¾ 812 (900-2¾)

OLYMPIA, WASHINGTON
Amdt 2 03JAN19

46°58'N-122°54'W

OLYMPIA RGNL (OLM)
VOR-A

OLYMPIA, WASHINGTON

AL-645 (FAA)

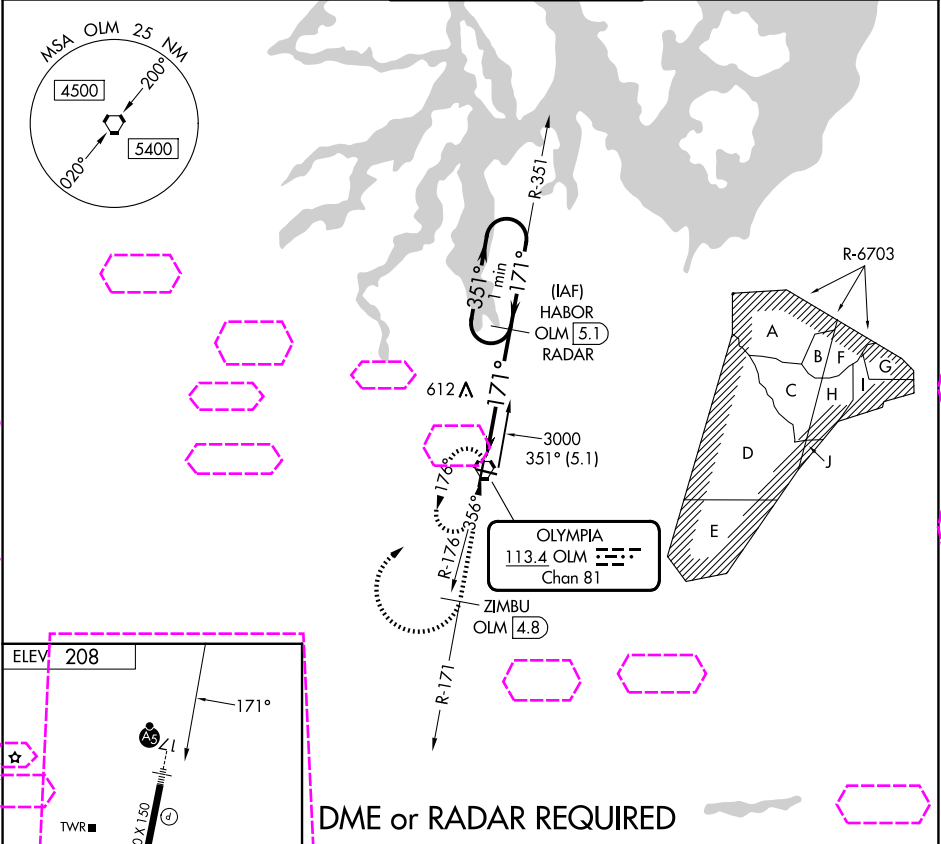
25331

VORTAC OLM 113.4 Chan 81	APP CRS 171°	Rwy Ldg TDZE Apt Elev	N/A N/A 208
---------------------------------------	------------------------	-----------------------------	--------------------------

VOR-A
OLYMPIA RGNL (OLM)

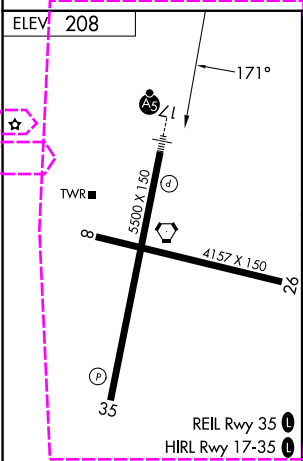
⚠ DME required. MISSED APPROACH: Climb to 4200 on OLM VORTAC R-171 to ZIMBU/OLM 4.8 DME and climbing right turn direct OLM VORTAC and hold, continue climb-in-hold to 4200.

ATIS 135.725	SEATTLE APP CON 121.1 290.9	OLYMPIA TOWER* 124.4 (CTAF) 0 254.25	GND CON 121.6	UNICOM 122.95
------------------------	---------------------------------------	---	-------------------------	-------------------------

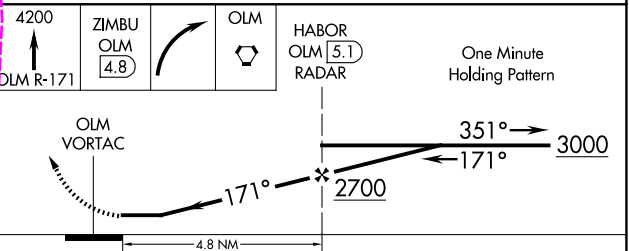


NW-1, 27 NOV 2025 to 25 DEC 2025

NW-1, 27 NOV 2025 to 25 DEC 2025



DME or RADAR REQUIRED



FAF to MAP 4.8 NM								
Knots	60	90	120	150	180			
Min:Sec	4:48	3:12	2:24	1:55	1:36			
CATEGORY	A		B		C		D	
CIRCLING	880-1		672 (700-1)		1020-2½ 812 (900-2½)		1020-2¾ 812 (900-2¾)	

OLYMPIA, WASHINGTON
Amdt 2 03JAN19

46°58'N-122°54'W

OLYMPIA RGNL (OLM)
VOR-A