

OLYMPIA, WASHINGTON

AL-645 (FAA)

25331

VORTAC OLM 113.4 Chan 81	APP CRS 356°	Rwy Ldg TDZE 208 Apt Elev 208
--	------------------------	---

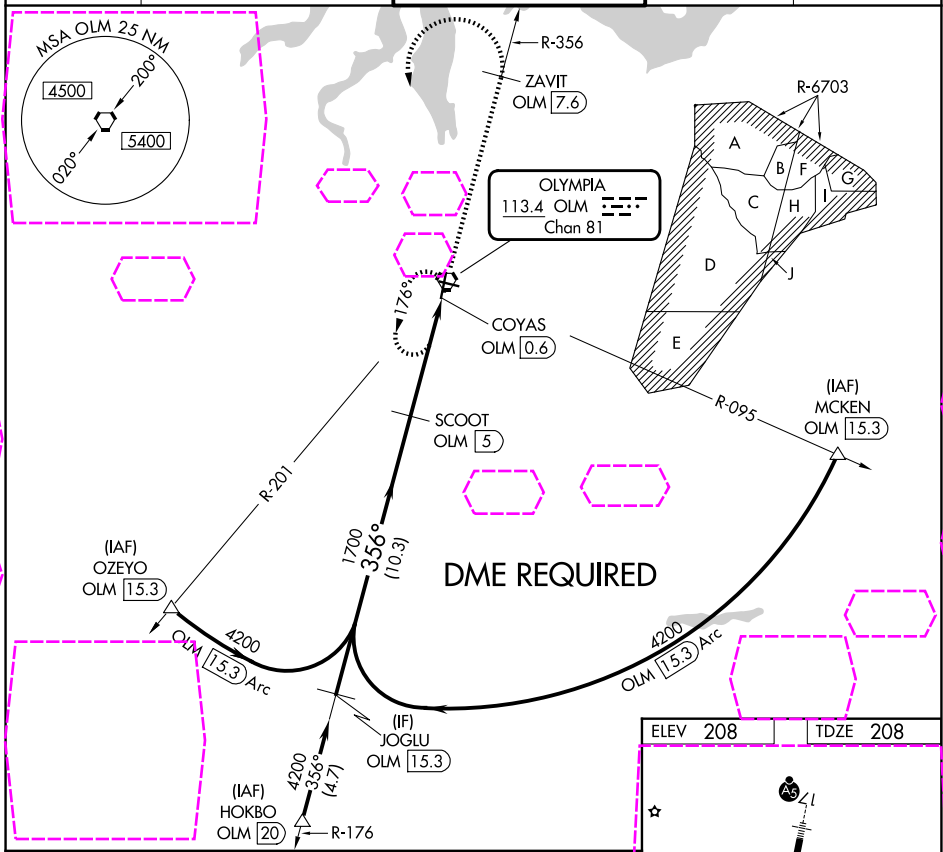
VOR RWY 35

OLYMPIA RGNL (OLM)

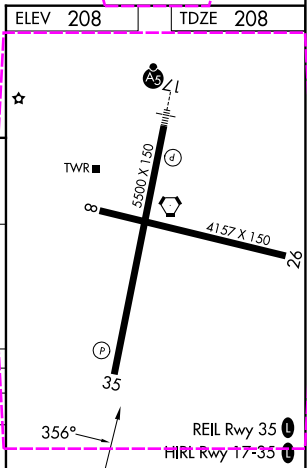
▼ Rwy 35 helicopter visibility reduction below 3/4 SM NA.
▲ DME required.

MISSED APPROACH: Climb to 4000 on OLM VORTAC R-356 to ZAVIT/OLM 7.6 DME then climbing left turn direct OLM VORTAC and hold.

ATIS 135.725	SEATTLE APP CON 121.1 290.9	OLYMPIA TOWER* 124.4 (CTAF) 254.25	GND CON 121.6	UNICOM 122.95
------------------------	---------------------------------------	---	-------------------------	-------------------------



JOGLU OLM 15.3	SCOOT OLM 5	4000 OLM R-356	ZAVIT OLM 7.6	OLM
4200	1700	OLM 2.5	OLM VORTAC	COYAS OLM 0.6
356°	3.13° TCH 50	10.3 NM	2.5 NM	1.8 NM
CATEGORY	A	B	C	D
S-35	840-1	632 (700-1)	840-1 3/4	632 (700-1 3/4)
CIRCLING	840-1	860-1	1020-2 1/2	1020-2 3/4
	632 (700-1)	652 (700-1)	812 (900-2 1/2)	812 (900-2 3/4)



NW-1, 27 NOV 2025 to 25 DEC 2025

NW-1, 27 NOV 2025 to 25 DEC 2025

OLYMPIA, WASHINGTON
Amdt 13 24MAY18

46°58'N-122°54'W

OLYMPIA RGNL (OLM) VOR RWY 35