

OLYMPIA, WASHINGTON

AL-645 (FAA)

25051

APP CRS	Rwy Idg	5500
356°	TDZE	208
	Apt Elev	208

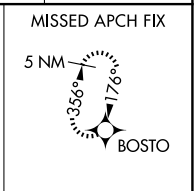
# RNAV (GPS) RWY 35

OLYMPIA RGNL (OLM)

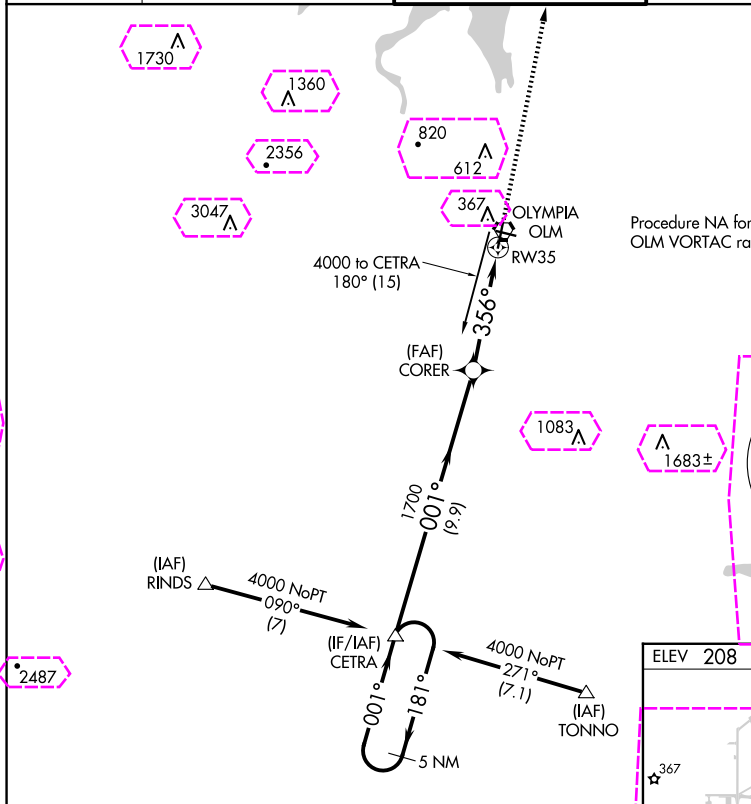
**▼** Rwy 35 helicopter visibility reduction below 3/4 SM NA.  
**▲** DME/DME RNP-0.3 NA.

MISSED APPROACH: Climb to 4000 direct BOSTO and hold, continue climb-in-hold to 4000.

ATIS <b>135.725</b>	SEATTLE APP CON <b>121.1 290.9</b>	OLYMPIA TOWER* <b>124.4 (CTAF) 254.25</b>	GND CON <b>121.6</b>	UNICOM <b>122.95</b>
------------------------	---------------------------------------	--	-------------------------	-------------------------

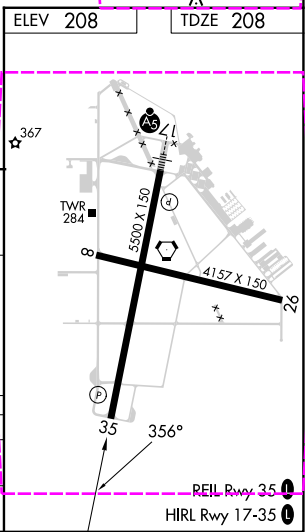
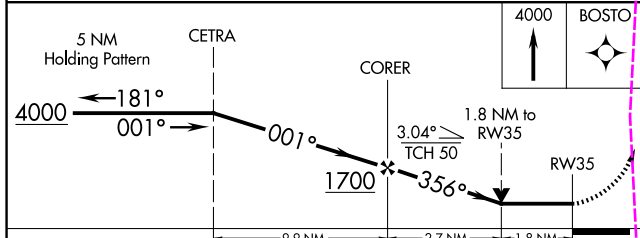


Procedure NA for arrival on OLM VORTAC radials 095 CW 250.



NW-1, 30 OCT 2025 to 27 NOV 2025

NW-1, 30 OCT 2025 to 27 NOV 2025



CATEGORY	A	B	C	D
LNAV MDA	840-1	632 (700-1)	840-1 3/4	632 (700-1 3/4)
<b>CIRCLING</b>	840-1 632 (700-1)	860-1 652 (700-1)	1020-2 1/2 812 (900-2 1/2)	1020-2 3/4 812 (900-2 3/4)

OLYMPIA, WASHINGTON  
Orig-B 24MAY18

46°58'N-122°54'W

# OLYMPIA RGNL (OLM) RNAV (GPS) RWY 35

OLYMPIA, WASHINGTON

AL-645 (FAA)

25331

APP CRS	Rwy Ldg	5500
356°	TDZE	208
	Apt Elev	208

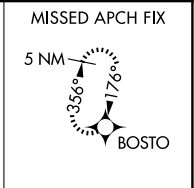
# RNAV (GPS) RWY 35

OLYMPIA RGNL (OLM)

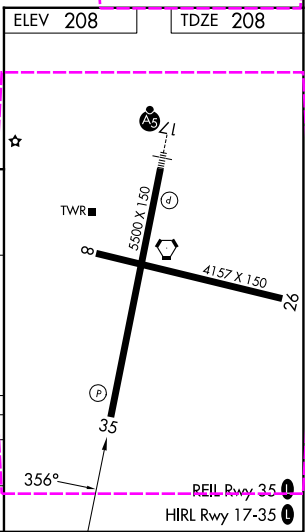
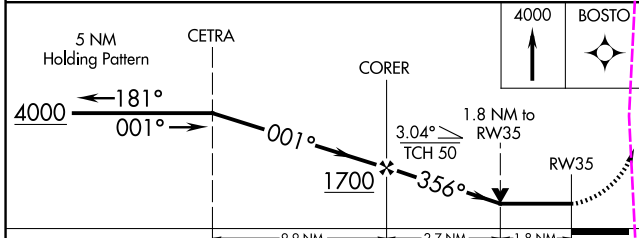
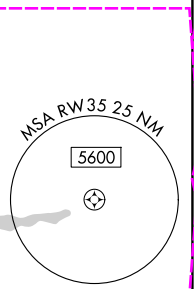
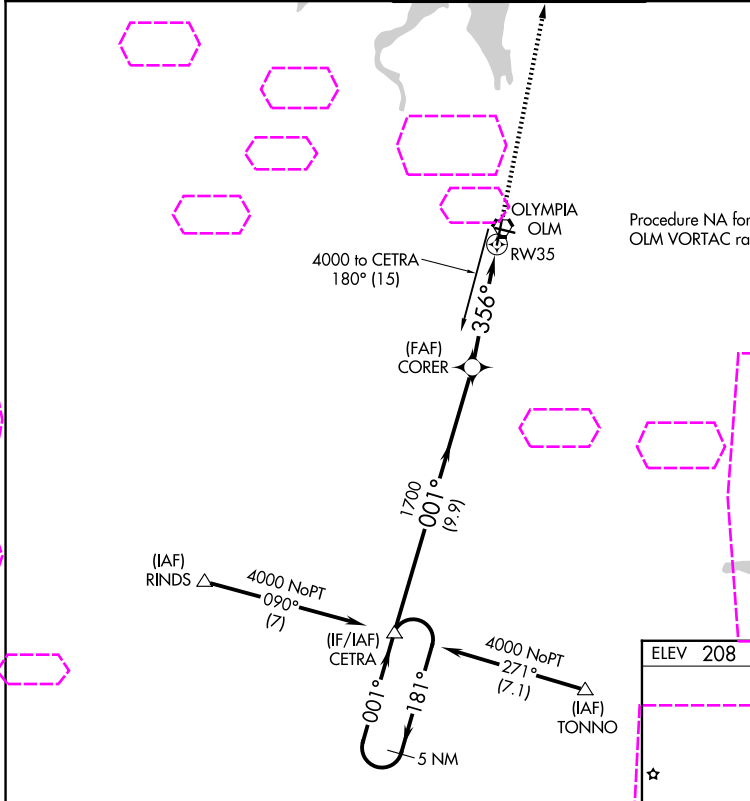
**⚠** Rwy 35 helicopter visibility reduction below 3/4 SM NA.  
DME/DME RNP-0.3 NA.

**⚠** MISSED APPROACH: Climb to 4000 direct BOSTO and hold, continue climb-in-hold to 4000.

ATIS <b>135.725</b>	SEATTLE APP CON <b>121.1 290.9</b>	OLYMPIA TOWER* <b>124.4 (CTAF) 254.25</b>	GND CON <b>121.6</b>	UNICOM <b>122.95</b>
------------------------	---------------------------------------	--	-------------------------	-------------------------



Procedure NA for arrival on OLM VORTAC radials 095 CW 250.



CATEGORY	A	B	C	D
LNAV MDA	840-1	632 (700-1)	840-1 3/4	632 (700-1 3/4)
<b>CIRCLING</b>	840-1 632 (700-1)	860-1 652 (700-1)	1020-2 1/2 812 (900-2 1/2)	1020-2 3/4 812 (900-2 3/4)

OLYMPIA, WASHINGTON  
Orig-B 24MAY18

46°58'N-122°54'W

# OLYMPIA RGNL (OLM) RNAV (GPS) RWY 35

NW-1, 27 NOV 2025 to 25 DEC 2025

NW-1, 27 NOV 2025 to 25 DEC 2025