

OLYMPIA, WASHINGTON

AL-645 (FAA)

25051

WAAS CH 45599 W17A	APP CRS 176°	Rwy Idg 5500 TDZE 207 Apt Elev 208
--	------------------------	---

RNAV (GPS) RWY 17

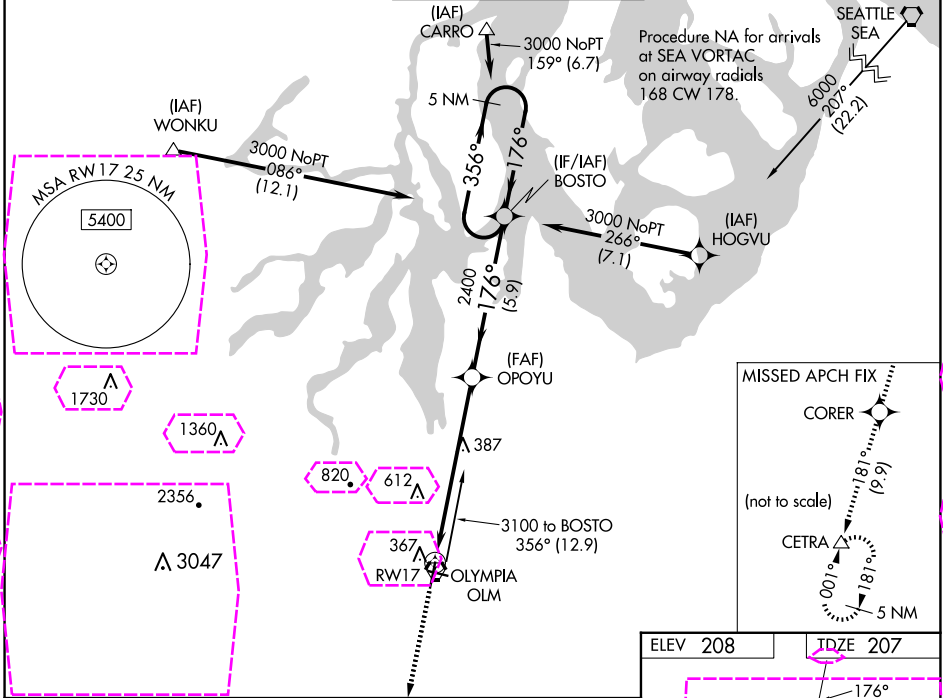
OLYMPIA RGNL (OLM)

⚠ For uncompensated Baro-VNAV systems, LNAV/VNAV NA below -9°C (16°F) or above 54°C (130°F). DME/DME RNP-0.3 NA.
⚠ For inop ALS; increase LNAV/VNAV visibility all Cats to 1½ SM.
 Increase LNAV Cats C/D to 1¾ SM.



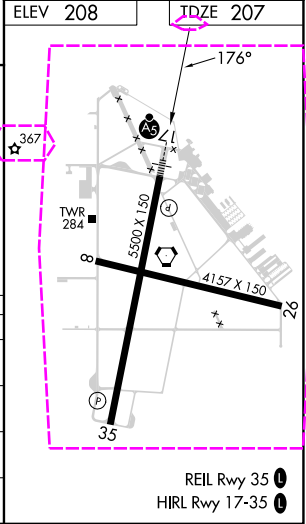
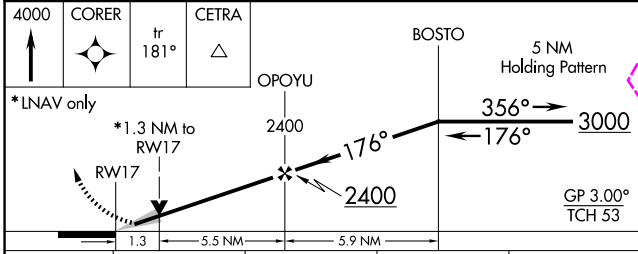
MISSED APPROACH: Climb to 4000 direct CORER and on track 181° to CETRA and hold, continue climb-in-hold to 4000.

ATIS 135.725	SEATTLE APP CON 121.1 290.9	OLYMPIA TOWER * 124.4 (CTAF) 254.25	GND CON 121.6	UNICOM 122.95
------------------------	---------------------------------------	---	-------------------------	-------------------------



NW-1, 30 OCT 2025 to 27 NOV 2025

NW-1, 30 OCT 2025 to 27 NOV 2025



CATEGORY	A	B	C	D
LPV DA		407-½	200 (200-½)	
LNAV/VNAV DA		629-¾	422 (500-¾)	
LNAV MDA	680-½	473 (500-½)	680-1	473 (500-1)
CIRCLING	720-1 512 (600-1)	860-1 652 (700-1)	1020-2½ 812 (900-2½)	1020-2¾ 812 (900-2¾)

OLYMPIA, WASHINGTON
Amdt 1 24MAY18

46°58'N-122°54'W

OLYMPIA RGNL (OLM) RNAV (GPS) RWY 17

REIL Rwy 35
HIRL Rwy 17-35

OLYMPIA, WASHINGTON

AL-645 (FAA)


25331

WAAS CH 45599 W17A	APP CRS 176°	Rwy Ldg 5500 TDZE 207 Apt Elev 208
--	------------------------	---

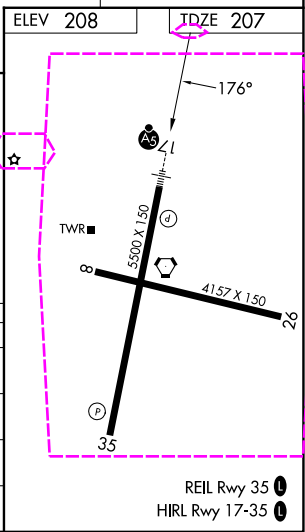
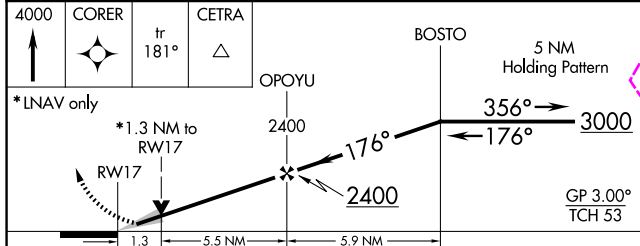
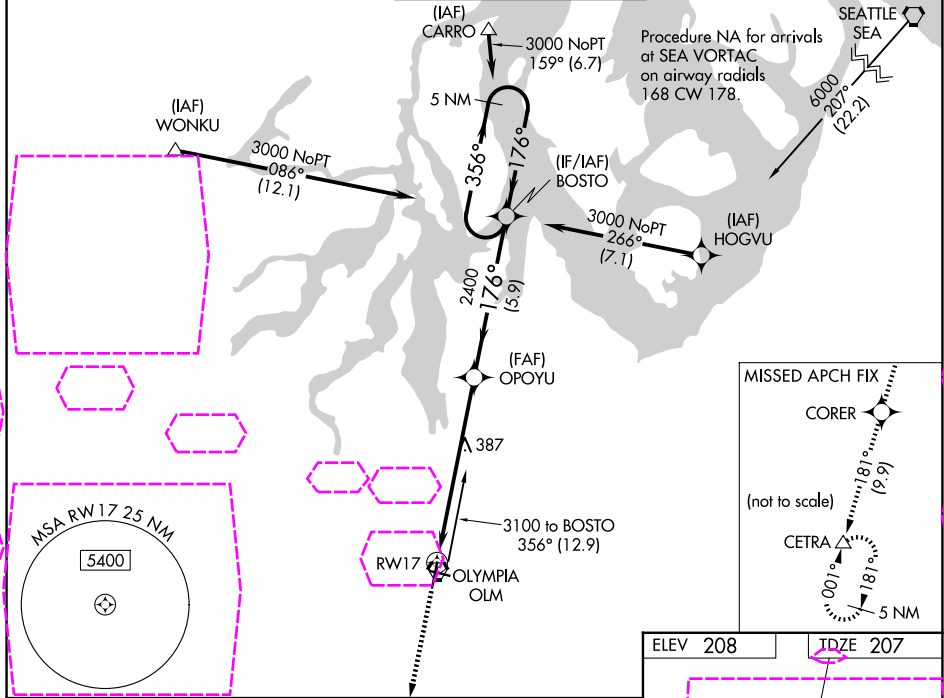
RNAV (GPS) RWY 17

OLYMPIA RGNL (OLM)

⚠ For uncompensated Baro-VNAV systems, LNAV/VNAV NA below -9°C (16°F) or above 54°C (130°F). DME/DME RNP-0.3 NA.
⚠ For inop ALS; increase LNAV/VNAV visibility all Cats to 1½ SM. Increase LNAV Cats C/D to 1¾ SM.

MALSR

MISSED APPROACH: Climb to 4000 direct CORER and on track 181° to CETRA and hold, continue climb-in-hold to 4000.

ATIS 135.725	SEATTLE APP CON 121.1 290.9	OLYMPIA TOWER * 124.4 (CTAF) 254.25	GND CON 121.6	UNICOM 122.95
------------------------	---------------------------------------	---	-------------------------	-------------------------



CATEGORY	A	B	C	D
LPV DA		407-½	200 (200-½)	
LNAV/VNAV DA		629-¾	422 (500-¾)	
LNAV MDA	680-½	473 (500-½)	680-1	473 (500-1)
CIRCLING	720-1 512 (600-1)	860-1 652 (700-1)	1020-2½ 812 (900-2½)	1020-2¾ 812 (900-2¾)

OLYMPIA, WASHINGTON
Amdt 1 24MAY18

46°58'N-122°54'W

OLYMPIA RGNL (OLM) RNAV (GPS) RWY 17

NW-1, 27 NOV 2025 to 25 DEC 2025

NW-1, 27 NOV 2025 to 25 DEC 2025

REIL Rwy 35
HIRL Rwy 17-35