

TOPEKA, KANSAS

AL-620 (FAA)

22363

WAAS CH 99634 W36A	APP CRS 357°	Rwy Idg 4331 TDZE 881 Apt Elev 881
--	------------------------	---

RNAV (GPS) RWY 36

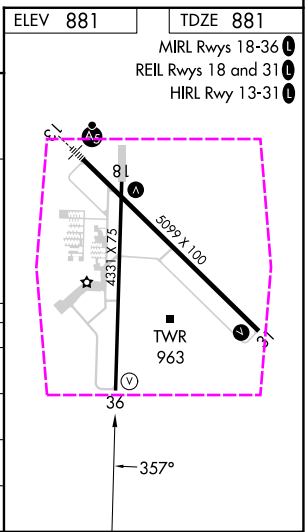
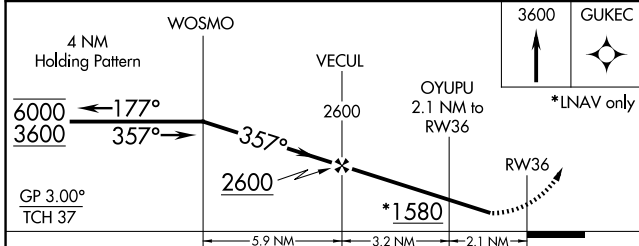
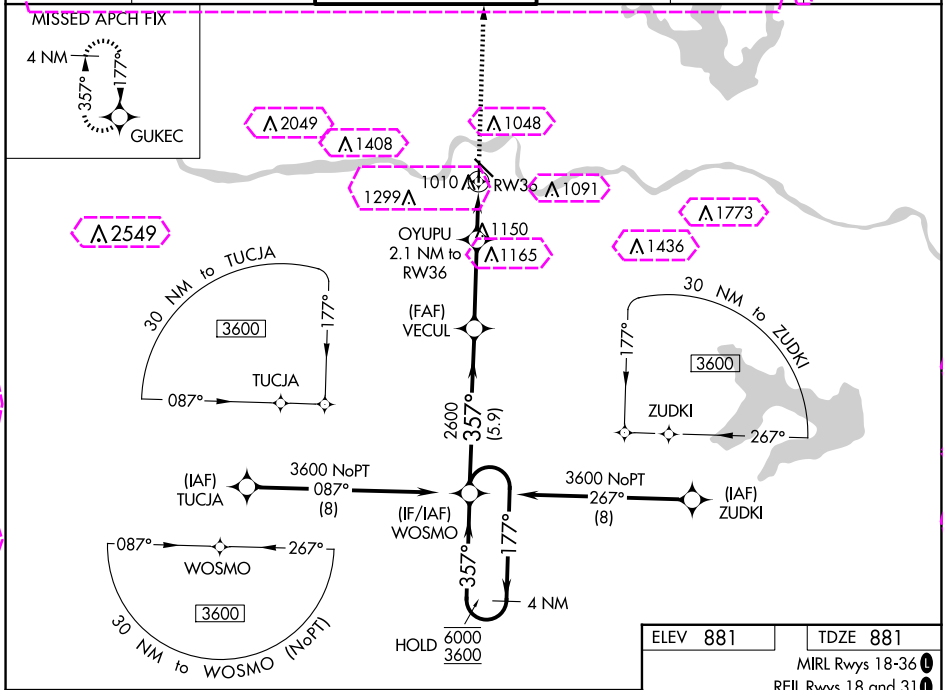
PHILIP BILLARD MUNI (TOP)

RNP APCH.

▼ Rwy 36 helicopter visibility reduction below 3/4 SM NA.
For uncompensated Baro-VNAV systems, LNAV/VNAV NA below -19°C or above 54°C.

MISSED APPROACH: Climb to 3600 direct GUKEC and hold.

ASOS 121.275	KANSAS CITY CENTER 123.8 343.7	TOPEKA TOWER * 118.7 (CTAF) 0 257.8	GND CON 121.9	CLNC DEL 121.9	UNICOM 122.95
------------------------	--	---	-------------------------	--------------------------	-------------------------



CATEGORY	A	B	C	D
LPV DA	1254-1¼	373 (400-1¼)		NA
LNAV/VNAV DA	1394-1¾	513 (600-1¾)		NA
LNAV MDA	1460-1	579 (600-1)	1460-1½ 579 (600-1½)	NA
CIRCLING	1460-1	579 (600-1)	1600-2 719 (800-2)	NA

TOPEKA, KANSAS
Amdt 1B 11OCT18

39°04'N-95°37'W

PHILIP BILLARD MUNI (TOP) RNAV (GPS) RWY 36

NC-2 30 OCT 2025 to 27 NOV 2025

NC-2 30 OCT 2025 to 27 NOV 2025

TOPEKA, KANSAS

AL-620 (FAA)

25331

WAAS CH 99634 W36A	APP CRS 357°	Rwy Ldg 4331 TDZE 881 Apt Elev 881
--	------------------------	---

RNAV (GPS) RWY 36

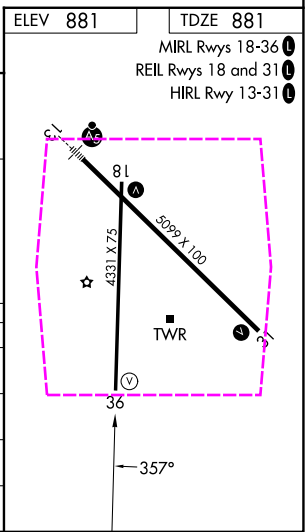
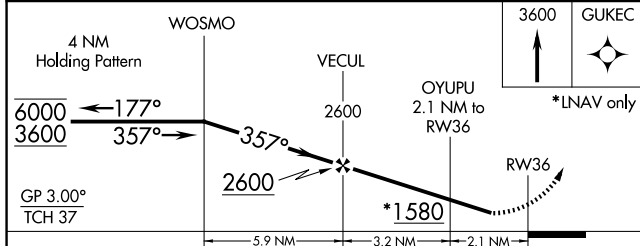
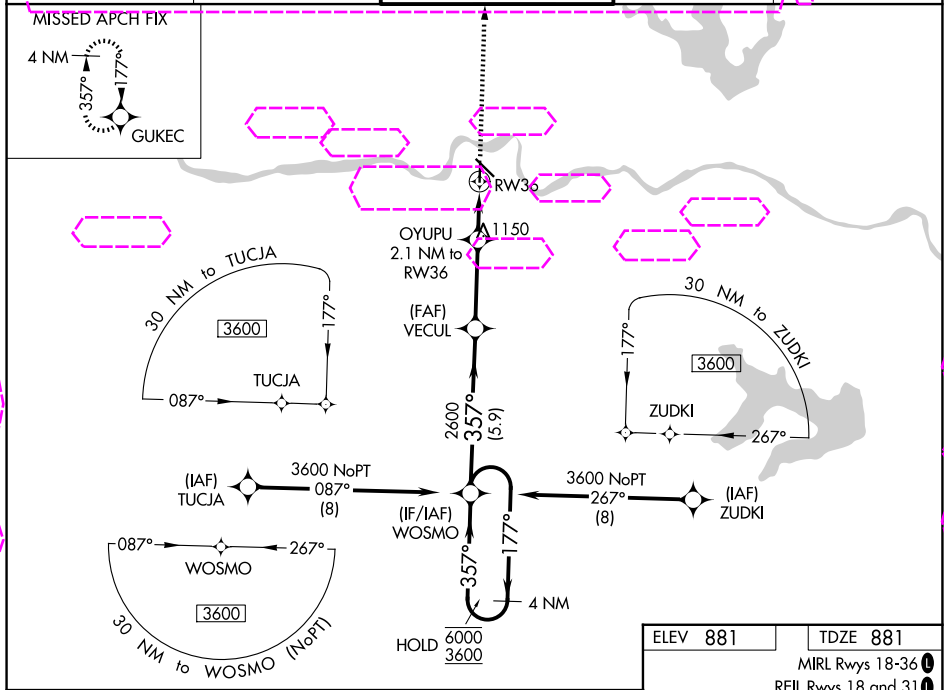
PHILIP BILLARD MUNI (TOP)

RNP APCH.

▼ Rwy 36 helicopter visibility reduction below 3/4 SM NA. For uncompensated Baro-VNAV systems, LNAV/VNAV NA below -19°C or above 54°C.

MISSED APPROACH: Climb to 3600 direct GUKEC and hold.

ASOS 121.275	KANSAS CITY CENTER 123.8 343.7	TOPEKA TOWER * 118.7 0 (CTAF) 257.8	GND CON 121.9	UNICOM 122.95
------------------------	--	---	-------------------------	-------------------------



CATEGORY	A	B	C	D
LPV DA	1254-1 1/4	373 (400-1 1/4)		NA
LNAV/VNAV DA	1394-1 3/4	513 (600-1 3/4)		NA
LNAV MDA	1460-1	579 (600-1)	1460-1 5/8 579 (600-1 5/8)	NA
CIRCLING	1460-1	579 (600-1)	1600-2 719 (800-2)	NA

TOPEKA, KANSAS
Amdt 1B 11OCT18

39°04'N-95°37'W

PHILIP BILLARD MUNI (TOP)

RNAV (GPS) RWY 36

NC-2, 27 NOV 2025 to 25 DEC 2025

NC-2, 27 NOV 2025 to 25 DEC 2025