

TOPEKA, KANSAS

AL-620 (FAA)

22363

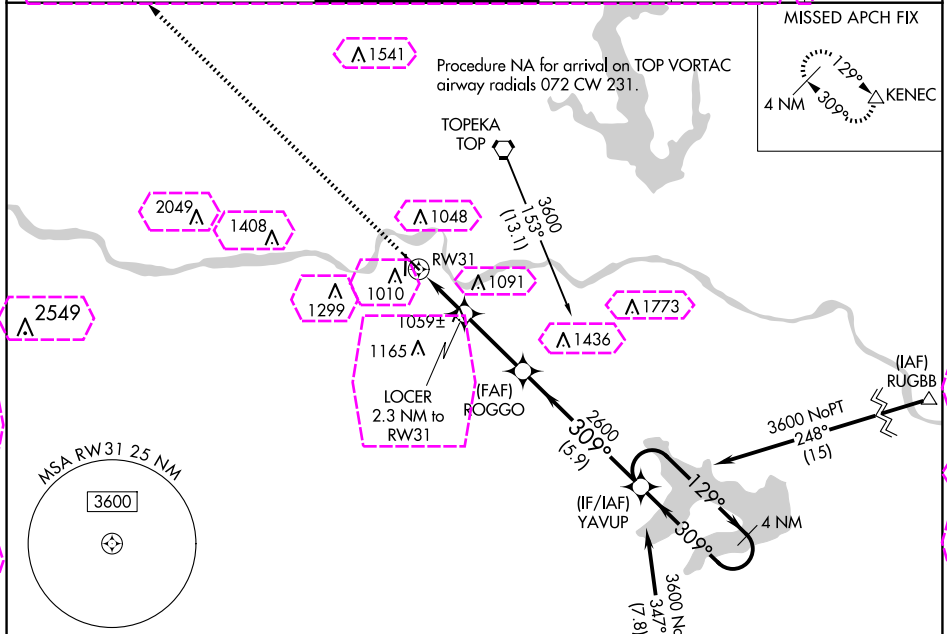
WAAS CH <b>69627</b> <b>W31A</b>	APP CRS <b>309°</b>	Rwy Idg TDZE Apt Elev	<b>5099</b> <b>880</b> <b>881</b>
--	------------------------	-----------------------------	---

# RNAV (GPS) RWY 31

PHILIP BILLARD MUNI (TOP)

DME/DME RNP-0.3 NA.		MISSED APPROACH: Climb to 3600 direct KENEC and hold.		
---------------------	--	---	--	--

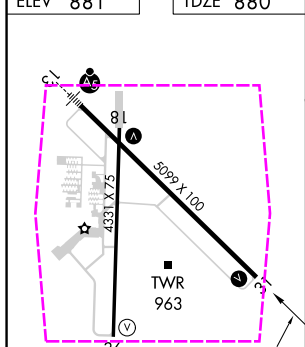
ASOS <b>121.275</b>	KANSAS CITY CENTER <b>123.8 343.7</b>	TOPEKA TOWER ★ <b>118.7 (CTAF) 257.8</b>	GND CON <b>121.9</b>	CLNC DEL <b>121.9</b>	UNICOM <b>122.95</b>
------------------------	--	---	-------------------------	--------------------------	-------------------------



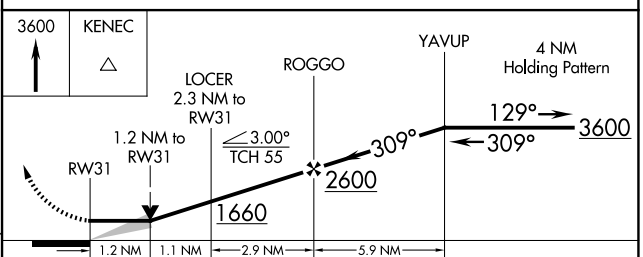
NC-2, 30 OCT 2025 to 27 NOV 2025

NC-2, 30 OCT 2025 to 27 NOV 2025

ELEV <b>881</b>	TDZE <b>880</b>
-----------------	-----------------



HIRL Rwy 13-31	REIL Rwy 18 and 31	MIRL Rwy 18-36
----------------	--------------------	----------------



CATEGORY	A	B	C	D
LP MDA	1320-1	440 (500-1)	1320-1 <sup>3</sup> / <sub>8</sub> 440 (500-1 <sup>3</sup> / <sub>8</sub> )	NA
LNAV MDA	1340-1	460 (500-1)	1340-1 <sup>3</sup> / <sub>8</sub> 460 (500-1 <sup>3</sup> / <sub>8</sub> )	NA
<b>CIRCLING</b>	1360-1 479 (500-1)	1440-1 559 (600-1)	1600-2 719 (800-2)	NA

TOPEKA, KANSAS  
Amdt 1B 29MAR18

39°04'N-95°37'W

# PHILIP BILLARD MUNI (TOP) RNAV (GPS) RWY 31

TOPEKA, KANSAS

AL-620 (FAA)

25331

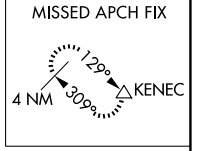
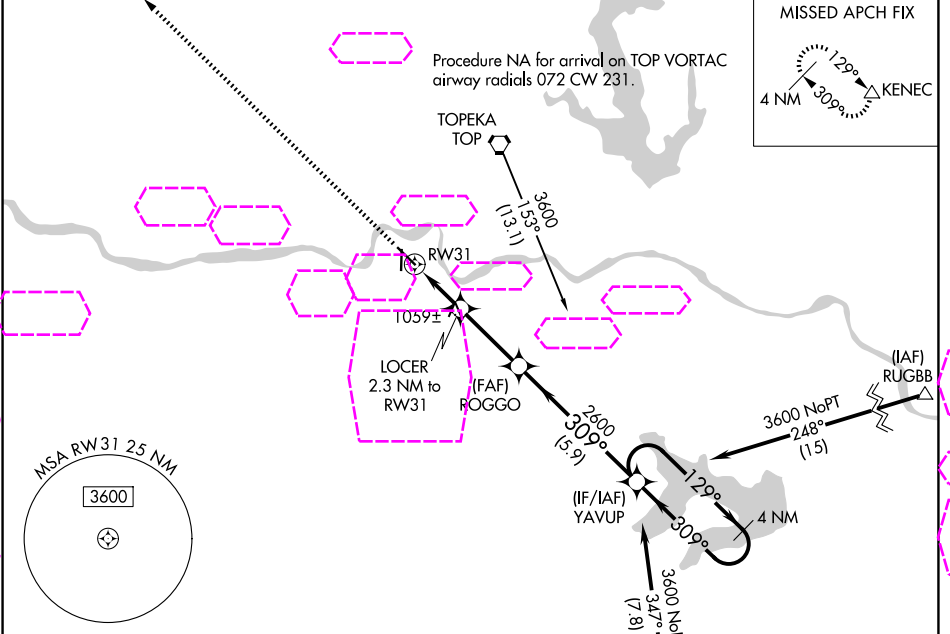
WAAS CH <b>69627</b> <b>W31A</b>	APP CRS <b>309°</b>	Rwy Ldg TDZE <b>880</b> Apt Elev <b>881</b>	<b>5099</b>
--	------------------------	---	-------------

# RNAV (GPS) RWY 31

PHILIP BILLARD MUNI (TOP)

DME/DME RNP-0.3 NA.	MISSED APPROACH: Climb to 3600 direct KENEC and hold.
---------------------	---

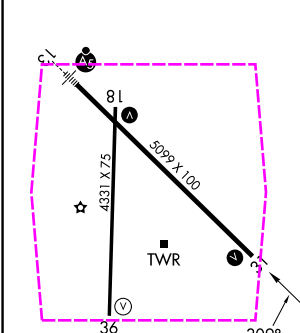
ASOS <b>121.275</b>	KANSAS CITY CENTER <b>123.8 343.7</b>	TOPEKA TOWER ★ <b>118.7</b> (CTAF) <b>257.8</b>	GND CON <b>121.9</b>	UNICOM <b>122.95</b>
------------------------	--	--	-------------------------	-------------------------



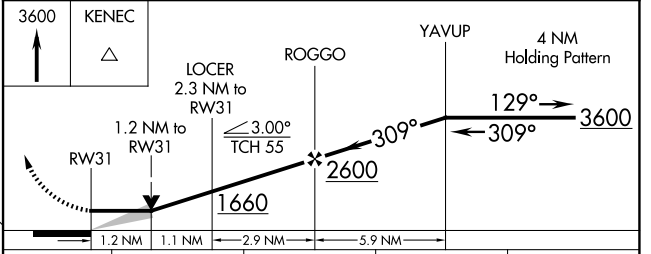
NC-2, 127 NOV 2025 to 25 DEC 2025

NC-2, 27 NOV 2025 to 25 DEC 2025

ELEV <b>881</b>	TDZE <b>880</b>
-----------------	-----------------



- HIRL Rwy 13-31
- REIL Rws 18 and 31
- MIRL Rws 18-36



CATEGORY	A	B	C	D
LP MDA	1320-1	440 (500-1)	1320-1 <sup>3</sup> / <sub>8</sub> 440 (500-1 <sup>3</sup> / <sub>8</sub> )	NA
LNAV MDA	1340-1	460 (500-1)	1340-1 <sup>3</sup> / <sub>8</sub> 460 (500-1 <sup>3</sup> / <sub>8</sub> )	NA
CIRCLING	1360-1 479 (500-1)	1440-1 559 (600-1)	1600-2 719 (800-2)	NA

TOPEKA, KANSAS  
Amdt 1B 29MAR18

39°04'N-95°37'W

# PHILIP BILLARD MUNI (TOP) RNAV (GPS) RWY 31