

TOPEKA, KANSAS

AL-620 (FAA)

22363

WAAS CH <b>53634</b> <b>W18A</b>	APP CRS <b>177°</b>	Rwy Idg <b>4331</b> TDZE <b>881</b> Apt Elev <b>881</b>
----------------------------------------	------------------------	---------------------------------------------------------------

# RNAV (GPS) RWY 18

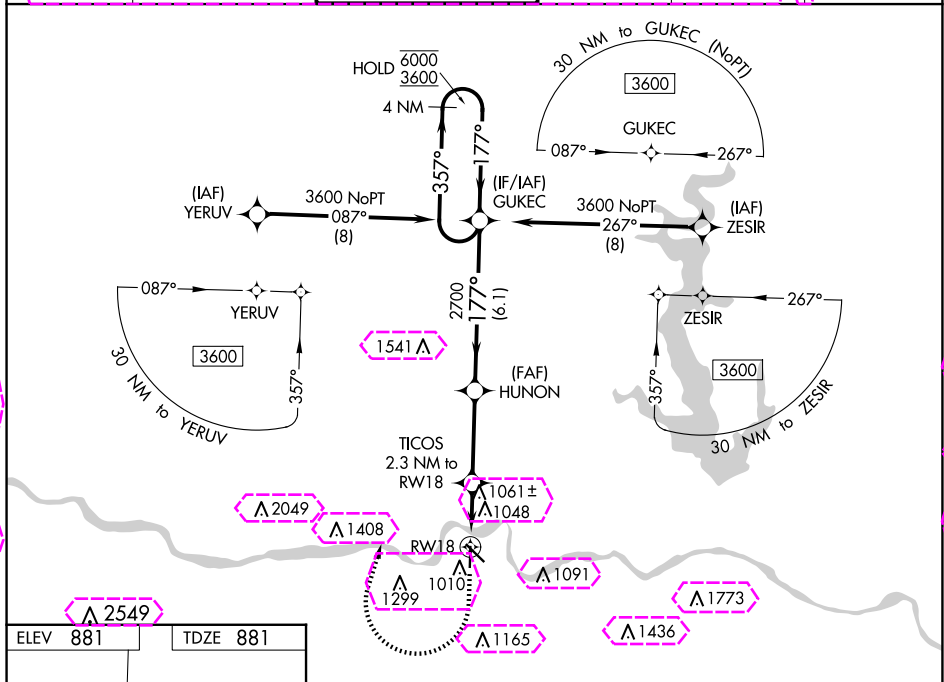
PHILIP BILLARD MUNI (TOP)

RNP APCH.

▼ Rwy 18 helicopter visibility reduction below 3/4 SM NA.  
For uncompensated Baro-VNAV systems, LNAV/VNAV NA below -19°C or above 54°C.

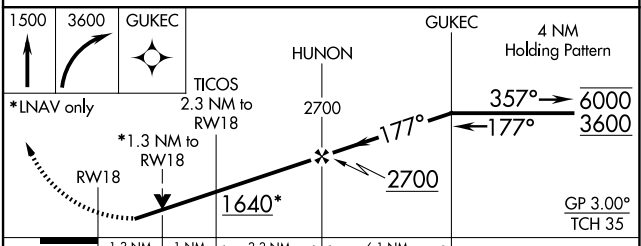
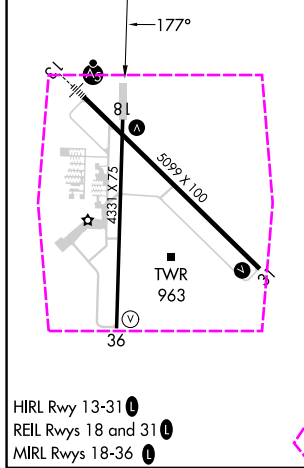
MISSED APPROACH: Climb to 1500 then climbing right turn to 3600 direct GUKEC and hold.

ASOS <b>121.275</b>	KANSAS CITY CENTER <b>123.8 343.7</b>	TOPEKA TOWER * <b>118.7 (CTAF) 0 257.8</b>	GND CON <b>121.9</b>	CLNC DEL <b>121.9</b>	UNICOM <b>122.95</b>
------------------------	------------------------------------------	-----------------------------------------------	-------------------------	--------------------------	-------------------------



NC-2, 30 OCT 2025 to 27 NOV 2025

NC-2, 30 OCT 2025 to 27 NOV 2025



CATEGORY	A	B	C	D
LPV DA	1174-1 293 (300-1)			NA
LNAV/VNAV DA	1340-1½ 459 (500-1½)			NA
LNAV MDA	1320-1 439 (500-1)		1320-1¼ 439 (500-1¼)	
<b>C</b> CIRCLING	1360-1 479 (500-1)	1440-1 559 (600-1)	1600-2 719 (800-2)	NA

TOPEKA, KANSAS  
Amdt 2B 11OCT18

39°04'N-95°37'W

# RNAV (GPS) RWY 18

PHILIP BILLARD MUNI (TOP)

