

TOPEKA, KANSAS

AL-620 (FAA)

22363

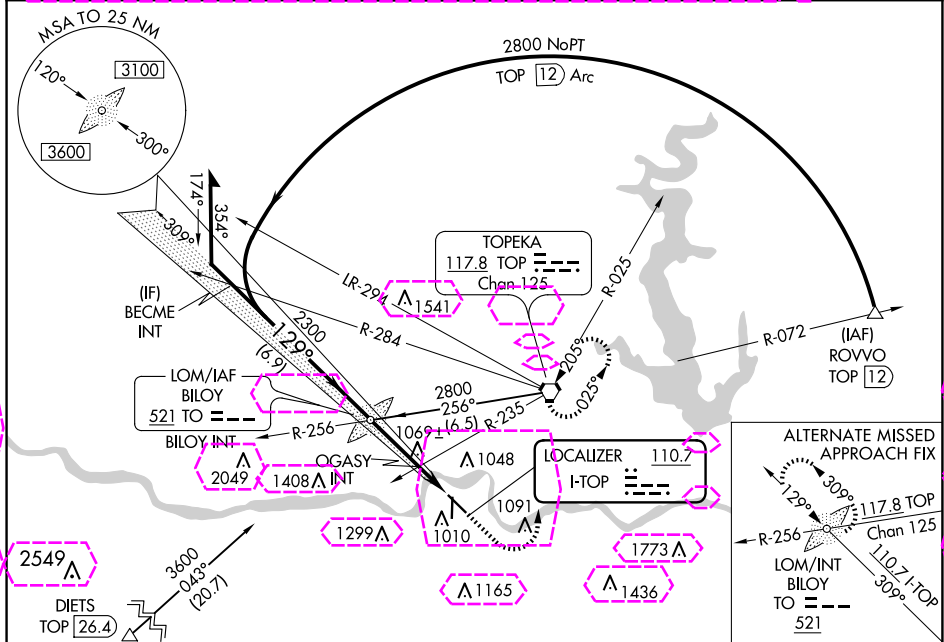
LOC I-TOP 110.7	APP CRS 129°	Rwy ldg 5099 TDZE 881 Apt Elev 881
---------------------------	------------------------	---

ILS or LOC RWY 13

PHILIP BILLARD MUNI (TOP)

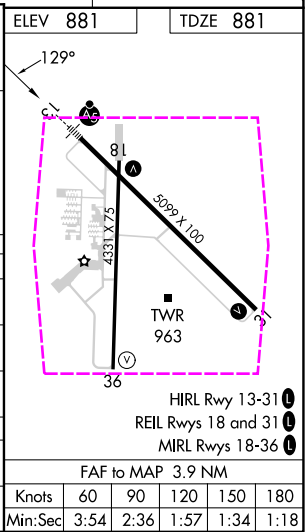
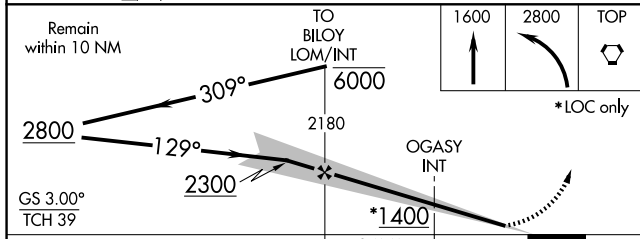
▲ For inop ALS, increase S-LOC 13 Cat C visibility to 1 3/8 SM. **MALSR** MISSED APPROACH: Climb to 1600 then climbing left turn to 2800 direct TOP VORTAC and hold.

ASOS 121.275	KANSAS CITY CENTER 123.8 343.7	TOPEKA TOWER * 118.7 (CTAF) 257.8	GND CON 121.9	CLNC DEL 121.9	UNICOM 122.95
------------------------	--	---	-------------------------	--------------------------	-------------------------



NC-2 30 OCT 2025 to 27 NOV 2025

NC-2 30 OCT 2025 to 27 NOV 2025



CATEGORY	A	B	C	D
S-ILS 13	1091-1/2 210 (300-1/2)			NA
S-LOC 13	1400-1/2	519 (600-1/2)	1400-1 519 (600-1)	NA
CIRCLING	1400-1 519 (600-1)	1440-1 559 (600-1)	1600-2 719 (800-2)	NA
OGASY FIX MINIMUMS				
S-LOC 13	1340-1/2	459 (500-1/2)	1340-7/8 459 (500-7/8)	NA
CIRCLING	1360-1 479 (500-1)	1440-1 559 (600-1)	1600-2 719 (800-2)	NA

TOPEKA, KANSAS
Amdt 33A 29MAR18

39°04'N-95°37'W

PHILIP BILLARD MUNI (TOP) ILS or LOC RWY 13

TOPEKA, KANSAS

AL-620 (FAA)

25331

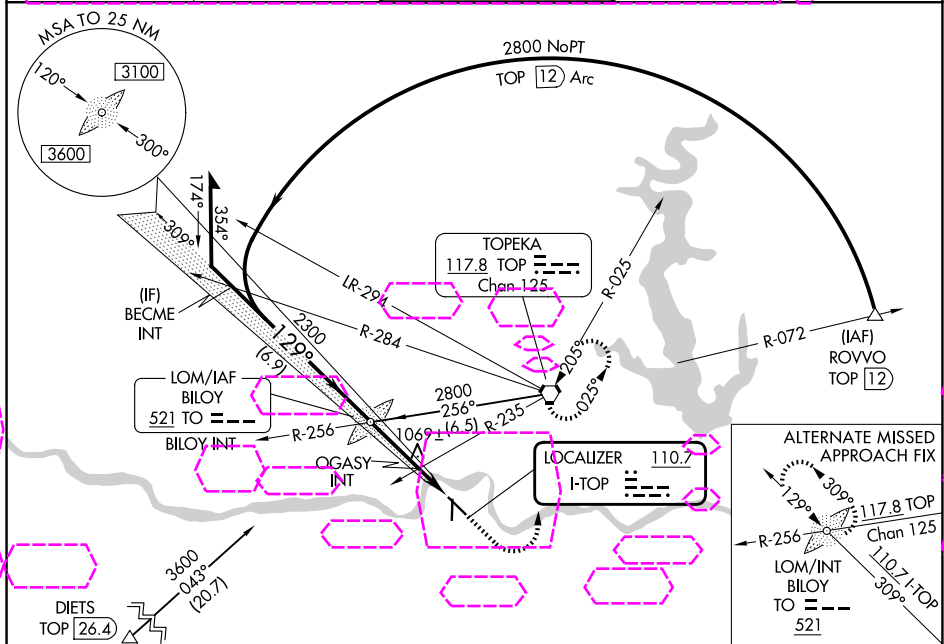
LOC I-TOP 110.7	APP CRS 129°	Rwy Ldg 5099 TDZE 881 Apt Elev 881
---------------------------	------------------------	---

ILS or LOC RWY 13

PHILIP BILLARD MUNI (TOP)

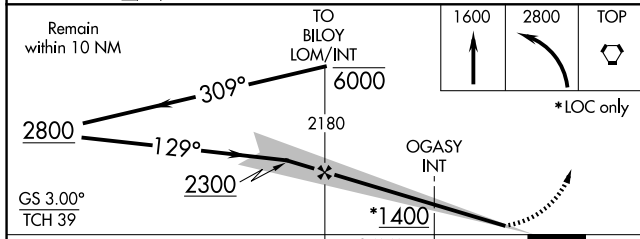
⚠ For inop ALS, increase S-LOC 13 Cat C visibility to 1 3/8 SM. **MALSR** MISSED APPROACH: Climb to 1600 then climbing left turn to 2800 direct TOP VORTAC and hold.

ASOS 121.275	KANSAS CITY CENTER 123.8 343.7	TOPEKA TOWER ★ 118.7 (CTAF) 257.8	GND CON 121.9	UNICOM 122.95
------------------------	--	--	-------------------------	-------------------------

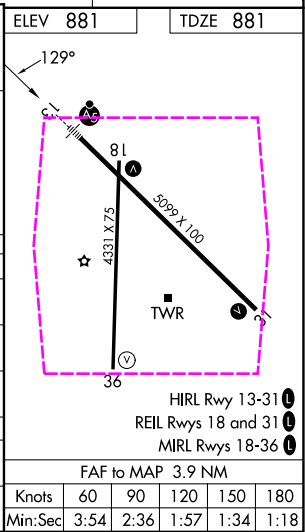


NC-2 27 NOV 2025 to 25 DEC 2025

NC-2 27 NOV 2025 to 25 DEC 2025



CATEGORY	A	B	C	D
S-ILS 13	1091-1/2 210 (300-1/2)			NA
S-LOC 13	1400-1/2 519 (600-1/2)		1400-1 519 (600-1)	NA
CIRCLING	1400-1 519 (600-1)	1440-1 559 (600-1)	1600-2 719 (800-2)	NA
OGASY FIX MINIMUMS				
S-LOC 13	1340-1/2 459 (500-1/2)		1340-7/8 459 (500-7/8)	NA
CIRCLING	1360-1 479 (500-1)	1440-1 559 (600-1)	1600-2 719 (800-2)	NA



TOPEKA, KANSAS
Amdt 33A 29MAR18

39°04'N-95°37'W

PHILIP BILLARD MUNI (TOP) ILS or LOC RWY 13

FAF to MAP 3.9 NM					
Knots	60	90	120	150	180
Min:Sec	3:54	2:36	1:57	1:34	1:18