

NIAGARA FALLS, NEW YORK

AL-614 (FAA)

24305

WAAS CH 45532 W24A	APP CRS 240°	Rwy ldg 5108 TDZE 592 Apt Elev 592
--------------------------	-----------------	---

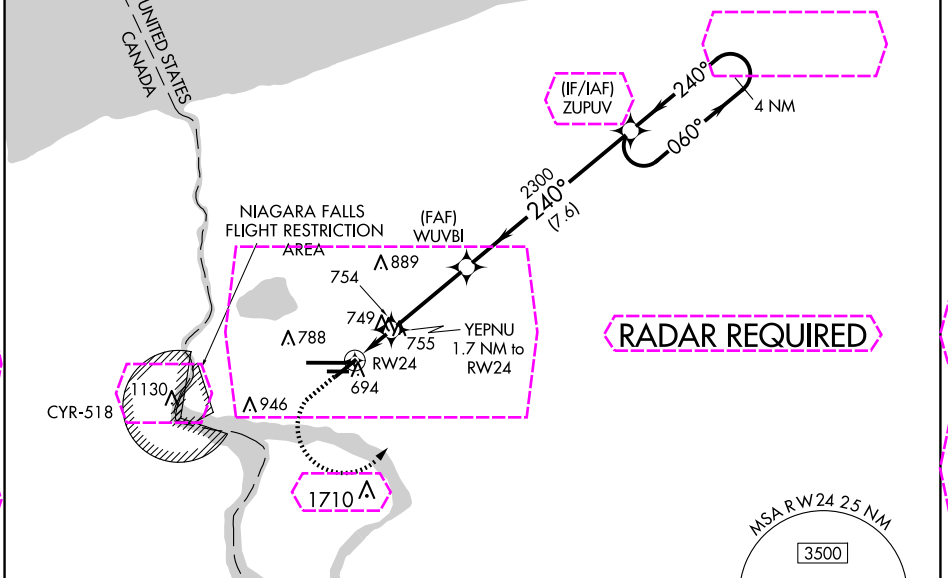
RNAV (GPS) Z RWY 24

NIAGARA FALLS INTL (IAG)

⚠ DME/DME RNP-0.3 NA. When local altimeter setting not received, use Buffalo Niagara Intl altimeter setting and increase all MDA 60 feet; increase LP Cats C and D visibility 1/4 SM, LNAV Cats C and D visibility 1/4 SM, and Circling Cat C and D visibility 1/4 SM. Rwy 6, 10R, 24, 28L helicopter visibility reduction below 1 SM NA. Straight-in Rwy 24 NA at night, Circling Rwy 6, 10R, 24, 28L NA at night. *Missed approach requires a minimum climb of 265 feet per NM to 2120; if unable to meet climb gradient, see RNAV (GPS) Y RWY 24.

MISSED APPROACH: Climb to 1400 then climbing left turn to 3600 direct ZUPUV and hold.

ATIS 120.8 269.4	BUFFALO APP CON 126.5 317.6	NIAGARA TOWER* 118.5 (CTAF) 0 349.0	GND CON 125.3 275.8	CLNC DEL 119.25 251.1	UNICOM 122.95
---------------------	--------------------------------	--	------------------------	--------------------------	------------------



NE-2, 30 OCT 2025 to 27 NOV 2025

NE-2, 30 OCT 2025 to 27 NOV 2025

ELEV 592	D	TDZE 592
----------	---	----------

	1400	3600	ZUPUV	4 NM Holding Pattern																				
<table border="1"> <thead> <tr> <th>CATEGORY</th> <th>A</th> <th>B</th> <th>C</th> <th>D</th> </tr> </thead> <tbody> <tr> <td>LP MDA*</td> <td>1000-1</td> <td>408 (500-1)</td> <td>1000-1 1/8</td> <td>408 (500-1 1/8)</td> </tr> <tr> <td>LNAV MDA*</td> <td>1020-1</td> <td>428 (500-1)</td> <td>1020-1 1/4</td> <td>428 (500-1 1/4)</td> </tr> <tr> <td>C CIRCLING</td> <td>1100-1</td> <td>508 (600-1)</td> <td>1280-2 688 (700-2)</td> <td>1280-2 1/4 688 (700-2 1/4)</td> </tr> </tbody> </table>	CATEGORY	A	B	C	D	LP MDA*	1000-1	408 (500-1)	1000-1 1/8	408 (500-1 1/8)	LNAV MDA*	1020-1	428 (500-1)	1020-1 1/4	428 (500-1 1/4)	C CIRCLING	1100-1	508 (600-1)	1280-2 688 (700-2)	1280-2 1/4 688 (700-2 1/4)	<p>TDZ/CL Rwy 28R 1180</p> <p>REIL Rws 6, 10R, 24, and 28L 10L-28R</p> <p>MIRL Rws 6-24 and 10R-28L 651</p>			
CATEGORY	A	B	C	D																				
LP MDA*	1000-1	408 (500-1)	1000-1 1/8	408 (500-1 1/8)																				
LNAV MDA*	1020-1	428 (500-1)	1020-1 1/4	428 (500-1 1/4)																				
C CIRCLING	1100-1	508 (600-1)	1280-2 688 (700-2)	1280-2 1/4 688 (700-2 1/4)																				

NIAGARA FALLS, NEW YORK
Orig-B 18JUN20

43°06'N-78°57'W

NIAGARA FALLS INTL (IAG)

RNAV (GPS) Z RWY 24

NIAGARA FALLS, NEW YORK

AL-614 (FAA)

25331

WAAS CH 45532 W24A	APP CRS 240°	Rwy Ldg TDZE 592 Apt Elev 592
--	------------------------	---

RNAV (GPS) Z RWY 24

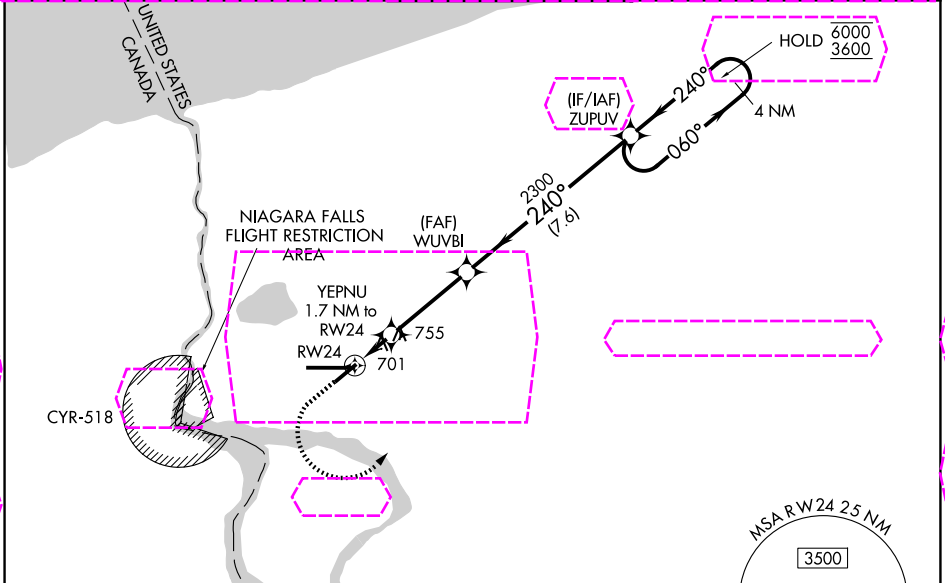
NIAGARA FALLS INTL (IAG)

RNP APCH - GPS.

▽
▲ Rwy 24 helicopter visibility reduction below $\frac{3}{4}$ SM NA. Circling Rwy 6 NA at night.

MISSED APPROACH: Climb to 1400, then climbing left turn to 3600 direct ZUPLV and hold.
*Missed approach requires minimum climb of 265 feet per NM to 2120; if unable to meet climb gradient, see RNAV (GPS) Y Rwy 24.

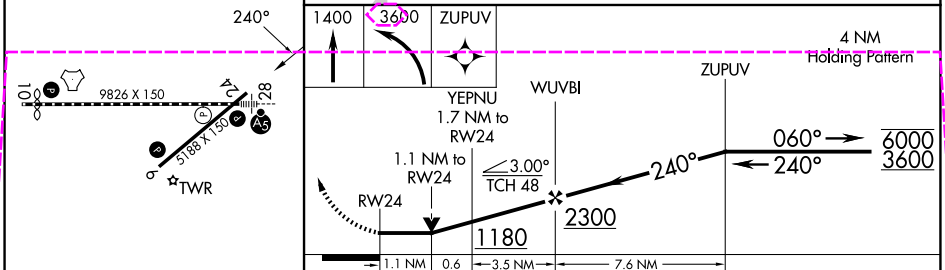
ATIS 120.8 269.4	BUFFALO APP CON 126.5 317.6	NIAGARA TOWER★ 118.5 (CTAF) 0 349.0	GND CON 125.3 275.8	UNICOM 122.95
----------------------------	---------------------------------------	---	-------------------------------	-------------------------



NE-2, 127 NOV 2025 to 25 DEC 2025

NE-2, 27 NOV 2025 to 25 DEC 2025

ELEV 592	D	TDZE 592
----------	----------	----------



REIL Rwy 6 and 24	1
TDZL/RCLS Rwy 28	1
RCLS Rwy 10	1
HIRL Rwy 10-28	1
MIRL Rwy 6-24	1

CATEGORY	A	B	C	D
LP MDA	1000-1	408 (500-1)	1000-1½	408 (500-1½)
LNAV MDA	1020-1	428 (500-1)	1020-1¼	428 (500-1¼)
CIRCLING	1100-1	508 (600-1)	1280-2 688 (700-2)	1280-2½ 688 (700-2½)

NIAGARA FALLS, NEW YORK
Amdt 1 27NOV25

43°07'N-78°57'W

RNAV (GPS) Z RWY 24

NIAGARA FALLS INTL (IAG)