

NIAGARA FALLS, NEW YORK

AL-614 (FAA)

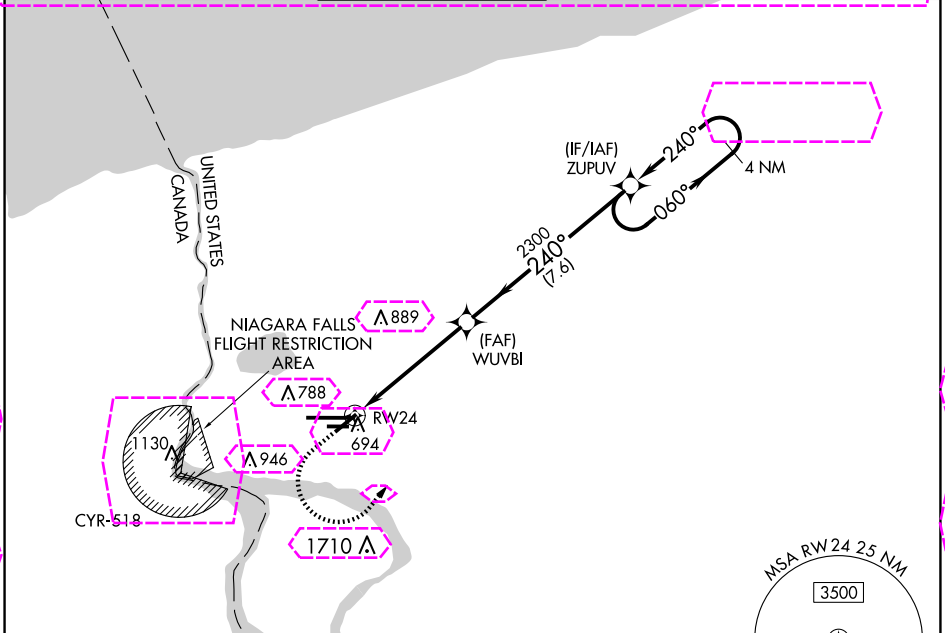
24305

WAAS CH 97333 W24B	APP CRS 240°	Rwy ldg 5108 TDZE 592 Apt Elev 592
--	------------------------	---

RNAV (GPS) Y RWY 24

NIAGARA FALLS INTL (IAG)

<p>⚠ DME/DME RNP-0.3 NA. When local altimeter setting not received, use Buffalo Niagara Intl altimeter setting and increase all MDA 60 feet and increase LP Cats C and D visibility $\frac{1}{8}$ mile and Circling Cats A and D visibility $\frac{1}{4}$ mile. Rwy 6, 10R, 24, 28L helicopter visibility reduction below 1 SM NA. Straight-in Rwy 24 NA at night, Circling Rwy 6, 10R, 24, 28L NA at night.</p>		<p>MISSED APPROACH: Climb to 1400 then climbing left turn to 3600 direct ZUPOV and hold.</p>			
ATIS 120.8 269.4	BUFFALO APP CON 126.5 317.6	NIAGARA TOWER* 118.5 (CTAF) 0 349.0	GND CON 125.3 275.8	CLNC DEL 119.25 251.1	UNICOM 122.95

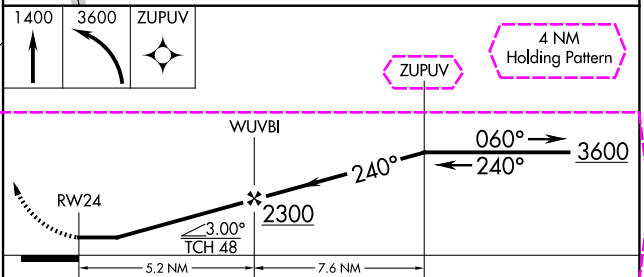
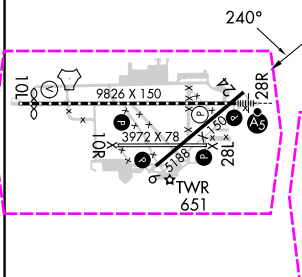


NE-2, 30 OCT 2025 to 27 NOV 2025

NE-2, 30 OCT 2025 to 27 NOV 2025

ELEV 592	D	TDZE 592
----------	----------	----------

RADAR REQUIRED



CATEGORY		A	B	C	D
LP	MDA	1180-1	588 (600-1)	1180-1 $\frac{3}{4}$	588 (600-1 $\frac{3}{4}$)
LNAV	MDA	1360-1 768 (800-1)	1360-1 $\frac{1}{4}$ 768 (800-1 $\frac{1}{4}$)	1360-2 $\frac{1}{2}$	768 (800-2 $\frac{1}{2}$)
C	CIRCLING	1360-1 768 (800-1)	1360-1 $\frac{1}{4}$ 768 (800-1 $\frac{1}{4}$)	1360-2 $\frac{1}{2}$	768 (800-2 $\frac{1}{2}$)

NIAGARA FALLS, NEW YORK
Orig-B 18JUN20

43°06'N-78°57'W

NIAGARA FALLS INTL (IAG) RNAV (GPS) Y RWY 24

NIAGARA FALLS, NEW YORK

AL-614 (FAA)

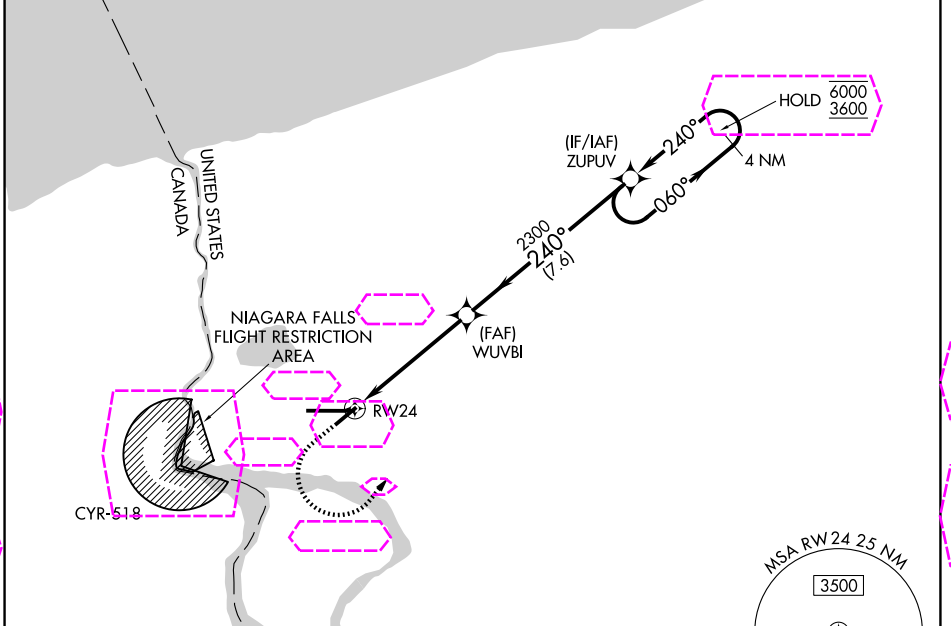
25331

WAAS CH 97333 W24B	APP CRS 240°	Rwy Ldg 5108 TDZE 592 Apt Elev 592
--	------------------------	---

RNAV (GPS) Y RWY 24

NIAGARA FALLS INTL (IAG)

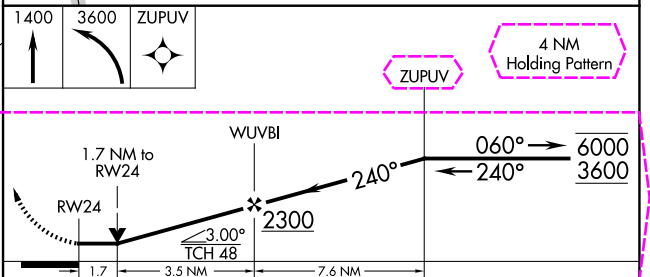
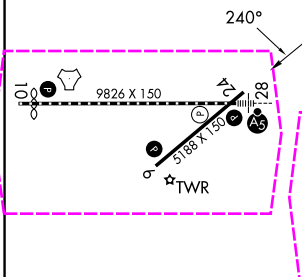
RNP APCH - GPS		MISSED APPROACH: Climb to 1400, then climbing left turn to 3600 direct ZUPOV and hold.	
<p>▼ ▲ Rwy 24 helicopter visibility reduction below 3/4 SM NA. Circling Rwy 6 NA at night.</p>			
ATIS 120.8 269.4	BUFFALO APP CON 126.5 317.6	NIAGARA TOWER ★ 118.5 (CTAF) 0 349.0	GND CON 125.3 275.8
		UNICOM 122.95	



NE-2, 127 NOV 2025 to 25 DEC 2025

NE-2, 27 NOV 2025 to 25 DEC 2025

ELEV 592	D	TDZE 592
----------	----------	----------



CATEGORY		A	B	C	D
REIL Rwy 6 and 24	LP MDA	1180-1	588 (600-1)	1180-1 3/4	588 (600-1 3/4)
TDZL/RCLS Rwy 28	LNAV MDA	1360-1	1360-1 1/4	1360-2 1/2	768 (800-2 1/2)
RCLS Rwy 10	CIRCLING	768 (800-1)	768 (800-1 1/4)	1360-1 1/4	768 (800-2 1/2)
HIRL Rwy 10-28		1360-1	1360-1 1/4	1360-2 1/2	768 (800-2 1/2)
MIRL Rwy 6-24		768 (800-1)	768 (800-1 1/4)		

NIAGARA FALLS, NEW YORK
Amdt 1 27NOV25

43°07'N-78°57'W

RNAV (GPS) Y RWY 24