

NIAGARA FALLS, NEW YORK

AL-614 (FAA)

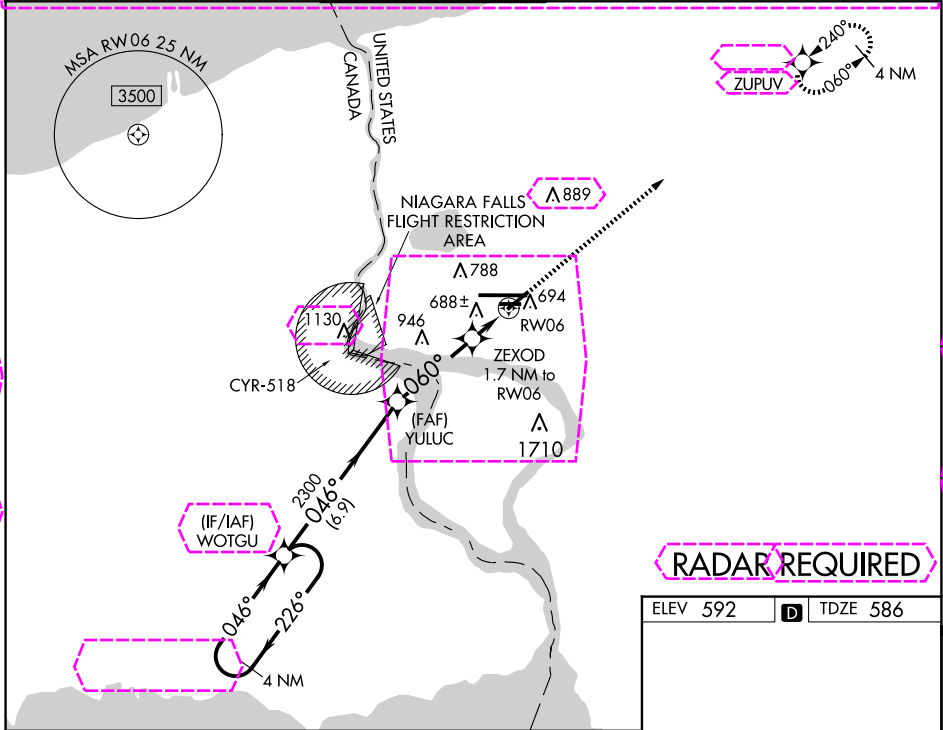
24305

WAAS CH 90132 W06A	APP CRS 060°	Rwy ldg 5188 TDZE 586 Apt Elev 592
--	------------------------	---

RNAV (GPS) RWY 6

NIAGARA FALLS INTL (IAG)

RNP APCH		Baro-VNAV NA when using Buffalo Niagara Intl altimeter setting. For uncompensated Baro-VNAV systems, LNAV/VNAV NA below -18°C (0°F) or above 54°C (130°F). When local altimeter setting not received, use Buffalo Niagara Intl altimeter setting and increase all DA 51 feet and all MDA 60 feet, increase LNAV Cat C and D visibility 1/8 SM and Circling Cat C and D 1/4 SM. Rwy 6, 10R, 24, 28L helicopter visibility reduction below 1 SM NA. Straight-in Rwy 6 NA at night, Circling Rwy 6, 10R, 24, 28L NA at night.				MISSED APPROACH: Climb to 3600 direct ZUPOV and hold.	
ATIS 120.8 269.4	BUFFALO APP CON 126.5 317.6	NIAGARA TOWER* 118.5 (CTAF) 0 349.0	GND CON 125.3 275.8	CLNC DEL 119.25 251.1	UNICOM 122.95		

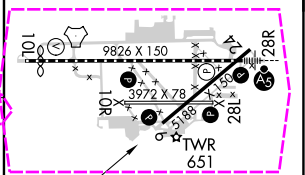
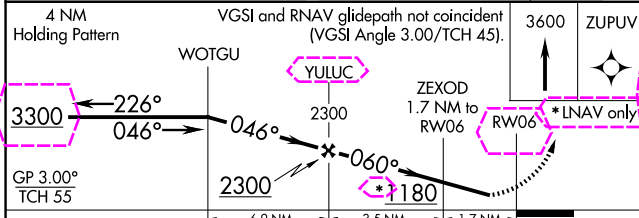


NE-2, 30 OCT 2025 to 27 NOV 2025

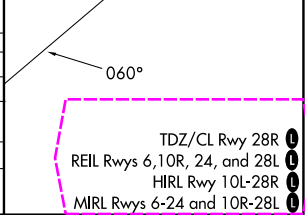
NE-2, 30 OCT 2025 to 27 NOV 2025

RADAR REQUIRED

ELEV 592	TDZE 586
----------	----------



CATEGORY	A	B	C	D
LPV DA		864-1	278 (300-1)	
LNAV/VNAV DA		849-1	263 (300-1)	
LNAV MDA		940-1	354 (400-1)	
CIRCLING	1100-1	508 (600-1)	1280-2 688 (700-2)	1280-2 1/4 688 (700-2 1/4)



NIAGARA FALLS, NEW YORK
Orig-B 18JUN20

43°06'N-78°57'W

NIAGARA FALLS INTL (IAG) RNAV (GPS) RWY 6

TDZ/CL Rwy 28R	0
REIL Rwys 6, 10R, 24, and 28L	0
HIRL Rwy 10L-28R	0
MIRL Rwys 6-24 and 10R-28L	0

NIAGARA FALLS, NEW YORK

AL-614 (FAA)

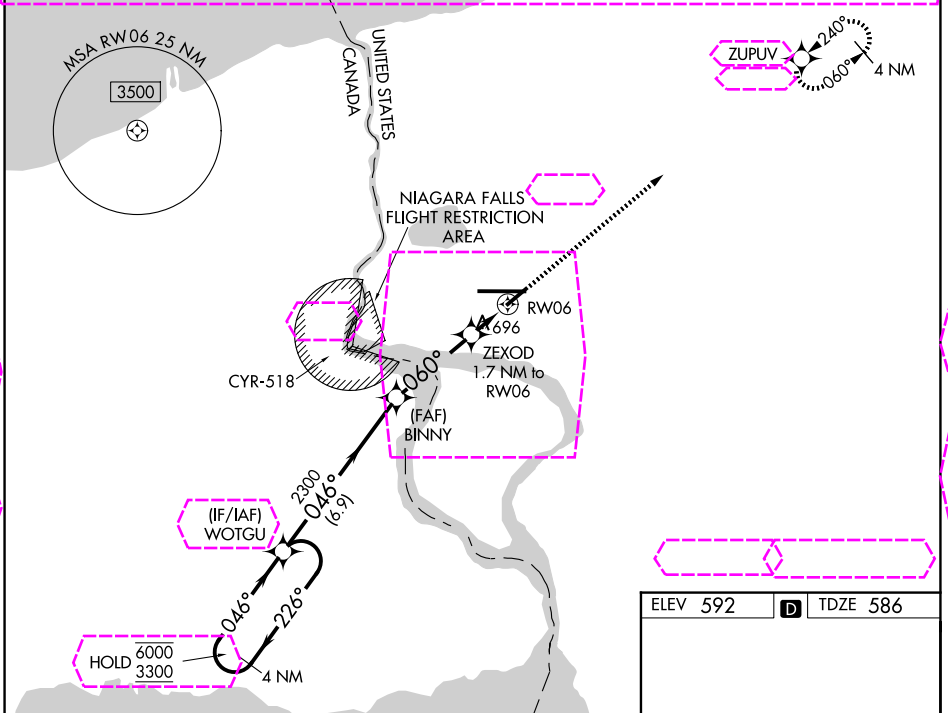
25331

WAAS CH 90132 W06A	APP CRS 060°	Rwy Ldg TDZE 586 Apt Elev 592
--	------------------------	---

RNAV (GPS) RWY 6

NIAGARA FALLS INTL (IAG)

RNP APCH - GPS.		<p>▼ For uncompensated Baro-VNAV systems, LNAV/VNAV NA below -17°C or above 54°C. ▲ Rwy 6 helicopter visibility reduction below 1 SM NA. Rwy 6 Straight-in and Circling minimums NA at night.</p>		
ATIS 120.8 269.4	BUFFALO APP CON 126.5 317.6	NIAGARA TOWER ★ 118.5 (CTAF) 0 349.0	GND CON 125.3 275.8	UNICOM 122.95



NE-2, 127 NOV 2025 to 25 DEC 2025

NE-2, 27 NOV 2025 to 25 DEC 2025

ELEV 592	D	TDZE 586
----------	----------	----------

REIL Rwy 6 and 24	1
TDZL/RCLS Rwy 28	1
RCLS Rwy 10	1
HIRL Rwy 10-28	1
MIRL Rwy 6-24	1

4 NM Holding Pattern	VGSi and RNAV glidepath not coincident (VGSi Angle 3.00/TCH 45).				3600 ZUPUV
WOTGU	BINNY	ZEXOD	RW06		
6000 3300	2300	180			
GP 3.00° TCH 55	6.9 NM	3.5 NM	1.7 NM		
CATEGORY	A	B	C	D	
LPV DA		864-1	278 (300-1)		
LNAV/VNAV DA		849-1	263 (300-1)		
LNAV MDA	1000-1	414 (500-1)	1000-1½	414 (500-1½)	
CIRCLING	1100-1	508 (600-1)	1280-2 688 (700-2)	1280-2¼ 688 (700-2¼)	

NIAGARA FALLS, NEW YORK
Amdt 1 27NOV25

43°07'N-78°57'W

NIAGARA FALLS INTL (IAG) RNAV (GPS) RWY 6