

(SEA 9 SEA) 24361

SEATTLE NINE DEPARTURE

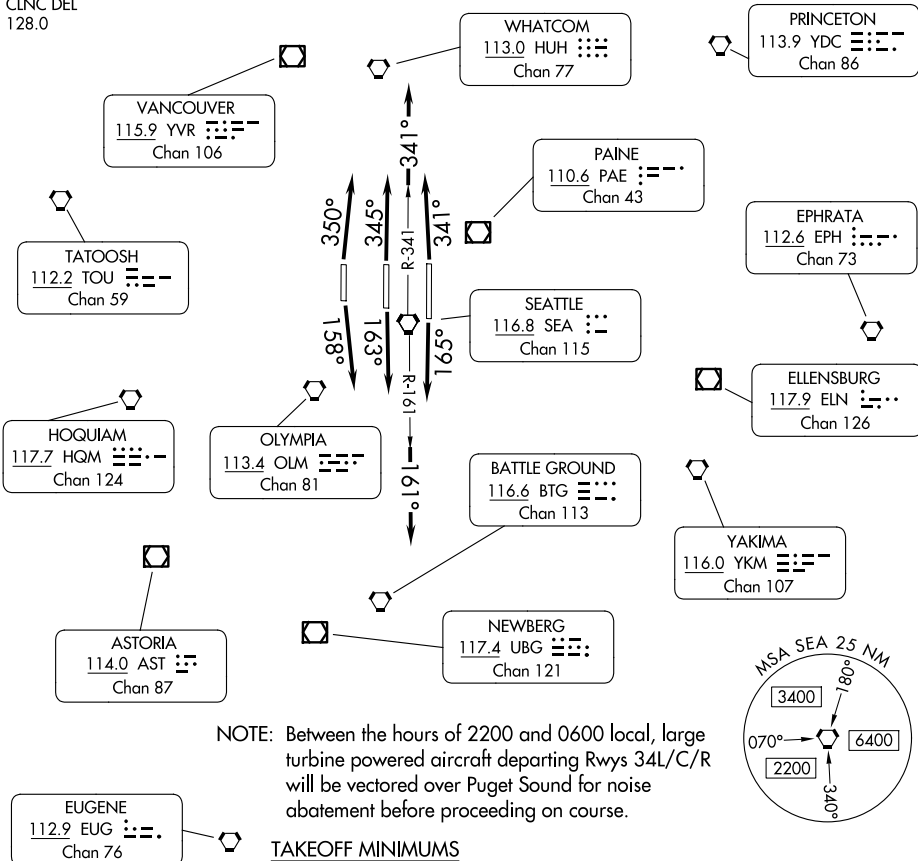
AL-582 (FAA)

SEATTLE-TACOMA INTL (SEA)
SEATTLE, WASHINGTON

SEATTLE DEP CON
119.2 284.7
D-ATIS
118.0
CLNC DEL
128.0

**TOP ALTITUDE:
ASSIGNED BY ATC**

RADAR required.



NOTE: Between the hours of 2200 and 0600 local, large turbine powered aircraft departing Rwy's 34L/C/R will be vectored over Puget Sound for noise abatement before proceeding on course.

TAKEOFF MINIMUMS

Rwys 16C, 34L, 34C, 34R: Standard.
Rwy 16L: 300-1 or standard with minimum climb of 425'/NM to 600.
Rwy 16R: 300-1¼ or standard with minimum climb of 215'/NM to 600.

NOTE: Chart not to scale.

DEPARTURE ROUTE DESCRIPTION

- TAKEOFF RUNWAY 16L: Climb on heading 165° and on SEA R-161, thence. . .
 - TAKEOFF RUNWAY 16C: Climb on heading 163° and on SEA R-161, thence. . .
 - TAKEOFF RUNWAY 16R: Climb on heading 158° and on SEA R-161, thence. . .
 - TAKEOFF RUNWAY 34L: Climb on heading 350° and on SEA R-341, thence. . .
 - TAKEOFF RUNWAY 34C: Climb on heading 345° and on SEA R-341, thence. . .
 - TAKEOFF RUNWAY 34R: Climb on heading 341° and on SEA R-341, thence. . .
- . . . expect RADAR vectors to assigned route. Maintain ATC assigned altitude, expect requested altitude 15 NM after SEA.

SEATTLE NINE DEPARTURE

(SEA 9 SEA) 26DEC24

SEATTLE, WASHINGTON
SEATTLE-TACOMA INTL (SEA)

NW-1, 30 OCT 2025 to 27 NOV 2025

NW-1, 30 OCT 2025 to 27 NOV 2025

(SEA1, SEA) 25331

SEATTLE ONE DEPARTURE

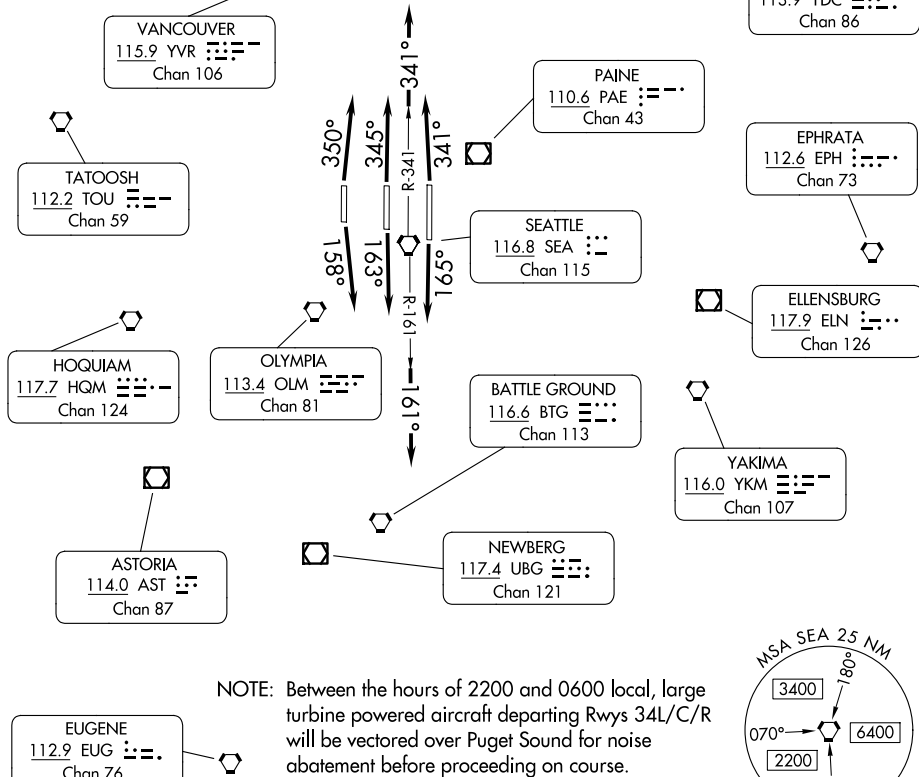
AL-582 (FAA)

SEATTLE-TACOMA INTL (SEA)
SEATTLE, WASHINGTON

SEATTLE DEP CON
119.2 284.7
D-ATIS
118.0
CLNC DEL
128.0

**TOP ALTITUDE:
ASSIGNED BY ATC**

RADAR required.



NW-1, 127 NOV 2025 to 25 DEC 2025

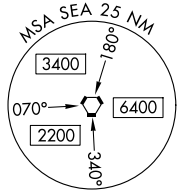
NW-1, 127 NOV 2025 to 25 DEC 2025

NOTE: Between the hours of 2200 and 0600 local, large turbine powered aircraft departing Rwy 34L/C/R will be vectored over Puget Sound for noise abatement before proceeding on course.

TAKEOFF MINIMUMS

Rwys 16C, 34L, 34C, 34R: Standard.
Rwy 16L: 300-1 or standard with minimum climb of 425'/NM to 600.
Rwy 16R: 300-1¼ or standard with minimum climb of 215'/NM to 600.

NOTE: Chart not to scale.



DEPARTURE ROUTE DESCRIPTION

TAKEOFF RUNWAY 16L: Climb on heading 165° and on SEA R-161, thence. . . .

TAKEOFF RUNWAY 16C: Climb on heading 163° and on SEA R-161, thence. . . .

TAKEOFF RUNWAY 16R: Climb on heading 158° and on SEA R-161, thence. . . .

TAKEOFF RUNWAY 34L: Climb on heading 350° and on SEA R-341, thence. . . .

TAKEOFF RUNWAY 34C: Climb on heading 345° and on SEA R-341, thence. . . .

TAKEOFF RUNWAY 34R: Climb on heading 341° and on SEA R-341, thence. . . .

. . . expect RADAR vectors to assigned route. Maintain ATC assigned altitude, expect requested altitude 15 NM after SEA.

SEATTLE ONE DEPARTURE

(SEA1, SEA) 27NOV25

SEATTLE, WASHINGTON
SEATTLE-TACOMA INTL (SEA)