

SANTA FE, NEW MEXICO

AL-548 (FAA)

25163

VORTAC SAF <b>110.6</b> Chan 43	APP CRS <b>332°</b>	Rwy Ldg 6316 TDZE 6305 Apt Elev 6349
---------------------------------------	------------------------	---

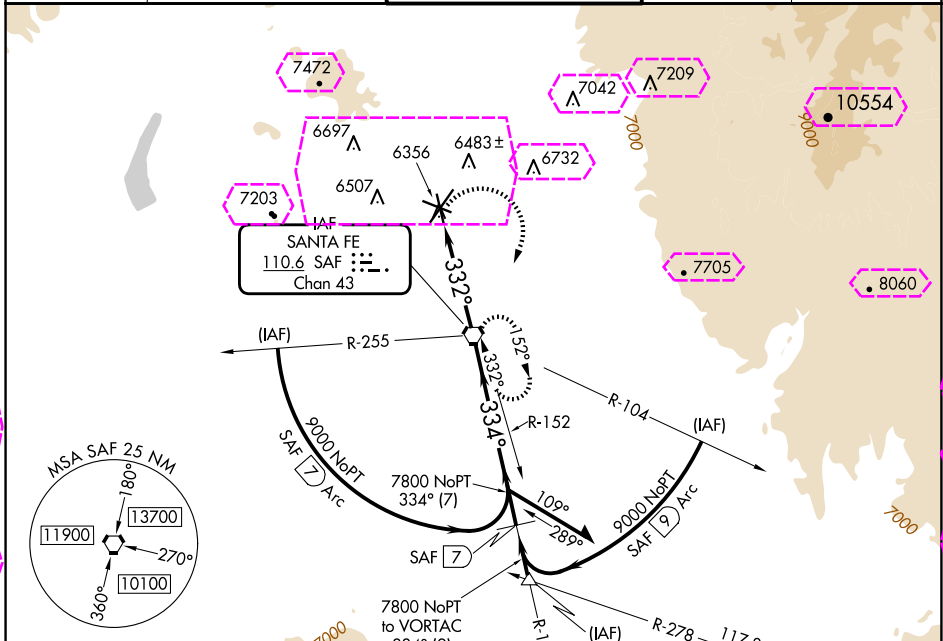
# VOR RWY 33

SANTA FE RGNL (SAF)

⚠ When Control Tower closed, obtain local altimeter setting on unicom; when not received, use Los Alamos altimeter setting: increase all MDAs 160 feet and S-33 visibility Cat C/D ½ SM.

MISSD APPROACH: Climbing right turn to 9000 direct SAF VORTAC and hold, continue climb-in-hold to 9000.

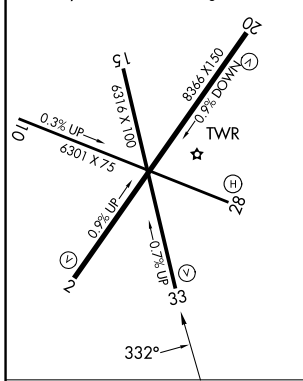
ATIS <b>128.55</b>	ALBUQUERQUE CENTER <b>132.8 346.35</b>	SANTA FE TOWER★ <b>119.5 (CTAF) 239.3</b>	GND CON <b>121.7</b>	UNICOM <b>122.95</b>
-----------------------	---	--	-------------------------	-------------------------



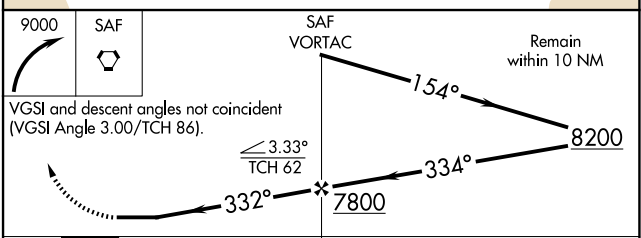
SW-1, 30 OCT 2025 to 27 NOV 2025

SW-1, 30 OCT 2025 to 27 NOV 2025

ELEV 6349	D	TDZE 6305
REIL Rwy 10, 15, 20 and 33		
MIRL Rwy 2-20 and 15-33		



FAF to MAP 4.2 NM					
Knots	60	90	120	150	180
Min:Sec	4:12	2:48	2:06	1:41	1:24



CATEGORY	A	B	C	D
S-33	6720-1	415 (400-1)	6720-1¼	415 (400-1¼)
CIRCLING	6840-1 491 (500-1)	6920-1 571 (600-1)	7340-3 991 (1000-3)	7660-3 1311 (1400-3)

SANTA FE, NEW MEXICO  
Amdt 9C 06OCT22

35°37'N-106°05'W

# SANTA FE RGNL (SAF) VOR RWY 33

SANTA FE, NEW MEXICO

AL-548 (FAA)

25331

VORTAC SAF <b>110.6</b> Chan 43	APP CRS <b>332°</b>	Rwy Ldg 6316 TDZE 6305 Apt Elev 6349
---------------------------------------	------------------------	---

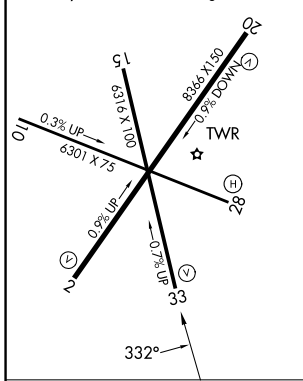
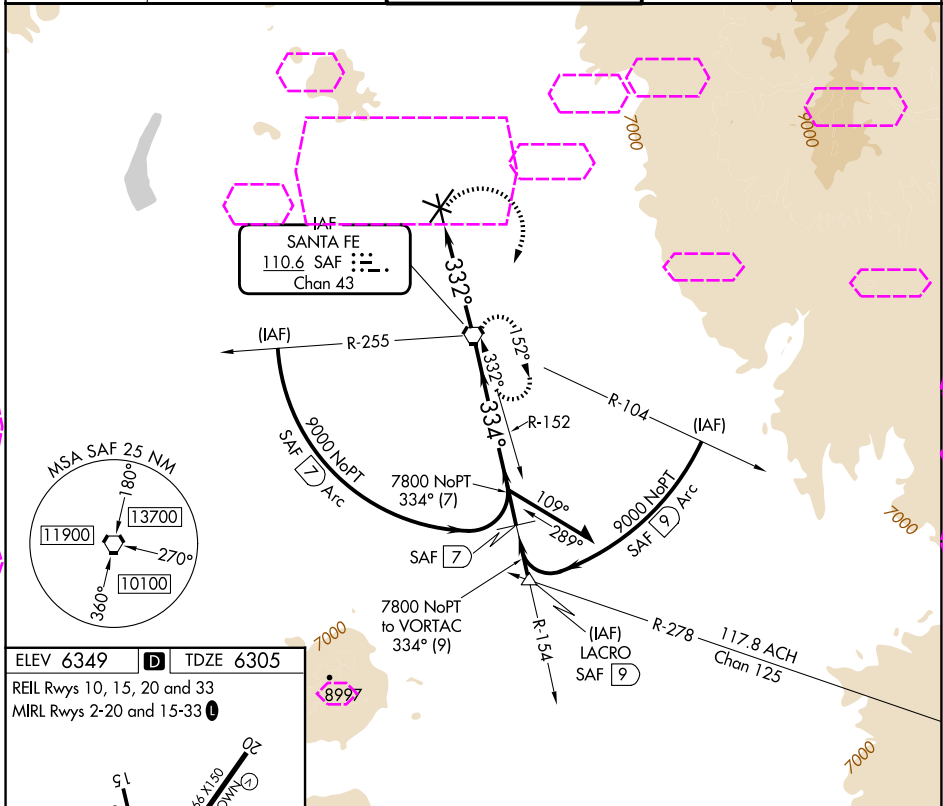
# VOR RWY 33

SANTA FE RGNL (SAF)

⚠ When Control Tower closed, obtain local altimeter setting on unicom; when not received, use Los Alamos altimeter setting: increase all MDAs 160 feet and S-33 visibility Cat C/D ½ SM.

MISSED APPROACH: Climbing right turn to 9000 direct SAF VORTAC and hold, continue climb-in-hold to 9000.

ATIS <b>128.55</b>	ALBUQUERQUE CENTER <b>132.8 346.35</b>	SANTA FE TOWER★ <b>119.5 (CTAF) 239.3</b>	GND CON <b>121.7</b>	UNICOM <b>122.95</b>
-----------------------	---	--	-------------------------	-------------------------



FAF to MAP 4.2 NM					
Knots	60	90	120	150	180
Min:Sec	4:12	2:48	2:06	1:41	1:24

CATEGORY	A	B	C	D
S-33	6720-1	415 (400-1)	6720-1¼	415 (400-1¼)
CIRCLING	6840-1 491 (500-1)	6920-1 571 (600-1)	7340-3 991 (1000-3)	7660-3 1311 (1400-3)

SANTA FE, NEW MEXICO  
Amdt 9C 06OCT22

35°37'N-106°05'W

# SANTA FE RGNL (SAF) VOR RWY 33

SW-1, 27 NOV 2025 to 25 DEC 2025

SW-1, 27 NOV 2025 to 25 DEC 2025