

WAAS CH 69539 W33A	APP CRS 339°	Rwy Ldg 6316 TDZE 6305 Apt Elev 6349
--	------------------------	---

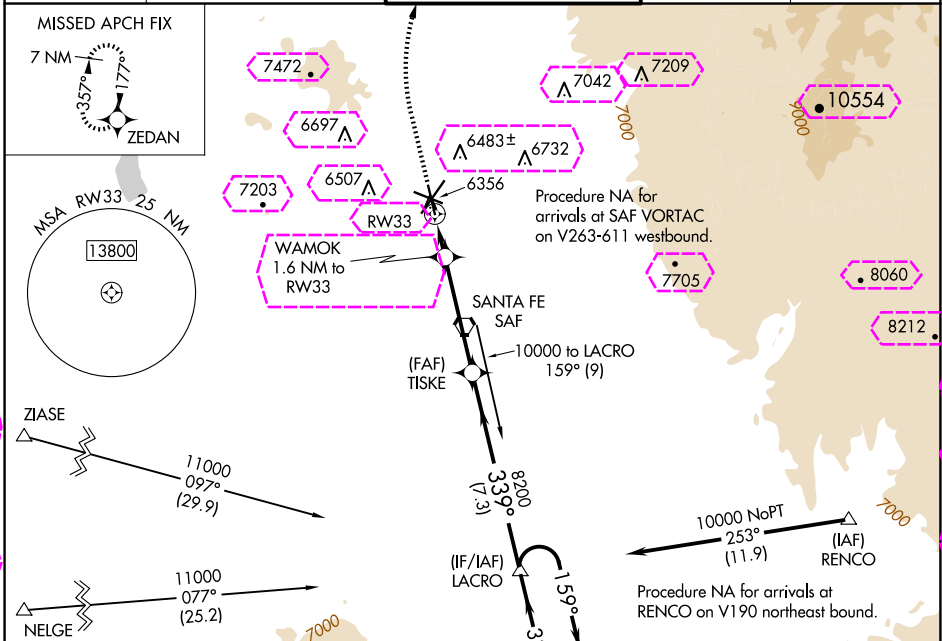
RNAV (GPS) RWY 33

SANTA FE RGNL (SAF)

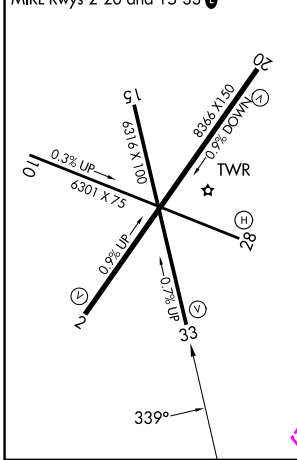
⚠ For uncompensated Baro-VNAV systems, LNAV/VNAV NA below -18°C (0°F) or above 43°C (110°F). DME/DME RNP-0.3 NA.

⚠ MISSED APPROACH: Climb to 6800 then climbing right turn to 11000 direct ZEDAN and hold.

ATIS 128.55	ALBUQUERQUE CENTER 132.8 346.35	SANTA FE TOWER * 119.5 (CTAF) 0 239.3	GND CON 121.7	UNICOM 122.95
-----------------------	---	---	-------------------------	-------------------------



ELEV 6349	D	TDZE 6305
REIL Rwy 10, 15, 20 and 33		
MIRL Rwy 2-20 and 15-33		



CATEGORY	A	B	C	D
LPV DA		6555-7/8	250 (300-7/8)	
LNAV/VNAV DA		6555-7/8	250 (300-7/8)	
LNAV MDA	6620-1	315 (300-1)	6620-7/8	315 (300-7/8)
CIRCLING	6800-1 451 (500-1)	6920-1 571 (600-1)	7340-3 991 (1000-3)	7660-3 1311 (1400-3)

SW-1, 30 OCT 2025 to 27 NOV 2025

SW-1, 30 OCT 2025 to 27 NOV 2025

SANTA FE, NEW MEXICO

AL-548 (FAA)

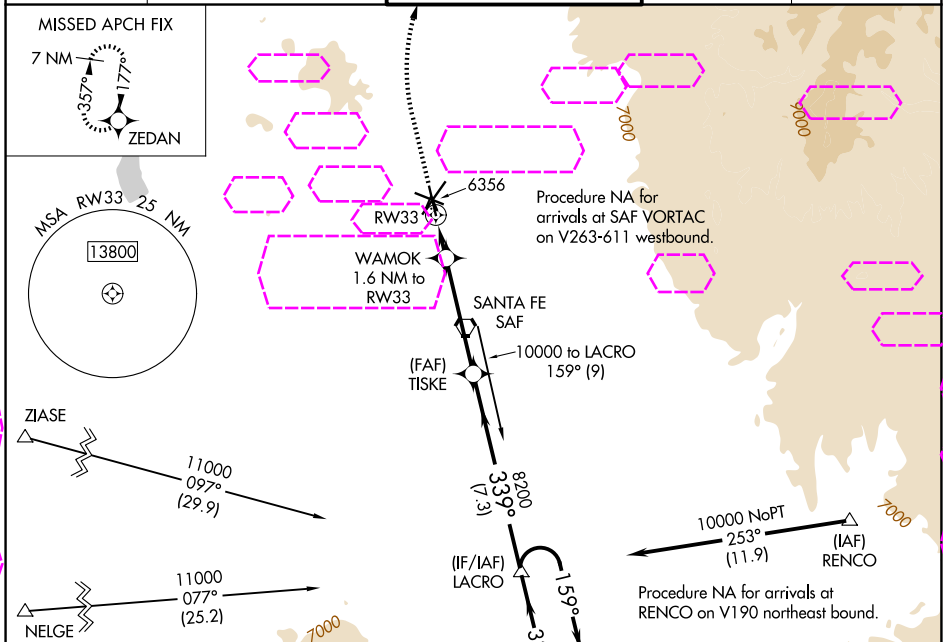
25331

WAAS CH 69539 W33A	APP CRS 339°	Rwy Ldg TDZE 6316 Apt Elev 6305 6349
--	------------------------	--

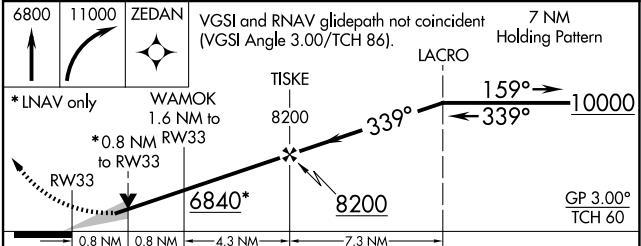
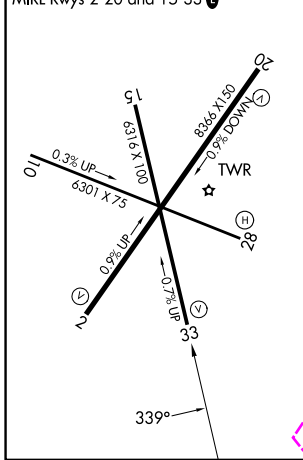
RNAV (GPS) RWY 33

SANTA FE RGNL (SAF)

<p>⚠ For uncompensated Baro-VNAV systems, LNAV/VNAV NA below -18°C (0°F) or above 43°C (110°F). DME/DME RNP-0.3 NA.</p>		<p>MISSED APPROACH: Climb to 6800 then climbing right turn to 11000 direct ZEDAN and hold.</p>	
ATIS 128.55	ALBUQUERQUE CENTER 132.8 346.35	SANTA FE TOWER * 119.5 (CTAF) 0 239.3	GND CON 121.7
		UNICOM 122.95	



ELEV 6349	D	TDZE 6305
REIL Rwy's 10, 15, 20 and 33		
MIRL Rwy's 2-20 and 15-33		



CATEGORY	A	B	C	D
LPV DA		6555-7/8	250 (300-7/8)	
LNAV/VNAV DA		6555-7/8	250 (300-7/8)	
LNAV MDA	6620-1	315 (300-1)	6620-7/8	315 (300-7/8)
CIRCLING	6800-1 451 (500-1)	6920-1 571 (600-1)	7340-3 991 (1000-3)	7660-3 1311 (1400-3)

SANTA FE, NEW MEXICO
Amdt 1 05JAN17

35°37'N-106°05'W

RNAV (GPS) RWY 33

SW-1, 127 NOV 2025 to 25 DEC 2025

SW-1, 127 NOV 2025 to 25 DEC 2025