

WAAS CH <b>63039</b> W02A	APP CRS <b>027°</b>	Rwy Ldg TDZE <b>6303</b> Apt Elev <b>6349</b>
---------------------------------	------------------------	---

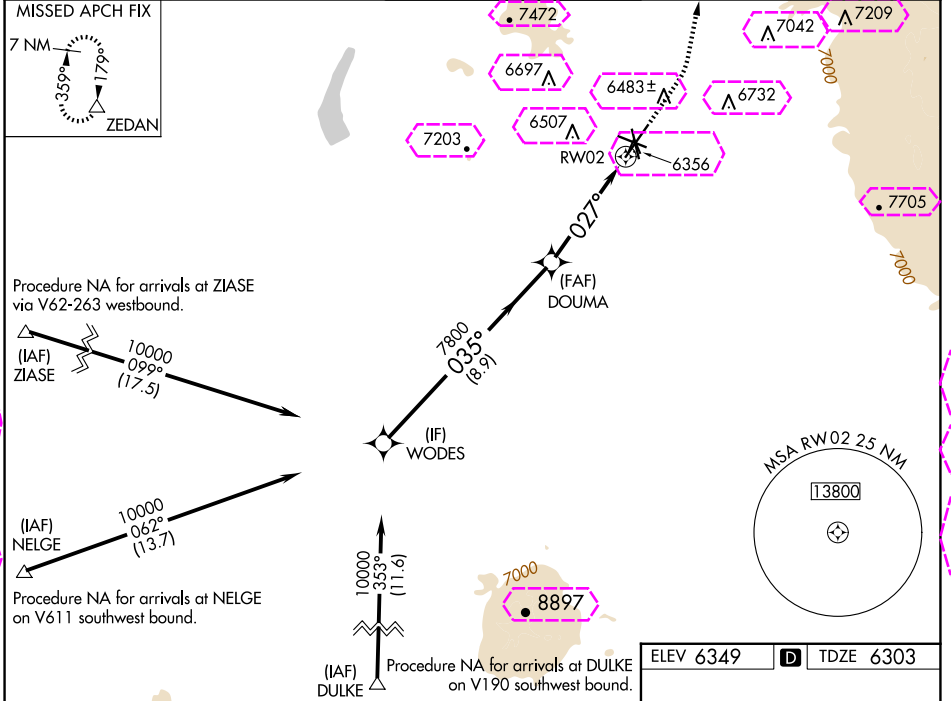
# RNAV (GPS) RWY 2

SANTA FE RGNL (SAF)

**▽** For uncompensated Baro-VNAV systems, LNAV/VNAV NA below -18°C (0°F) or above 45°C (113°F). DME/DME RNP-0.3 NA.

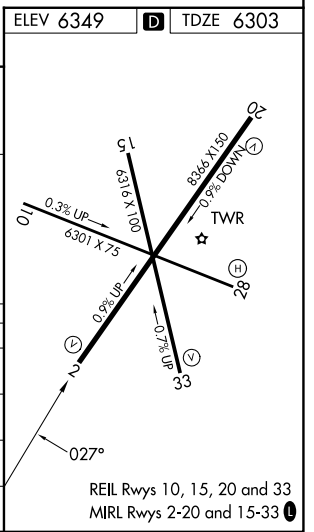
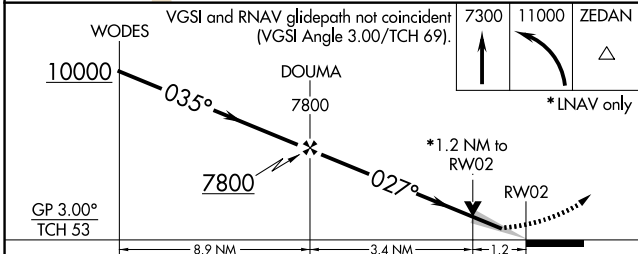
**▲** MISSED APPROACH: Climb to 7300 then climbing left turn to 11000 direct ZEDAN and hold.

ATIS <b>128.55</b>	ALBUQUERQUE CENTER <b>132.8 346.35</b>	SANTA FE TOWER ★ <b>119.5 (CTAF) 239.3</b>	GND CON <b>121.7</b>	UNICOM <b>122.95</b>
-----------------------	---	---	-------------------------	-------------------------



SW-1, 30 OCT 2025 to 27 NOV 2025

SW-1, 30 OCT 2025 to 27 NOV 2025



CATEGORY	A	B	C	D
LPV DA		6503-3/4	200 (200-3/4)	
LNAV/VNAV DA		6553-7/8	250 (300-7/8)	
LNAV MDA	6740-1	437 (400-1)	6740-1 1/4	437 (400-1 1/4)
<b>CIRCLING</b>	6800-1 451 (500-1)	6920-1 571 (600-1)	7340-3 991 (1000-3)	7660-3 1311 (1400-3)

REIL Rwy 10, 15, 20 and 33  
MIRL Rwy 2-20 and 15-33

SANTA FE, NEW MEXICO

AL-548 (FAA)

25331

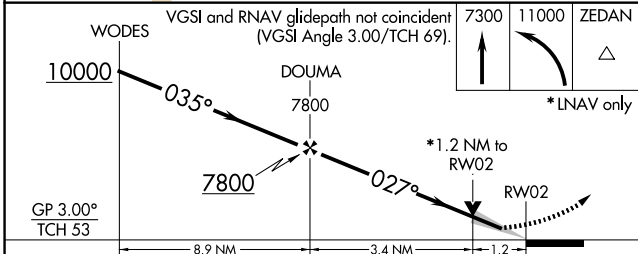
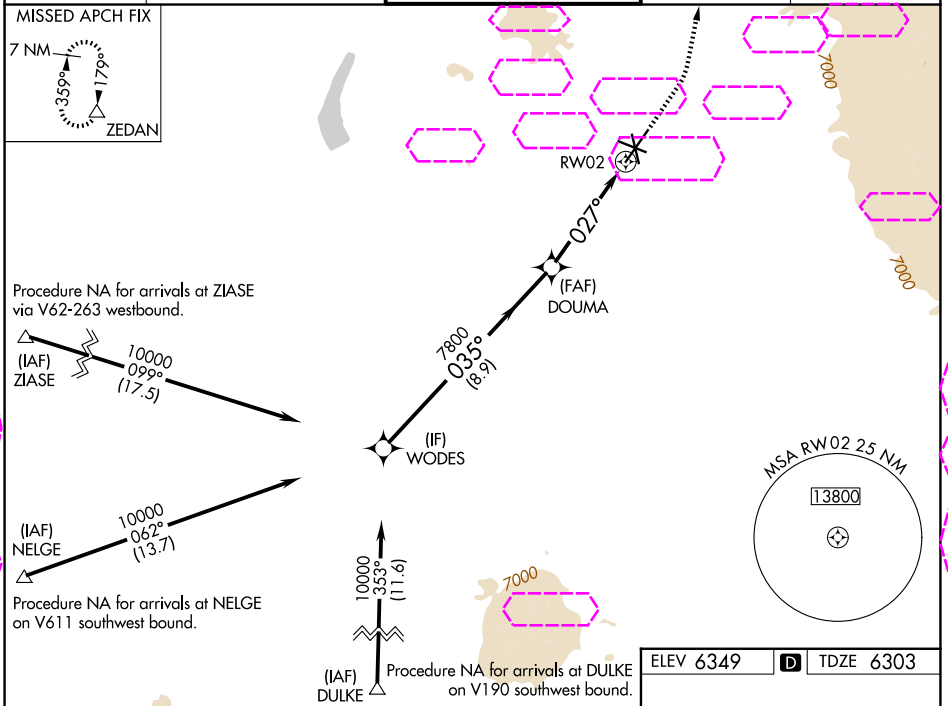
WAAS CH <b>63039</b> <b>W02A</b>	APP CRS <b>027°</b>	Rwy Ldg TDZE <b>6303</b> Apt Elev <b>6349</b>
--	------------------------	---

# RNAV (GPS) RWY 2

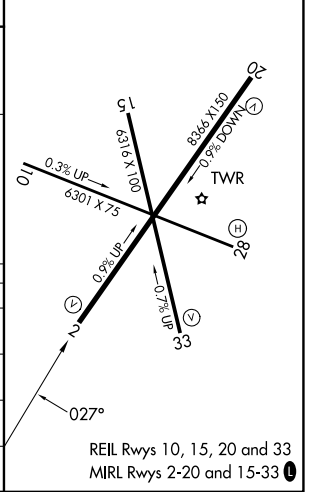
SANTA FE RGNL (SAF)

**▽** For uncompensated Baro-VNAV systems, LNAV/VNAV NA below -18°C (0°F) or above 45°C (113°F). DME/DME RNP-0.3 NA.  
**▲** MISSED APPROACH: Climb to 7300 then climbing left turn to 11000 direct ZEDAN and hold.

ATIS <b>128.55</b>	ALBUQUERQUE CENTER <b>132.8 346.35</b>	SANTA FE TOWER ★ <b>119.5 (CTAF) 239.3</b>	GND CON <b>121.7</b>	UNICOM <b>122.95</b>
-----------------------	---	---	-------------------------	-------------------------



ELEV 6349	<b>D</b> TDZE 6303
-----------	--------------------



CATEGORY	A	B	C	D
LPV DA		6503-¾	200 (200-¾)	
LNAV/VNAV DA		6553-7/8	250 (300-7/8)	
LNAV MDA	6740-1	437 (400-1)	6740-1¼	437 (400-1¼)
<b>CIRCLING</b>	6800-1 451 (500-1)	6920-1 571 (600-1)	7340-3 991 (1000-3)	7660-3 1311 (1400-3)

SANTA FE, NEW MEXICO  
 Amdt 1 05JAN17

35°37'N-106°05'W

## SANTA FE RGNL (SAF) RNAV (GPS) RWY 2

SW-1, 127 NOV 2025 to 25 DEC 2025

SW-1, 127 NOV 2025 to 25 DEC 2025