

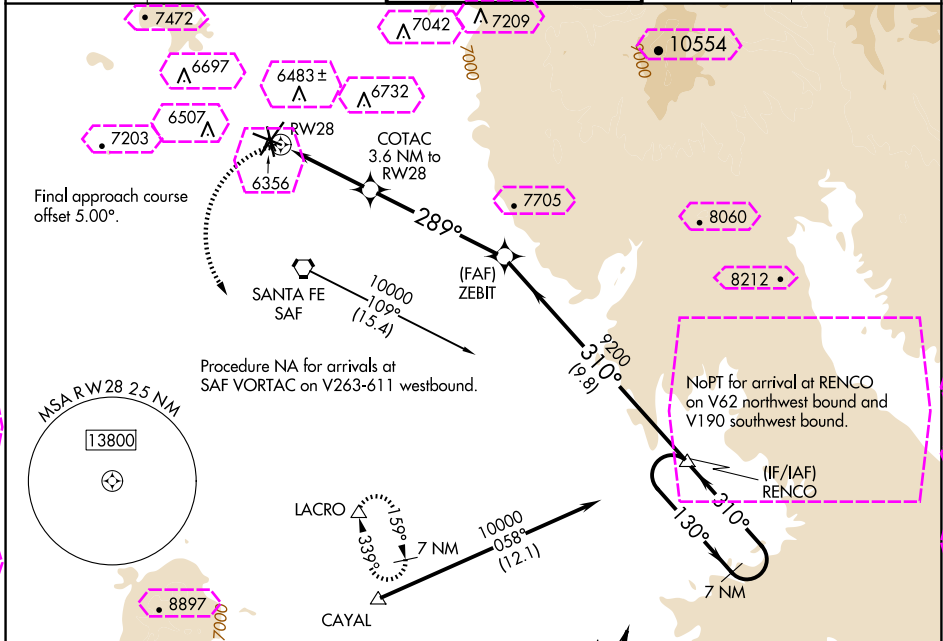
APP CRS	Rwy Ldg	6301
289°	TDZE	6307
	Apt Elev	6349

RNAV (GPS) RWY 28

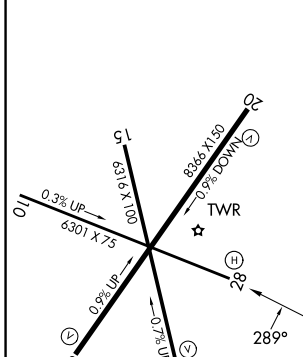
SANTA FE RGNL (SAF)

▽ ▲	DME/DME RNP-0.3 NA.	MISSED APPROACH: Climbing left turn to 9200 direct LACRO and hold.
----------------------	---------------------	--

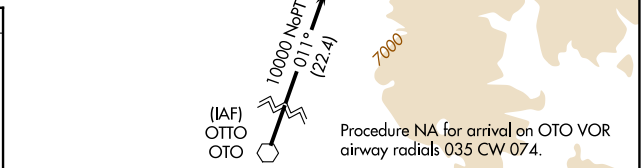
ATIS 128.55	ALBUQUERQUE CENTER 132.8 346.35	SANTA FE TOWER ★ 119.5 (CTAF) 239.3	GND CON 121.7	UNICOM 122.95
-----------------------	---	---	-------------------------	-------------------------



ELEV 6349	D	TDZE 6307
-----------	----------	-----------



REIL Rws 10, 15, 20 and 33	MIRL Rws 2-20 and 15-33
----------------------------	-------------------------



CATEGORY	A	B	C	D
LNAV MDA	6960-1	653 (700-1)	6960-1 $\frac{1}{8}$	653 (700-1 $\frac{1}{8}$)
CIRCLING	6960-1	611 (700-1)	7340-3 991 (1000-3)	7660-3 1311 (1400-3)

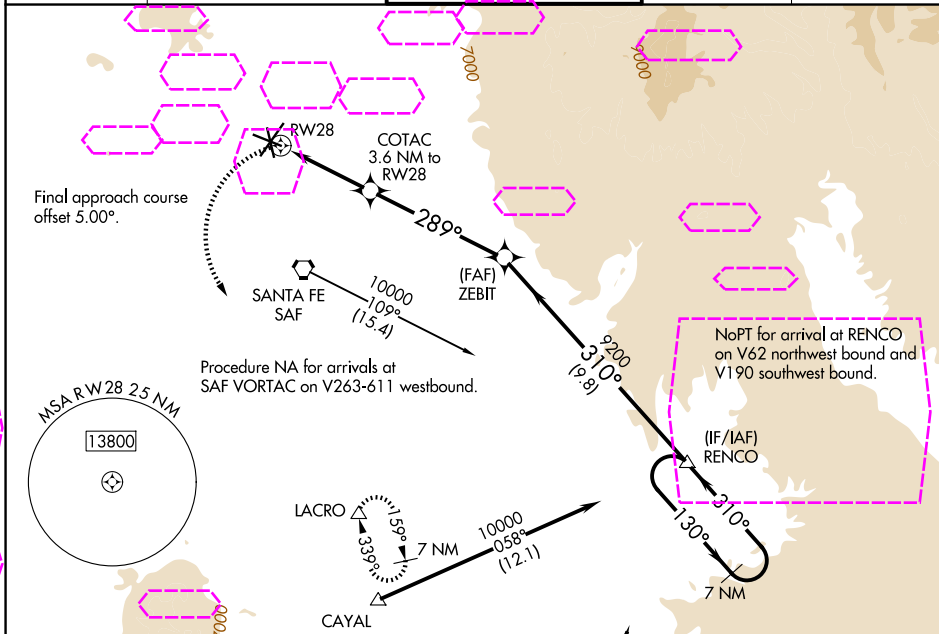
APP CRS	Rwy Ldg	6301
289°	TDZE	6307
	Apt Elev	6349

RNAV (GPS) RWY 28

SANTA FE RGNL (SAF)

▽ ▲	DME/DME RNP-0.3 NA.	MISSED APPROACH: Climbing left turn to 9200 direct LACRO and hold.
----------------------	---------------------	--

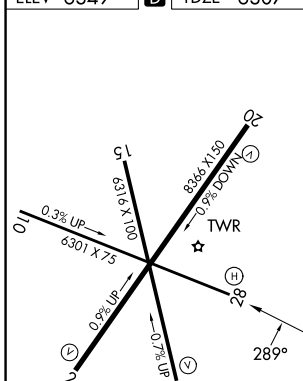
ATIS 128.55	ALBUQUERQUE CENTER 132.8 346.35	SANTA FE TOWER ★ 119.5 (CTAF) 239.3	GND CON 121.7	UNICOM 122.95
-----------------------	---	---	-------------------------	-------------------------



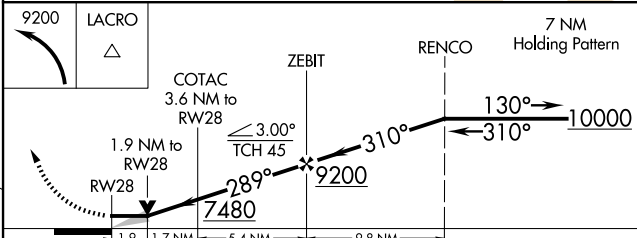
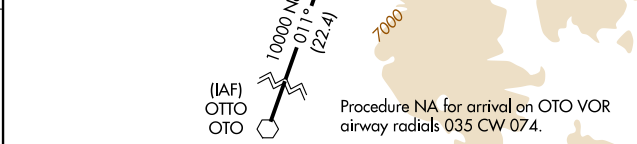
SW-1, 127 NOV 2025 to 25 DEC 2025

SW-1, 127 NOV 2025 to 25 DEC 2025

ELEV 6349	D	TDZE 6307
-----------	----------	-----------



REIL Rws 10, 15, 20 and 33	MIRL Rws 2-20 and 15-33
----------------------------	-------------------------



CATEGORY	A	B	C	D
LNAV MDA	6960-1	653 (700-1)	6960-1½	653 (700-1½)
CIRCLING	6960-1	611 (700-1)	7340-3 991 (1000-3)	7660-3 1311 (1400-3)