

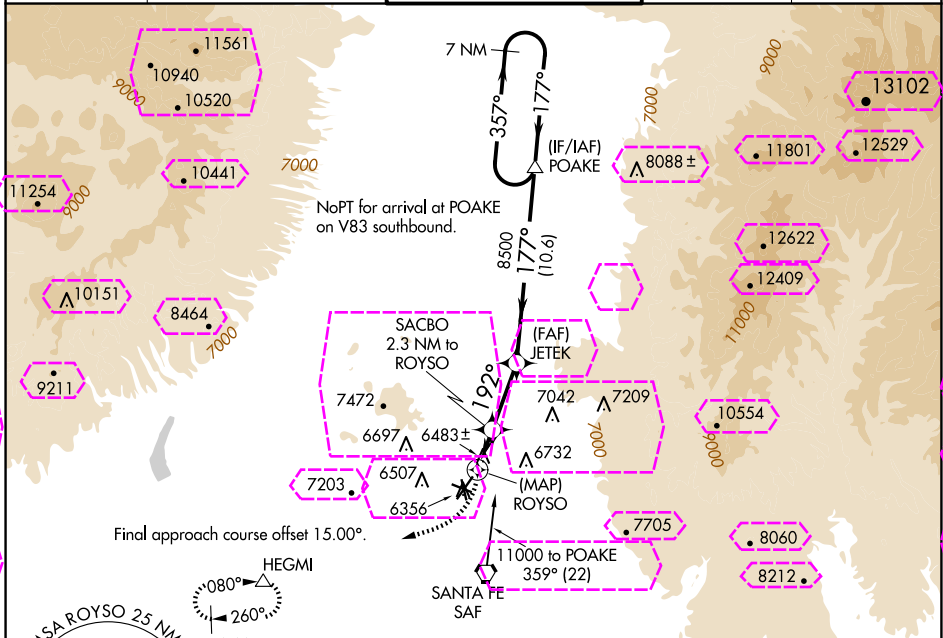
APP CRS	Rwy Ldg	8366
192°	TDZE	6349
	Apt Elev	6349

RNAV (GPS) RWY 20

SANTA FE RGNL (SAF)

	DME/DME RNP-0.3 NA.	MISSED APPROACH: Climbing right turn to 9000 direct HEGMI and hold.		
--	---------------------	---	--	--

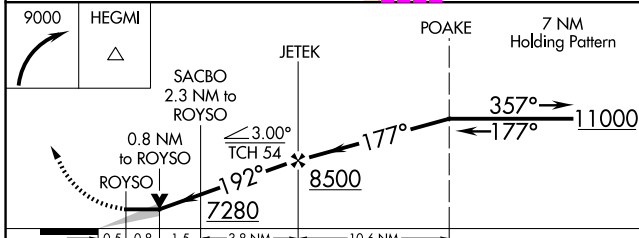
ATIS 128.55	ALBUQUERQUE CENTER 132.8 346.35	SANTA FE TOWER ★ 119.5 (CTAF) 239.3	GND CON 121.7	UNICOM 122.95
-----------------------	---	---	-------------------------	-------------------------



SW-1, 30 OCT 2025 to 27 NOV 2025

SW-1, 30 OCT 2025 to 27 NOV 2025

ELEV 6349	D	TDZE 6349
-----------	----------	-----------



9000	HEGMI	POAKE 7 NM Holding Pattern	
------	-------	----------------------------	--

REIL Rwy 10, 15, 20 and 33
MIRL Rwy 2-20 and 15-33

CATEGORY	A	B	C	D
LNVA MDA	6800-1	451 (500-1)	6800-1 $\frac{3}{8}$	451 (500-1 $\frac{3}{8}$)
CIRCLING	6800-1 451 (500-1)	6920-1 571 (600-1)	7340-3 991 (1000-3)	7660-3 1311 (1400-3)

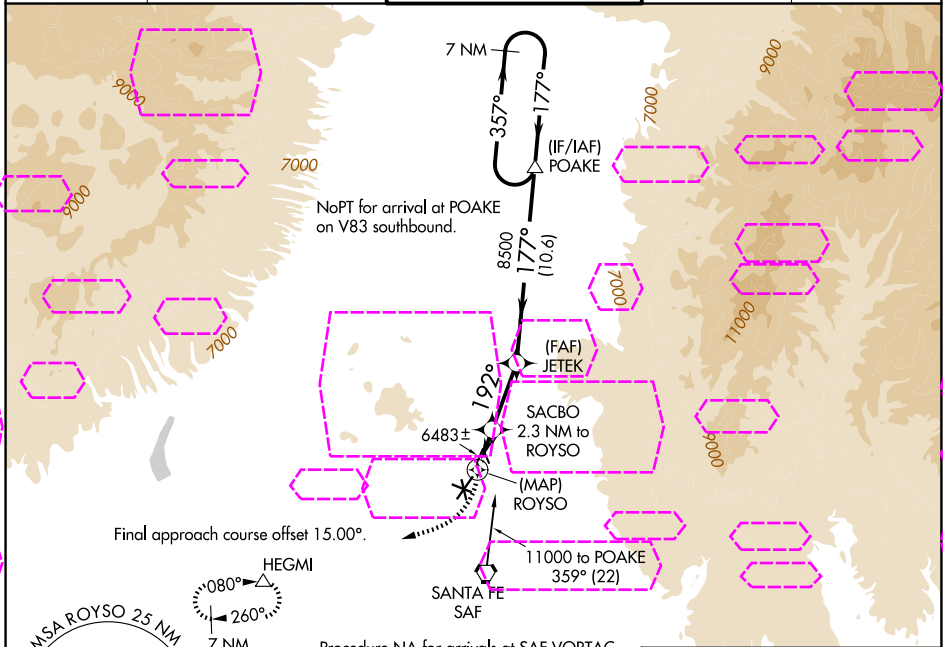
APP CRS	Rwy Ldg	8366
192°	TDZE	6349
	Apt Elev	6349

RNAV (GPS) RWY 20

SANTA FE RGNL (SAF)

		DME/DME RNP-0.3 NA.	MISSED APPROACH: Climbing right turn to 9000 direct HEGMI and hold.		
--	--	---------------------	---	--	--

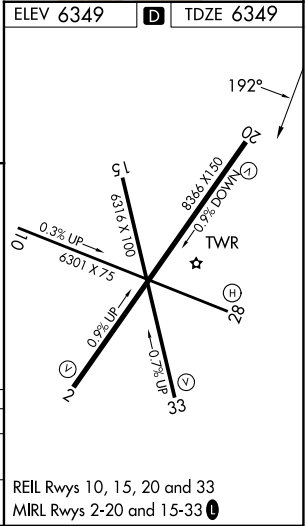
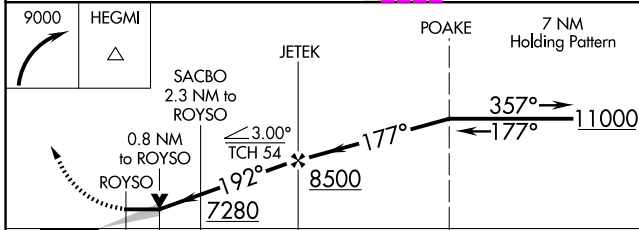
ATIS 128.55	ALBUQUERQUE CENTER 132.8 346.35	SANTA FE TOWER ★ 119.5 (CTAF) 239.3	GND CON 121.7	UNICOM 122.95
-----------------------	---	---	-------------------------	-------------------------



SW-1, 127 NOV 2025 to 25 DEC 2025

SW-1, 127 NOV 2025 to 25 DEC 2025

ELEV 6349	D TDZE 6349
-----------	--------------------



CATEGORY	A	B	C	D
LNVA MDA	6800-1	451 (500-1)	6800-1 $\frac{3}{8}$	451 (500-1 $\frac{3}{8}$)
CIRCLING	6800-1 451 (500-1)	6920-1 571 (600-1)	7340-3 991 (1000-3)	7660-3 1311 (1400-3)