

SANTA FE, NEW MEXICO

AL-548 (FAA)

25163

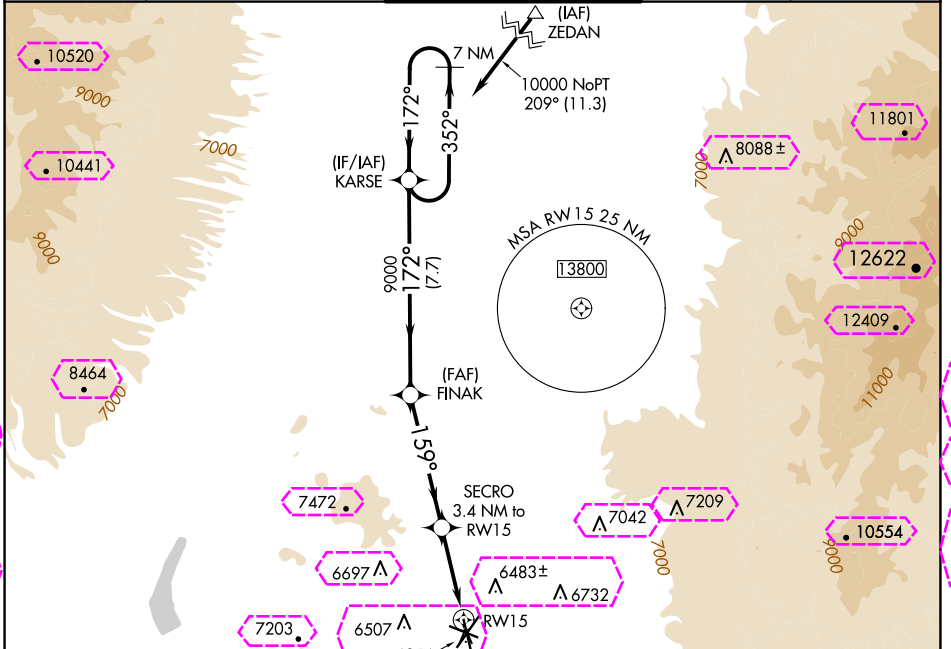
WAAS CH 87039 W15A	APP CRS 159°	Rwy Ldg TDZE Apt Elev	5221 6319 6349
---------------------------------	------------------------	-----------------------------	---

RNAV (GPS) RWY 15

SANTA FE RGNL (SAF)

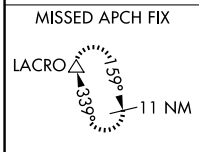
⚠ For uncompensated Baro-VNAV systems, LNAV/VNAV NA below -18°C (0°F) or above 47°C (117°F). DME/DME RNP-0.3 NA. MISSED APPROACH: Climb to 10300 direct LACRO and hold, continue climb-in-hold to 10300.

ATIS 128.55	ALBUQUERQUE CENTER 132.8 346.35	SANTA FE TOWER ★ 119.5 (CTAF) 239.3	GND CON 121.7	UNICOM 122.95
-----------------------	---	--	-------------------------	-------------------------



SW-1, 30 OCT 2025 to 27 NOV 2025

SW-1, 30 OCT 2025 to 27 NOV 2025

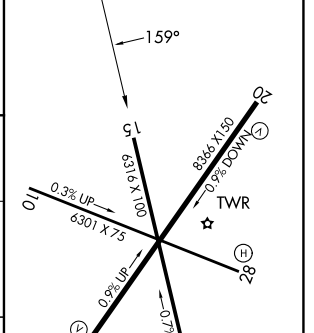
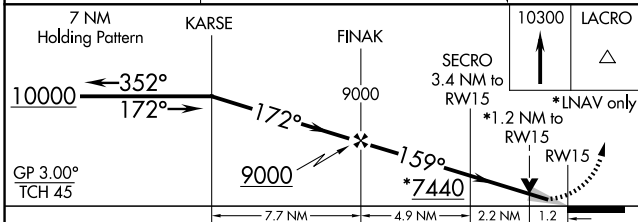


Procedure NA for arrivals at SAF VORTAC on V62-263 eastbound.

10000 to KARSE 343° (21.1)

SANTA FE SAF

ELEV 6349	D	TDZE 6319
-----------	---	-----------



CATEGORY	A	B	C	D
LPV DA		6569-3/4	250 (300-3/4)	
LNAV/VNAV DA		6569-3/4	250 (300-3/4)	
LNAV MDA	6740-1	421 (400-1)	6740-1 1/4	421 (400-1 1/4)
CIRCLING	6800-1 451 (500-1)	6920-1 571 (600-1)	7340-3 991 (1000-3)	7660-3 1311 (1400-3)

REIL Rwy's 10, 15, 20 and 33
MIRL Rwy's 2-20 and 15-33

SANTA FE, NEW MEXICO
Amdt 1 05JAN17

35°37'N-106°05'W

SANTA FE RGNL (SAF) RNAV (GPS) RWY 15

SANTA FE, NEW MEXICO

AL-548 (FAA)

25331

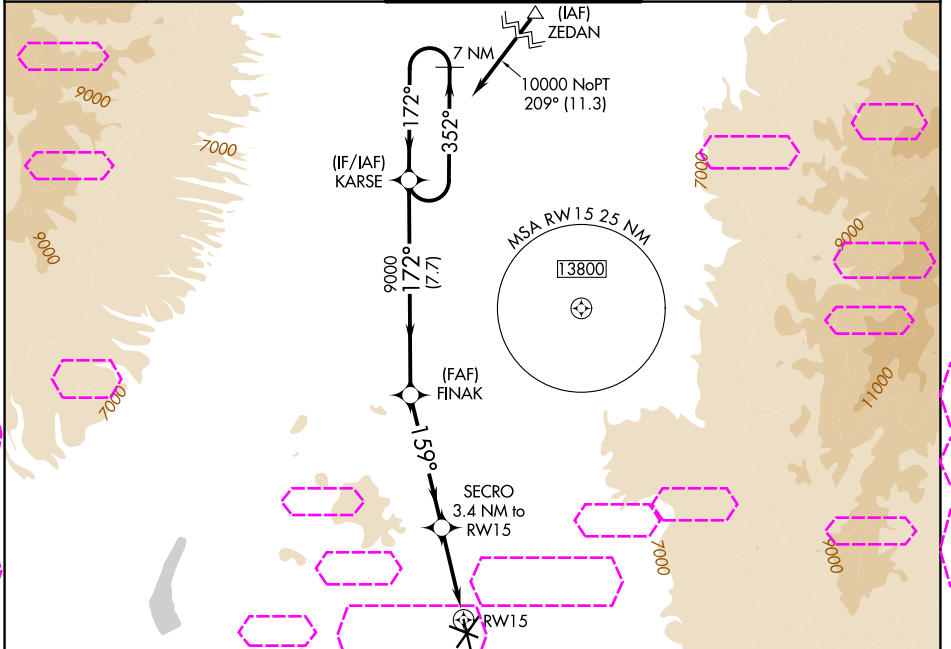
WAAS CH 87039 W15A	APP CRS 159°	Rwy Ldg TDZE Apt Elev	5221 6319 6349
---------------------------------	------------------------	-----------------------------	---

RNAV (GPS) RWY 15

SANTA FE RGNL (SAF)

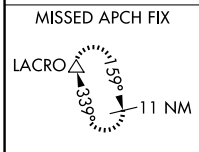
⚠ For uncompensated Baro-VNAV systems, LNAV/VNAV NA below -18°C (0°F) or above 47°C (117°F). DME/DME RNP-0.3 NA. MISSED APPROACH: Climb to 10300 direct LACRO and hold, continue climb-in-hold to 10300.

ATIS 128.55	ALBUQUERQUE CENTER 132.8 346.35	SANTA FE TOWER ★ 119.5 (CTAF) 239.3	GND CON 121.7	UNICOM 122.95
-----------------------	---	---	-------------------------	-------------------------



SW-1, 127 NOV 2025 to 25 DEC 2025

SW-1, 127 NOV 2025 to 25 DEC 2025

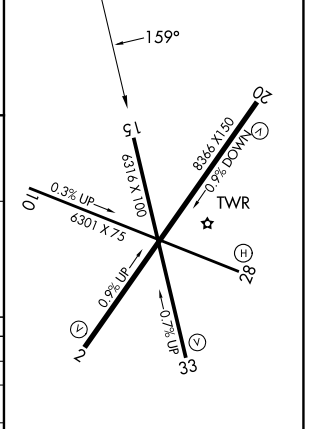
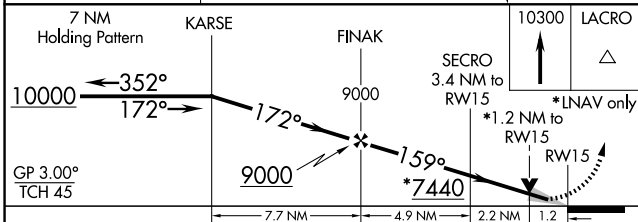


Procedure NA for arrivals at SAF VORTAC on V62-263 eastbound.

10000 to KARSE 343° (21.1)

SANTA FE SAF

ELEV 6349	D	TDZE 6319
-----------	----------	-----------



CATEGORY	A	B	C	D
LPV DA		6569-3/4	250 (300-3/4)	
LNAV/VNAV DA		6569-3/4	250 (300-3/4)	
LNAV MDA	6740-1	421 (400-1)	6740-1 1/4	421 (400-1 1/4)
CIRCLING	6800-1	6920-1	7340-3	7660-3
	451 (500-1)	571 (600-1)	991 (1000-3)	1311 (1400-3)

REIL Rwy's 10, 15, 20 and 33
MIRL Rwy's 2-20 and 15-33

SANTA FE, NEW MEXICO
Amdt 1 05JAN17

35°37'N-106°05'W

SANTA FE RGNL (SAF) RNAV (GPS) RWY 15