

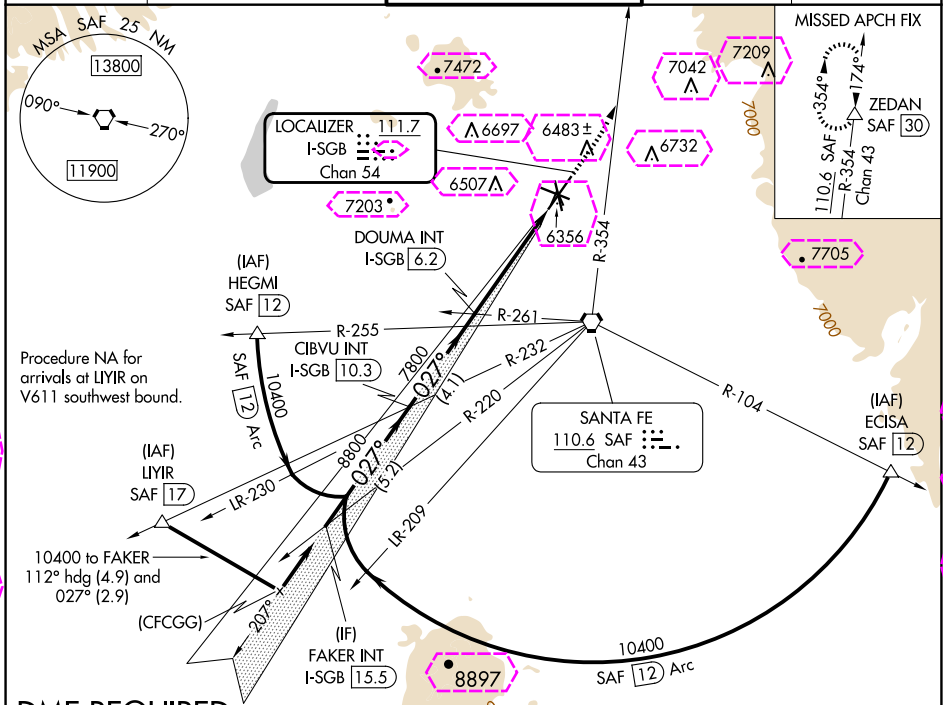
LOC/DME I-SGB <b>111.7</b> Chan <b>54</b>	APP CRS <b>027°</b>	Rwy Ldg TDZE Apt Elev <b>8366</b> <b>6303</b> <b>6349</b>
---	------------------------	--

# ILS or LOC RWY 2

SANTA FE RGNL (SAF)

**DME required.** MISSED APPROACH: Climb to 7300 then climbing left turn to 11000 on SAF VORTAC R-354 to ZEDAN/SAF 30 DME and hold.

ATIS <b>128.55</b>	ALBUQUERQUE CENTER <b>132.8 346.35</b>	SANTA FE TOWER ★ <b>119.5 (CTAF) 239.3</b>	GND CON <b>121.7</b>	UNICOM <b>122.95</b>
-----------------------	---	---	-------------------------	-------------------------



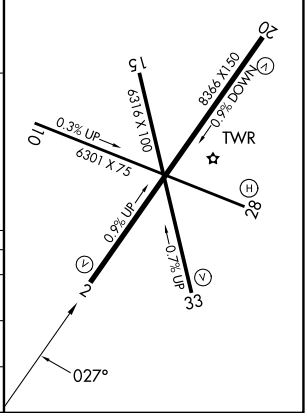
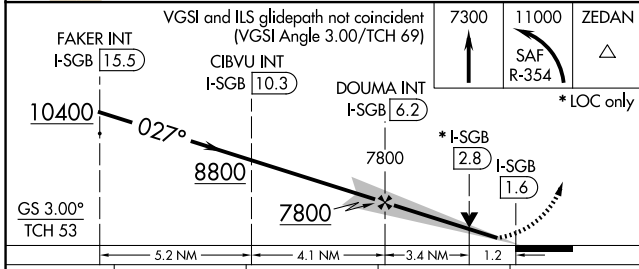
SW-1, 30 OCT 2025 to 27 NOV 2025

SW-1, 30 OCT 2025 to 27 NOV 2025

## DME REQUIRED

ELEV 6349	TDZE 6303
-----------	-----------

REIL Rws 10, 15, 20 and 33  
MIRL Rws 2-20 and 15-33



CATEGORY	A	B	C	D
S-ILS 2	6503-¾ 200 (200-¾)			
S-LOC 2	6740-1	437 (400-1)	6740-1¼	437 (400-1¼)
CIRCLING	6800-1 451 (500-1)	6920-1 571 (600-1)	7340-3 991 (1000-3)	7660-3 1311 (1400-3)

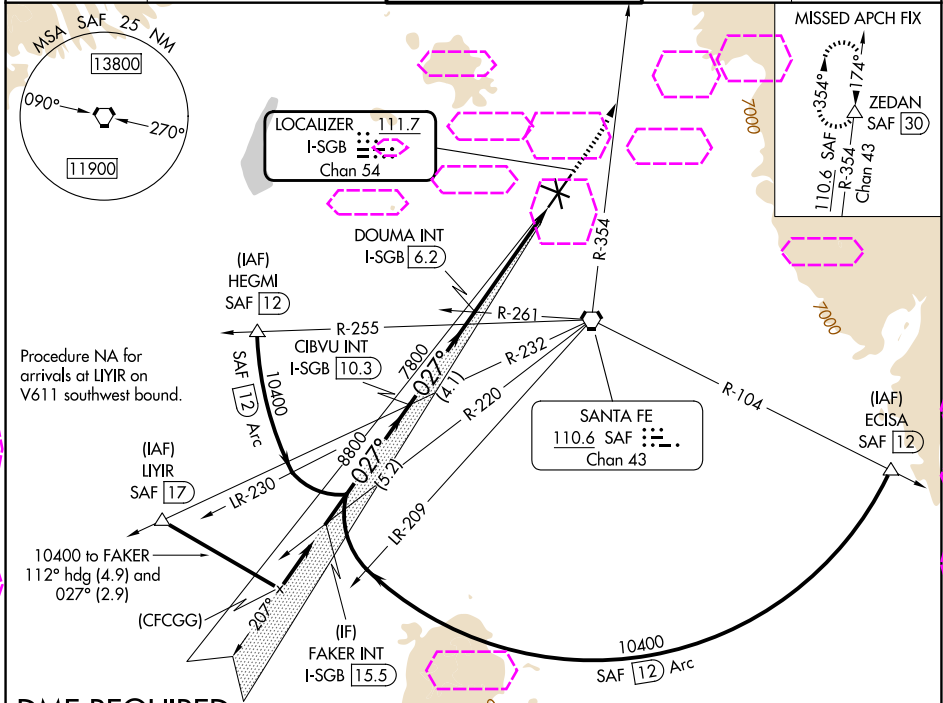
LOC/DME I-SGB <b>111.7</b> Chan <b>54</b>	APP CRS <b>027°</b>	Rwy Ldg TDZE Apt Elev	<b>8366</b> <b>6303</b> <b>6349</b>
---	------------------------	-----------------------------	---

# ILS or LOC RWY 2

SANTA FE RGNL (SAF)

**DME required.** MISSED APPROACH: Climb to 7300 then climbing left turn to 11000 on SAF VORTAC R-354 to ZEDAN/SAF 30 DME and hold.

ATIS <b>128.55</b>	ALBUQUERQUE CENTER <b>132.8 346.35</b>	SANTA FE TOWER ★ <b>119.5 (CTAF) 239.3</b>	GND CON <b>121.7</b>	UNICOM <b>122.95</b>
-----------------------	---	---	-------------------------	-------------------------



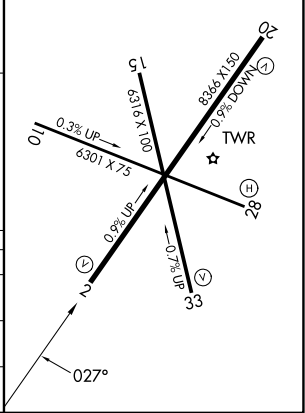
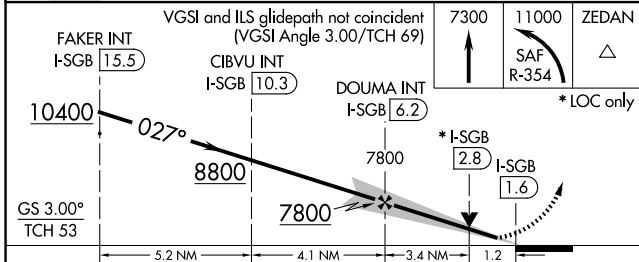
SW-1, 127 NOV 2025 to 25 DEC 2025

SW-1, 127 NOV 2025 to 25 DEC 2025

## DME REQUIRED

ELEV 6349 **D** TDZE 6303

REIL Rwy 10, 15, 20 and 33  
MIRL Rwy 2-20 and 15-33



CATEGORY	A	B	C	D
<b>S-LS 2</b>	6503-¾ 200 (200-¾)			
<b>S-LOC 2</b>	6740-1	437 (400-1)	6740-1¼	437 (400-1¼)
<b>CIRCLING</b>	6800-1 451 (500-1)	6920-1 571 (600-1)	7340-3 991 (1000-3)	7660-3 1311 (1400-3)