



COFFEYVILLE, KANSAS

AL-536 (FAA)

25331

WAAS CH <b>77544</b> <b>W17A</b>	APP CRS <b>175°</b>	Rwy Ldg TDZE Apt Elev	<b>5868</b> <b>753</b> <b>754</b>
--	------------------------	-----------------------------	---

# RNAV (GPS) RWY 17

COFFEYVILLE MUNI (CFV)

RNP APCH.

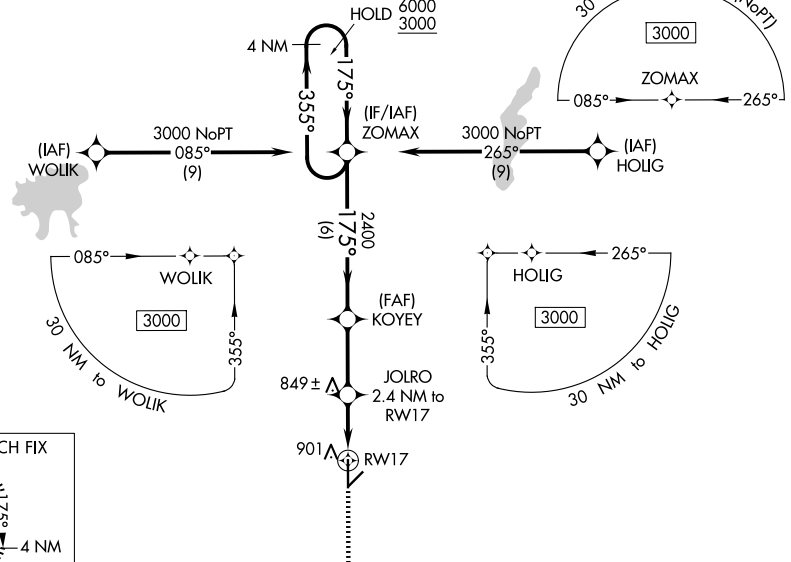
**⚠** Circling Rwy 4, 22 NA at night. Rwy 17 helicopter visibility reduction below 3/4 SM NA. For uncompensated Baro-VNAV systems, LNAV/VNAV NA below -16°C or above 54°C.

**⚠** MISSED APPROACH: Climb to 2500 direct NEIGH and hold.

ASOS  
**121.275**

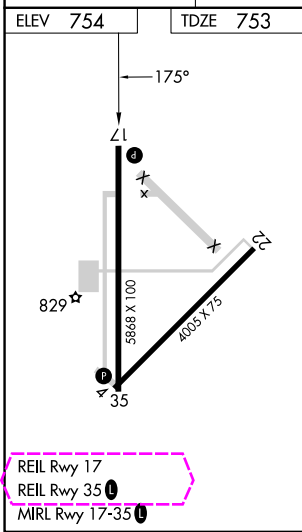
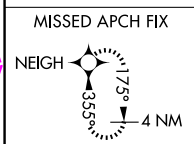
KANSAS CITY CENTER  
**128.6 282.325**

UNICOM  
**123.0 (CTAF) 0**

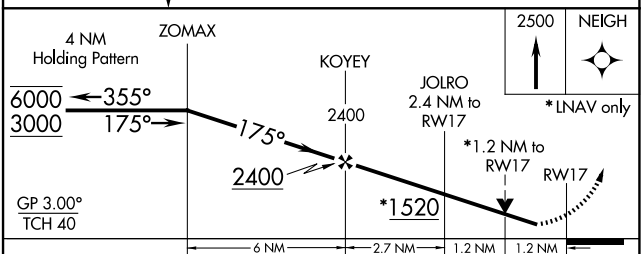


NC-2, 27 NOV 2025 to 25 DEC 2025

NC-2, 27 NOV 2025 to 25 DEC 2025



REIL Rwy 17  
REIL Rwy 35  
MIRL Rwy 17-35



CATEGORY	A	B	C	D
LPV DA		1003-1	250 (300-1)	
LNAV/VNAV DA		1062-1	309 (400-1)	
LNAV MDA	1160-1	407 (500-1)	1160-1 1/8	407 (500-1 1/8)
CIRCLING	1220-1	466 (500-1)	1300-1 1/2 546 (600-1 1/2)	1500-2 1/2 746 (800-2 1/2)

COFFEYVILLE, KANSAS  
Orig 15AUG19

37°06'N-95°34'W

# RNAV (GPS) RWY 17