

GARDEN CITY, KANSAS

AL-491 (FAA)

23110

VORTAC GCK 113.3 Chan 80	APP CRS 286°	Rwy Idg TDZE 2885 Apt Elev 2891
--	------------------------	---

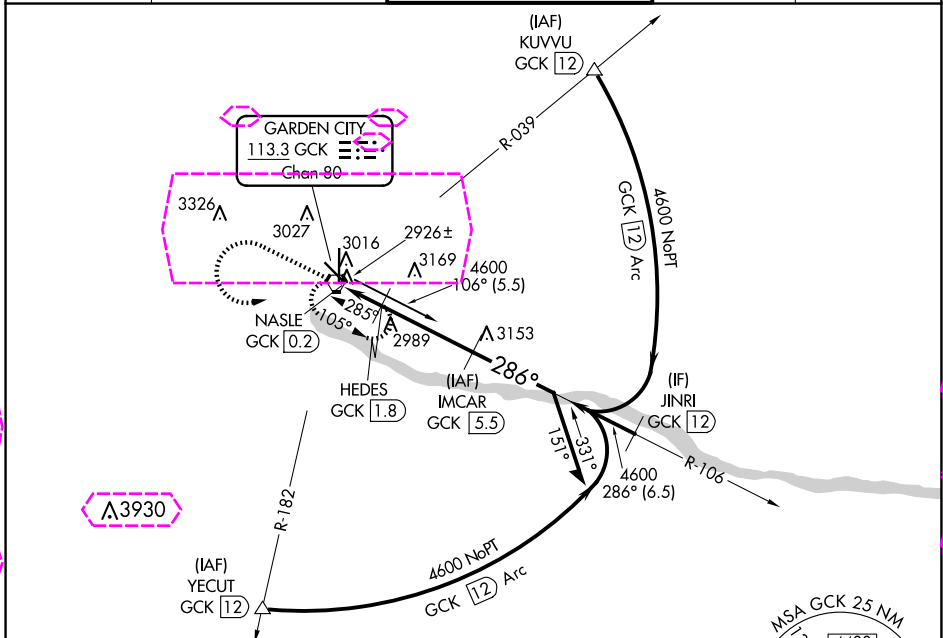
VOR/DME RWY 30

GARDEN CITY RGNL (GCK)

⚠ When local altimeter setting not received, use Dodge City Rgnl altimeter setting and increase all MDA 140 feet and Circling Cat C visibility ½ SM and Circling Cat D visibility ¼ SM.

MISSED APPROACH:
Climb to 4000 then climbing left turn to 4600 direct GCK VORTAC and hold.

ASOS 121.325	KANSAS CITY CENTER 125.2 285.425	GARDEN CITY TOWER ★ 118.15 (CTAF) 0 254.4	GND CON 119.0 254.4	UNICOM 122.95
------------------------	--	---	-------------------------------	-------------------------

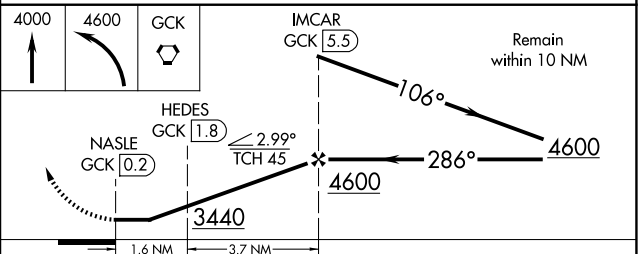
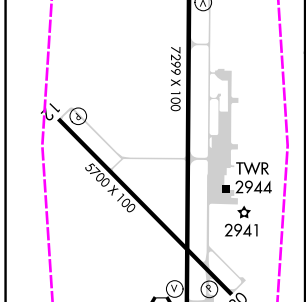


NC-2 30 OCT 2025 to 27 NOV 2025

NC-2 30 OCT 2025 to 27 NOV 2025

ELEV 2891	D	TDZE 2885
-----------	----------	-----------

REIL Rws 12, 17, and 30
MIRL Rwy 12-30
HIRL Rwy 17-35



CATEGORY	A	B	C	D
S-30	3240-1 355 (400-1)			3240-1¼ 355 (400-1¼)
CIRCLING	3320-1 429 (500-1)	3360-1 469 (500-1)	3480-1½ 589 (600-1½)	3480-2 589 (600-2)

GARDEN CITY, KANSAS
Amdt 1B 08OCT20

37°56'N-100°43'W

GARDEN CITY RGNL (GCK) VOR/DME RWY 30

