

GARDEN CITY, KANSAS

AL-491 (FAA)

23110

VORTAC GCK <b>113.3</b> Chan <b>80</b>	APP CRS <b>173°</b>	Rwy Idg <b>7299</b> TDZE <b>2889</b> Apt Elev <b>2891</b>
--	------------------------	---

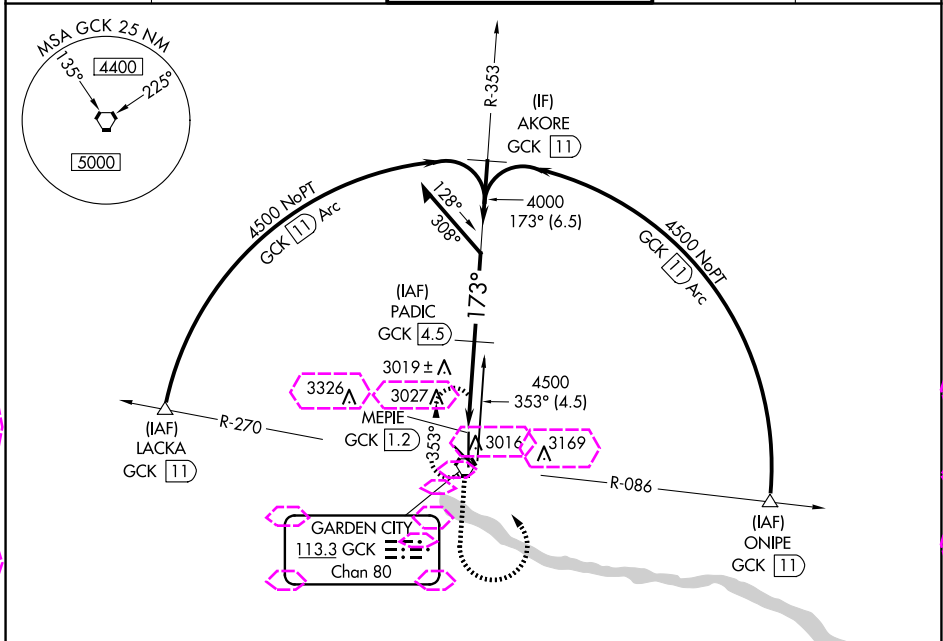
# VOR/DME RWY 17

GARDEN CITY RGNL (GCK)

**⚠** When local altimeter setting not received, use Dodge City Rgnl altimeter setting and increase all MDA 140 feet and Circling Cat C visibility ½ SM and Circling Cat D visibility ¼ SM.  
**⚠** VDP NA when using Dodge City altimeter setting.

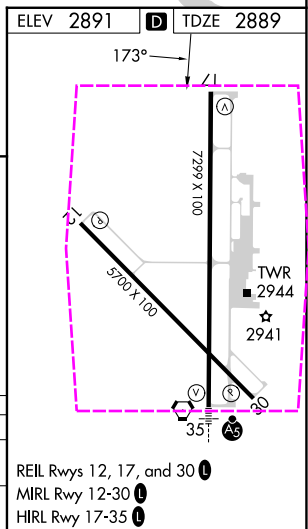
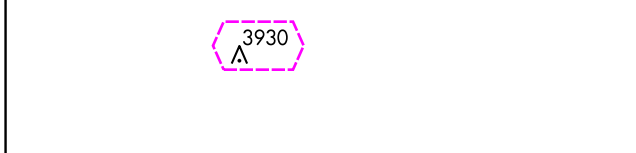
**MISSED APPROACH:**  
Climb to 4500, then left turn direct GCK VORTAC and hold.

ASOS <b>121.325</b>	KANSAS CITY CENTER <b>125.2 285.425</b>	GARDEN CITY TOWER * <b>118.15 (CTAF) 254.4</b>	GND CON <b>119.0 254.4</b>	UNICOM <b>122.95</b>
------------------------	--	---	-------------------------------	-------------------------



NC-2, 30 OCT 2025 to 27 NOV 2025

NC-2, 30 OCT 2025 to 27 NOV 2025



4500	GCK	PADIC GCK 4.5	Remain within 10 NM
MEPIE GCK 1.2	GCK 2.3	353°	4500
1.1 NM	2.2 NM	173°	4000
≤ 3.07° TCH 39			

CATEGORY	A	B	C	D
S-17		3280-1 391 (400-1)		3280-1½ 391 (400-1½)
<b>C</b> CIRCLING	3320-1 429 (500-1)	3360-1 469 (500-1)	3480-1½ 589 (600-1½)	3480-2 589 (600-2)

GARDEN CITY, KANSAS  
Amdt 2B 08OCT20

37°56'N-100°43'W

# GARDEN CITY RGNL (GCK) VOR/DME RWY 17

GARDEN CITY, KANSAS

AL-491 (FAA)

25331

VORTAC GCK <b>113.3</b> Chan <b>80</b>	APP CRS <b>173°</b>	Rwy Ldg <b>7299</b> TDZE <b>2889</b> Apt Elev <b>2891</b>
--	------------------------	---

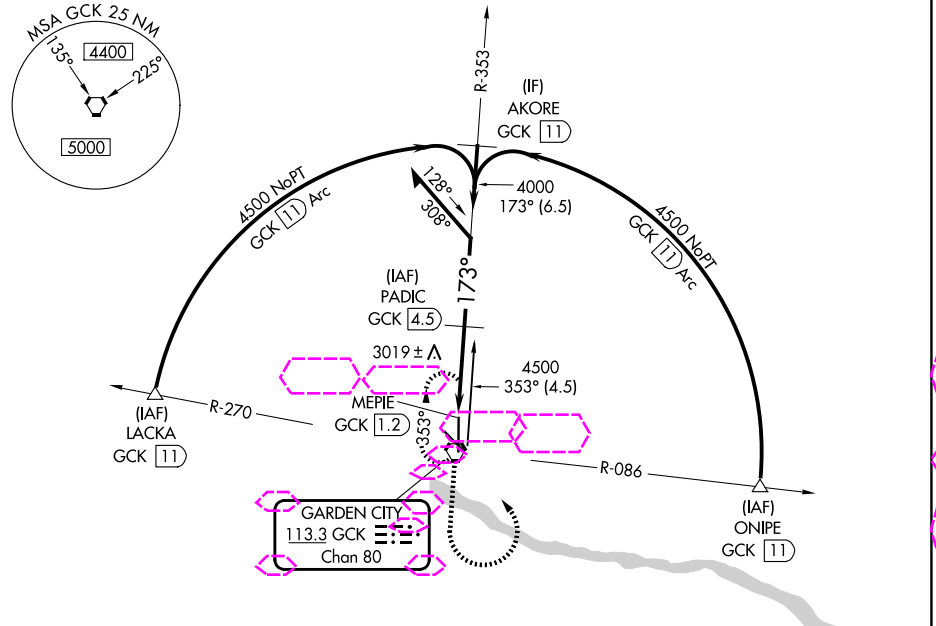
# VOR/DME RWY 17

GARDEN CITY RGNL (GCK)

**⚠** When local altimeter setting not received, use Dodge City Rgnl altimeter setting and increase all MDA 140 feet and Circling Cat C visibility ½ SM and Circling Cat D visibility ¼ SM. VDP NA when using Dodge City altimeter setting.

**⚠** MISSED APPROACH: Climb to 4500, then left turn direct GCK VORTAC and hold.

ASOS <b>121.325</b>	KANSAS CITY CENTER <b>125.2 285.425</b>	GARDEN CITY TOWER * <b>118.15 (CTAF) 254.4</b>	GND CON <b>119.0 254.4</b>	UNICOM <b>122.95</b>
------------------------	--	---	-------------------------------	-------------------------

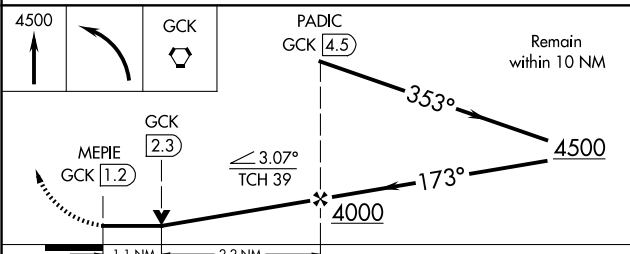
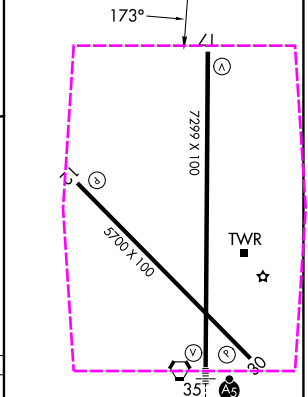


NC-2, 27 NOV 2025 to 25 DEC 2025

NC-2, 27 NOV 2025 to 25 DEC 2025



ELEV 2891 **D** TDZE 2889



CATEGORY	A	B	C	D
S-17		3280-1 391 (400-1)		3280-1½ 391 (400-1½)
<b>CIRCLING</b>	3320-1 429 (500-1)	3360-1 469 (500-1)	3480-1½ 589 (600-1½)	3480-2 589 (600-2)

REIL Rwy 12, 17, and 30 **Ⓛ**  
MIRL Rwy 12-30 **Ⓛ**  
HIRL Rwy 17-35 **Ⓛ**

GARDEN CITY, KANSAS  
Amdt 2B 08OCT20

37°56'N-100°43'W

# GARDEN CITY RGNL (GCK) VOR/DME RWY 17