

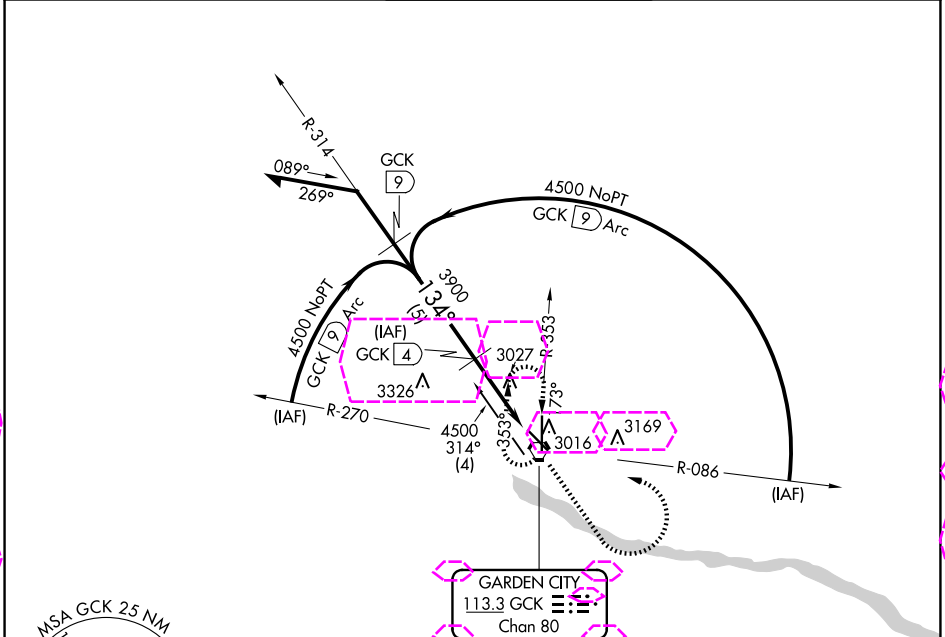
VORTAC GCK <b>113.3</b> Chan <b>80</b>	APP CRS <b>134°</b>	Rwy Idg TDZE <b>2891</b> Apt Elev <b>2891</b>
--	------------------------	---

# VOR/DME RWY 12

GARDEN CITY RGNL (GCK)

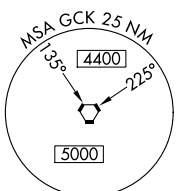
**MISSED APPROACH:** Climb to 4000 then climbing left turn to 4500 direct GCK VORTAC and hold.

ASOS <b>121.325</b>	KANSAS CITY CENTER <b>125.2 285.425</b>	GARDEN CITY TOWER * <b>118.15 (CTAF) 0 254.4</b>	GND CON <b>119.0 254.4</b>	UNICOM <b>122.95</b>
------------------------	--	---	-------------------------------	-------------------------



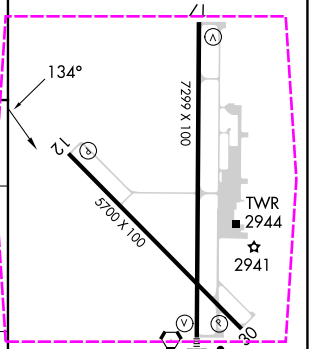
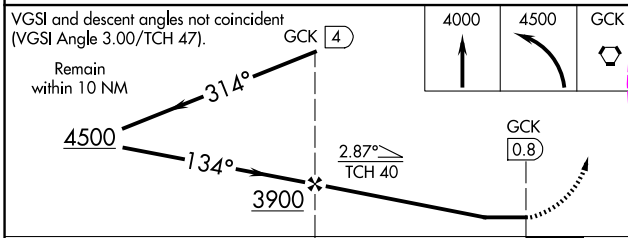
NC-2, 30 OCT 2025 to 27 NOV 2025

NC-2, 30 OCT 2025 to 27 NOV 2025



**▲3930**

ELEV 2891	<b>D</b>	TDZE 2891
-----------	----------	-----------



CATEGORY	A	B	C	D
S-12		3280-1 389 (400-1)		3280-1¼ 389 (400-1¼)
<b>CIRCLING</b>	3320-1 429 (500-1)	3360-1 469 (500-1)	3480-1½ 589 (600-1½)	3480-2 589 (600-2)

REIL Rwy 12, 17, and 30 **L**  
 MRL Rwy 12-30 **L**  
 HIRL Rwy 17-35 **L**

GARDEN CITY, KANSAS

AL-491 (FAA)

25331

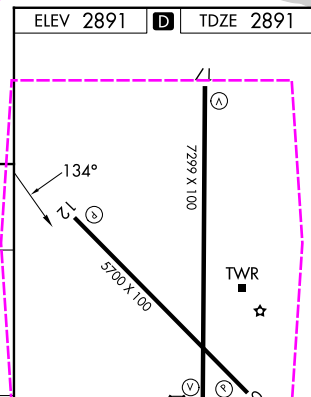
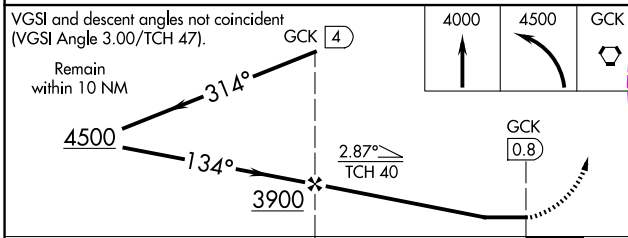
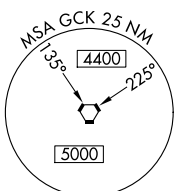
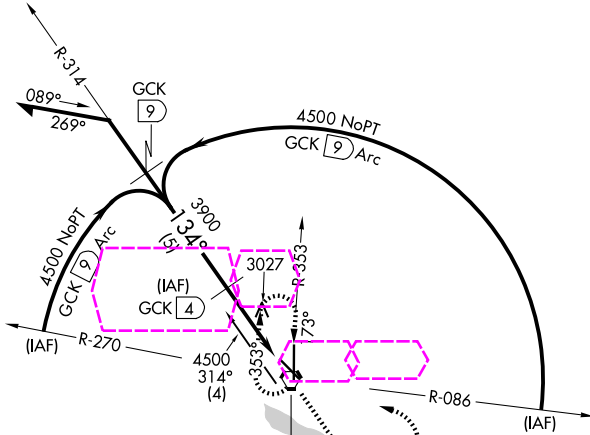
VORTAC GCK <b>113.3</b> Chan <b>80</b>	APP CRS <b>134°</b>	Rwy Ldg TDZE Apt Elev <b>5700</b> <b>2891</b> <b>2891</b>
--	------------------------	--

# VOR/DME RWY 12

GARDEN CITY RGNL (GCK)

MISSED APPROACH: Climb to 4000 then climbing left turn to 4500 direct GCK VORTAC and hold.

ASOS <b>121.325</b>	KANSAS CITY CENTER <b>125.2 285.425</b>	GARDEN CITY TOWER * <b>118.15 (CTAF) 0 254.4</b>	GND CON <b>119.0 254.4</b>	UNICOM <b>122.95</b>
------------------------	--	---	-------------------------------	-------------------------



CATEGORY	A	B	C	D
S-12		3280-1 389 (400-1)		3280-1¼ 389 (400-1¼)
<b>CIRCLING</b>	3320-1 429 (500-1)	3360-1 469 (500-1)	3480-1½ 589 (600-1½)	3480-2 589 (600-2)

REIL Rwy 12, 17, and 30

MIRL Rwy 12-30

HIRL Rwy 17-35

GARDEN CITY, KANSAS  
Orig-C 08OCT20

37°56'N-100°43'W

# GARDEN CITY RGNL (GCK) VOR/DME RWY 12

NC-2, 27 NOV 2025 to 25 DEC 2025

NC-2, 27 NOV 2025 to 25 DEC 2025