

GARDEN CITY, KANSAS

AL-491 (FAA)

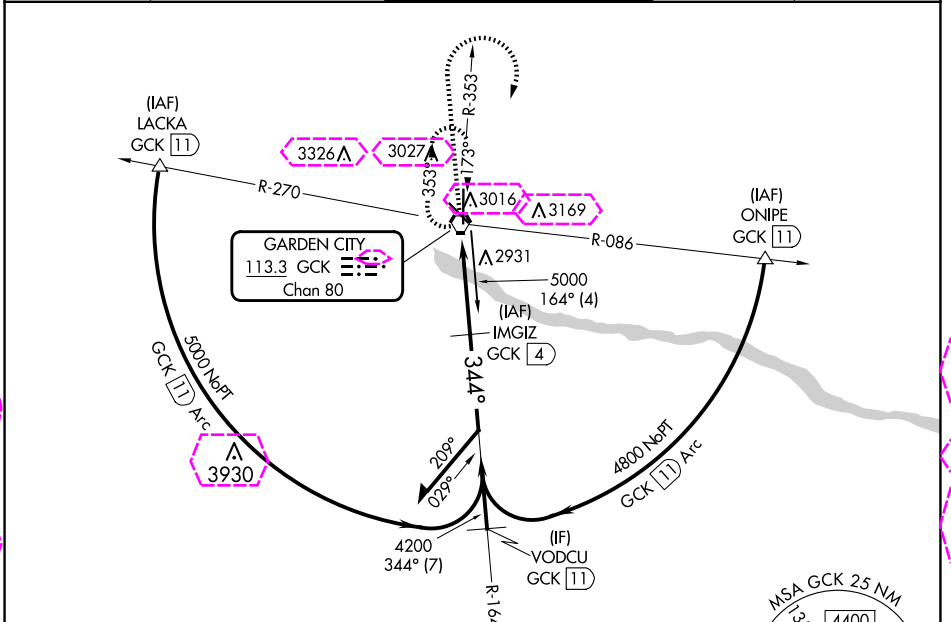
24221

VORTAC GCK 113.3 Chan 80	APP CRS 344°	Rwy Idg 7299 TDZE 2885 Apt Elev 2891
--	------------------------	---

VOR RWY 35

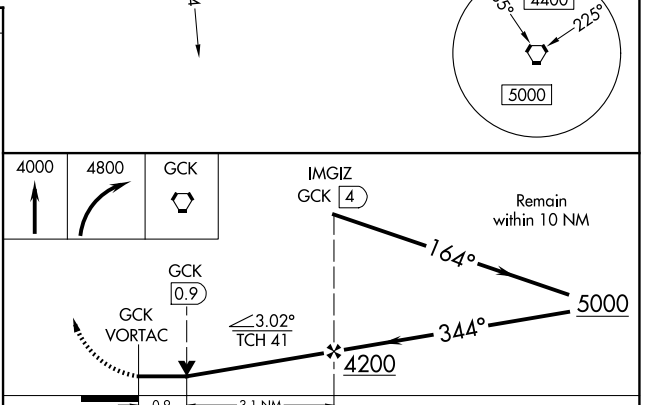
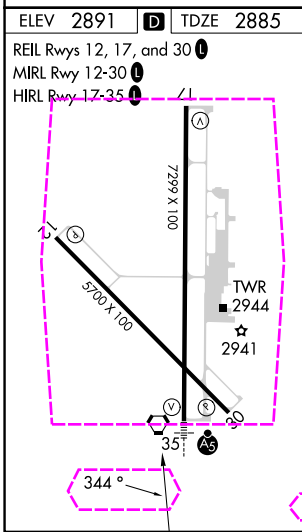
GARDEN CITY RGNL (GCK)

DME required.		MALS R	MISSED APPROACH: Climb to 4000 then climbing right turn to 4800 direct GCK VORTAC and hold.	
ASOS 121.325	KANSAS CITY CENTER 125.2 285.425	GARDEN CITY TOWER ★ 118.15 (CTAF) 0 254.4	GND CON 119.0 254.4	UNICOM 122.95



NC-2 30 OCT 2025 to 27 NOV 2025

NC-2 30 OCT 2025 to 27 NOV 2025



CATEGORY	A	B	C	D
S-35	3200-1/2 315 (400-1/2)	3200-3/4 315 (400-3/4)	3200-3/4 315 (400-1)	3200-1 315 (400-1)
CIRCLING	3320-1 429 (500-1)	3360-1 469 (500-1)	3480-1 589 (600-1 1/2)	3480-2 589 (600-2)

GARDEN CITY, KANSAS
Amdt 2B 08OCT20

37°56'N-100°43'W

GARDEN CITY RGNL (GCK)
VOR RWY 35

GARDEN CITY, KANSAS

AL-491 (FAA)

25331

VORTAC GCK 113.3 Chan 80	APP CRS 344°	Rwy Ldg 7299 TDZE 2885 Apt Elev 2891
--	------------------------	---

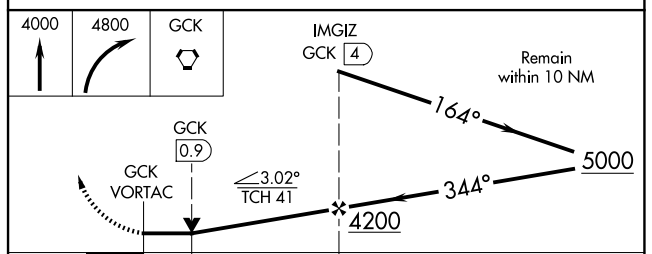
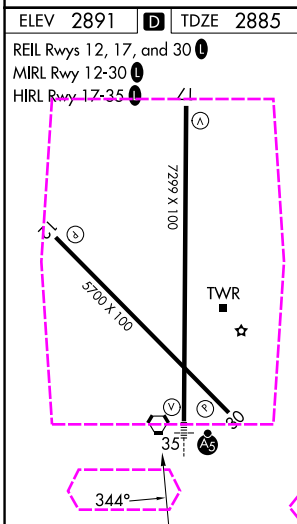
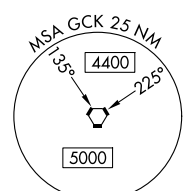
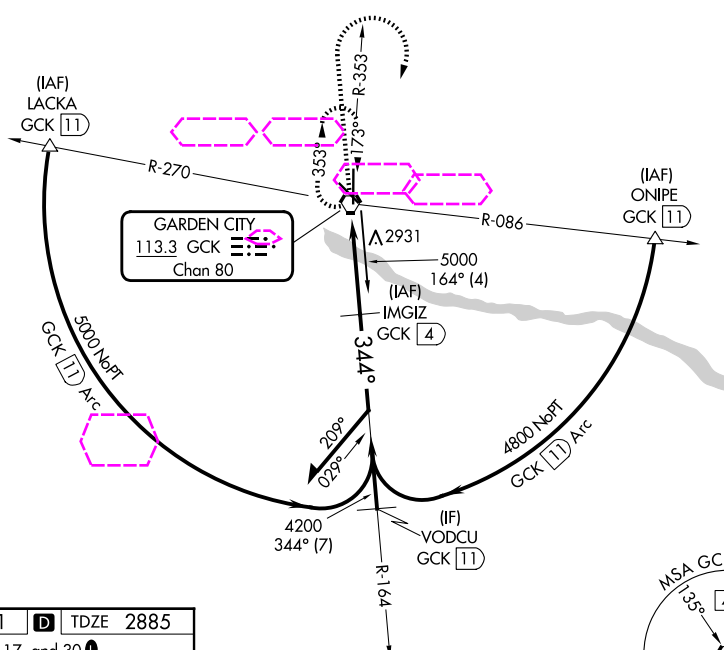
VOR RWY 35

GARDEN CITY RGNL (GCK)

DME required.		MALS R	MISSED APPROACH: Climb to 4000 then climbing right turn to 4800 direct GCK VORTAC and hold.	
<p>▼ For inop ALS, increase S-35 Cat C visibility to ¾ SM. ▲ Inop table does not apply to S-35 Cat D.</p>				
ASOS 121.325	KANSAS CITY CENTER 125.2 285.425	GARDEN CITY TOWER ★ 118.15 (CTAF) 0 254.4	GND CON 119.0 254.4	UNICOM 122.95

NC-2, 127 NOV 2025 to 25 DEC 2025

NC-2, 27 NOV 2025 to 25 DEC 2025



CATEGORY	A	B	C	D
S-35	3200-½ 315 (400-½)		3200-¾ 315 (400-¾)	3200-1 315 (400-1)
CIRCLING	3320-1 429 (500-1)	3360-1 469 (500-1)	3480-1½ 589 (600-1½)	3480-2 589 (600-2)

GARDEN CITY, KANSAS
Amdt 2B 08OCT20

37°56'N-100°43'W

GARDEN CITY RGNL (GCK)
VOR RWY 35