

GARDEN CITY, KANSAS

AL-491 (FAA)

23110

VORTAC GCK 113.3 Chan 80	APP CRS 173°	Rwy Idg 7299 TDZE 2889 Apt Elev 2891
--	------------------------	---

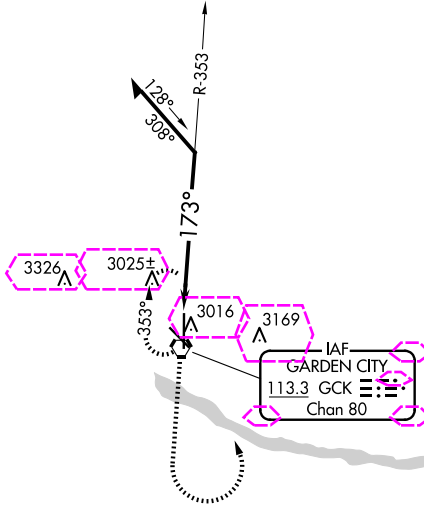
VOR RWY 17

GARDEN CITY RGNL (GCK)

⚠ When local altimeter setting not received, use Dodge City Rgnl altimeter setting and increase all MDA 140 feet and Circling Cat C visibility ½ SM and Circling Cat D visibility ¼ SM. VDP NA when using Dodge City Rgnl altimeter setting.

MISSED APPROACH:
Climb to 4000, then climbing left turn to 4500 direct GCK VORTAC and hold.

ASOS 121.325	KANSAS CITY CENTER 125.2 285.425	GARDEN CITY TOWER * 118.15 (CTAF) 0 254.4	GND CON 119.0 254.4	UNICOM 122.95
------------------------	--	---	-------------------------------	-------------------------

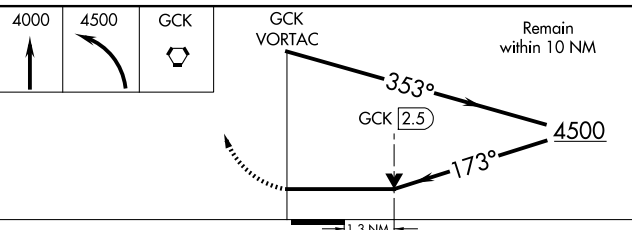
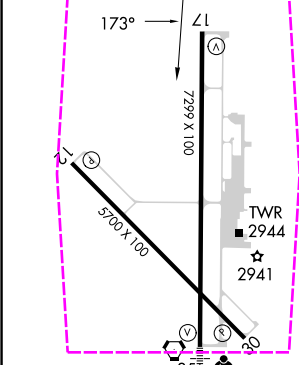
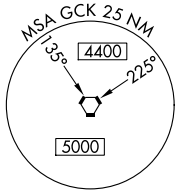


NC-2, 30 OCT 2025 to 27 NOV 2025

NC-2, 30 OCT 2025 to 27 NOV 2025

A3930

ELEV 2891	D	TDZE 2889
-----------	----------	-----------



REIL Rwy 12, 17, and 30
MIRL Rwy 12-30
HIRL Rwy 17-35

CATEGORY	A	B	C	D
S-17	3340-1	451 (500-1)	3340-1¼ 451 (500-1¼)	3340-1½ 451 (500-1½)
CIRCLING	3340-1 449 (500-1)	3360-1 469 (500-1)	3480-1½ 589 (600-1½)	3480-2 589 (600-2)

GARDEN CITY, KANSAS
Amdt 11B 08OCT20

37°56'N-100°43'W

GARDEN CITY RGNL (GCK)
VOR RWY 17

GARDEN CITY, KANSAS

AL-491 (FAA)

25331

VORTAC GCK 113.3 Chan 80	APP CRS 173°	Rwy Ldg 7299 TDZE 2889 Apt Elev 2891
--	------------------------	---

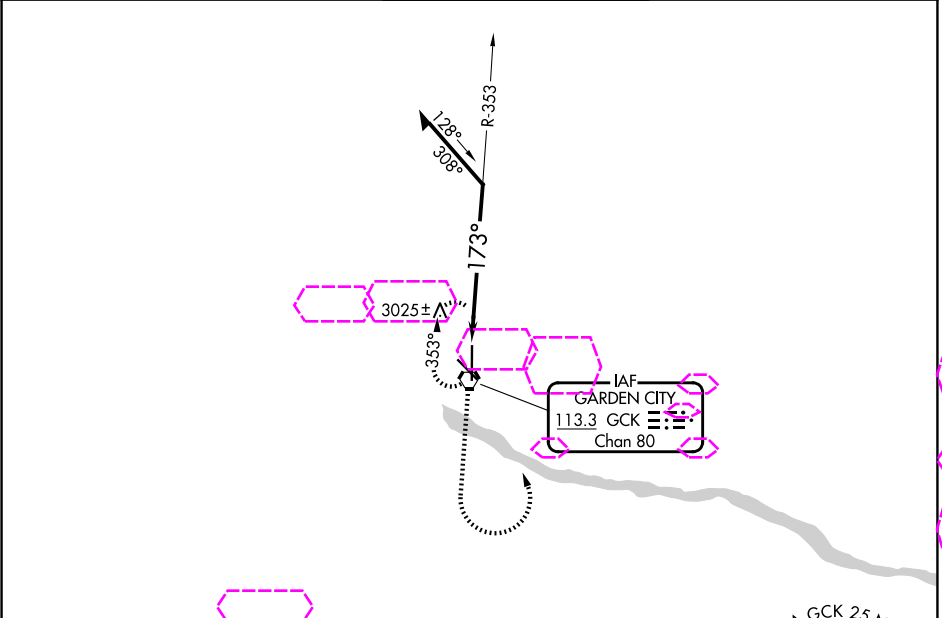
VOR RWY 17

GARDEN CITY RGNL (GCK)

⚠ When local altimeter setting not received, use Dodge City Rgnl altimeter setting and increase all MDA 140 feet and Circling Cat C visibility ½ SM and Circling Cat D visibility ¼ SM. VDP NA when using Dodge City Rgnl altimeter setting.

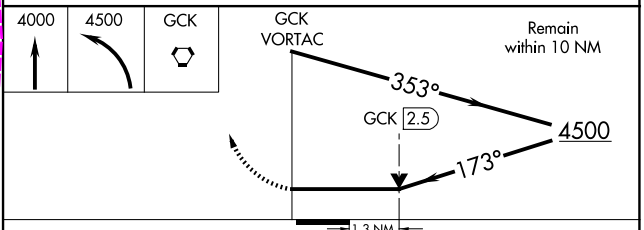
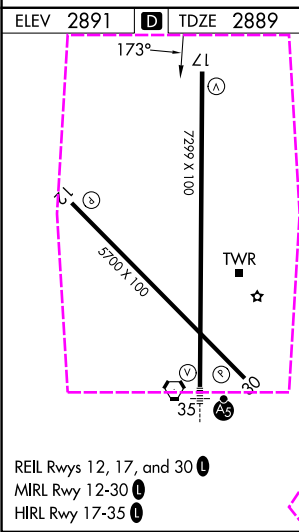
MISSED APPROACH:
Climb to 4000, then climbing left turn to 4500 direct GCK VORTAC and hold.

ASOS 121.325	KANSAS CITY CENTER 125.2 285.425	GARDEN CITY TOWER * 118.15 (CTAF) 0 254.4	GND CON 119.0 254.4	UNICOM 122.95
------------------------	--	---	-------------------------------	-------------------------



NC-2, 127 NOV 2025 to 25 DEC 2025

NC-2, 27 NOV 2025 to 25 DEC 2025



CATEGORY	A	B	C	D
S-17	3340-1	451 (500-1)	3340-1¼ 451 (500-1¼)	3340-1½ 451 (500-1½)
CIRCLING	3340-1 449 (500-1)	3360-1 469 (500-1)	3480-1½ 589 (600-1½)	3480-2 589 (600-2)

GARDEN CITY, KANSAS
Amdt 11B 08OCT20

37°56'N-100°43'W

GARDEN CITY RGNL (GCK) VOR RWY 17