

GARDEN CITY, KANSAS

AL-491 (FAA)

23110

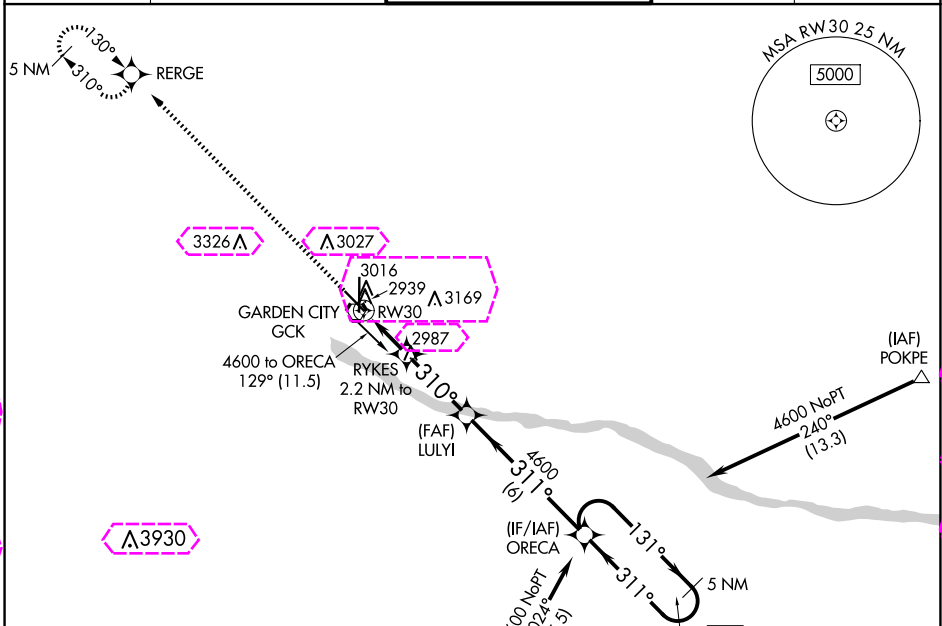
WAAS CH 86703 W30A	APP CRS 310°	Rwy Idg 5700 TDZE 2885 Apt.Elev 2891
--	------------------------	---

RNAV (GPS) RWY 30

GARDEN CITY RGNL (GCK)

RNP APCH-GPS.		MISSED APPROACH: Climb to 4500 direct RERGE and hold.		
<p>▼ For uncompensated Baro-VNAV systems, LNAV/VNAV NA below -20°C or above 54°C.</p>				

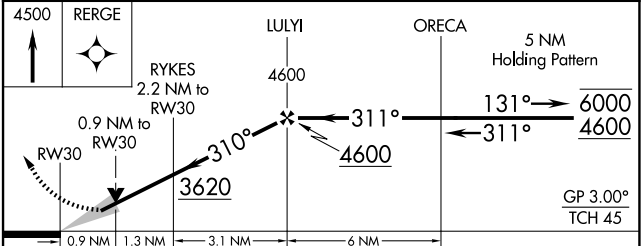
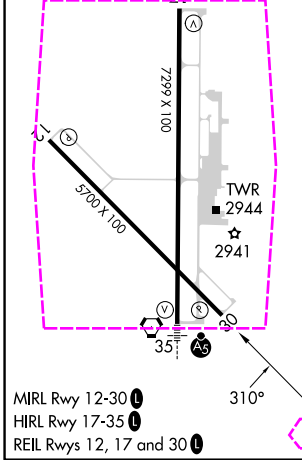
ASOS 121.325	KANSAS CITY CENTER 125.2 285.425	GARDEN CITY TOWER ★ 118.15 (CTAF) 0 254.4	GND CON 119.0 254.4	UNICOM 122.95
------------------------	--	---	-------------------------------	-------------------------



NC-2 30 OCT 2025 to 27 NOV 2025

NC-2 30 OCT 2025 to 27 NOV 2025

ELEV 2891	D	TDZE 2885
-----------	----------	-----------



CATEGORY	A	B	C	D
LPV DA		3135-1	250 (300-1)	
LNAV/VNAV DA		3137-1	252 (300-1)	
LNAV MDA		3200-1	315 (400-1)	
CIRCLING	3320-1 429 (500-1)	3360-1 469 (500-1)	3480-1½ 589 (600-1½)	3480-2 589 (600-2)

GARDEN CITY, KANSAS
Amdt 1 03NOV22

37°56'N-100°43'W

RNAV (GPS) RWY 30

GARDEN CITY RGNL (GCK)

