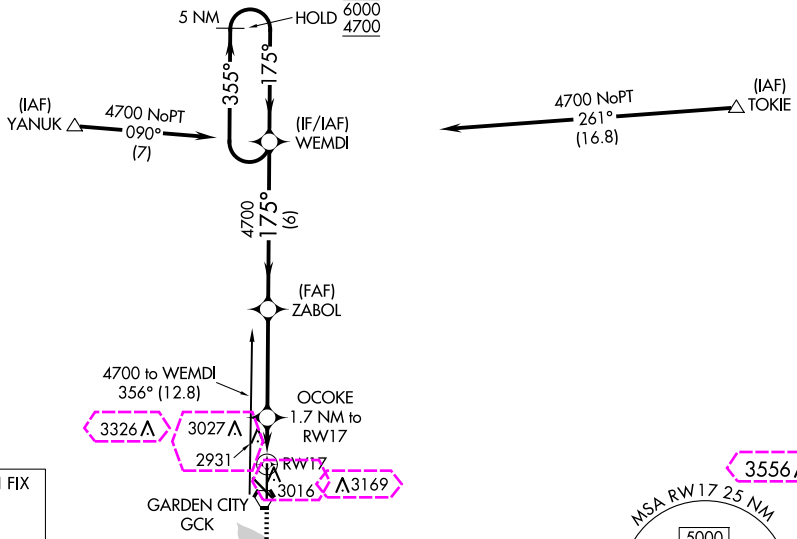


WAAS CH 42803 W17A	APP CRS 175°	Rwy Idg 7299 TDZE 2889 Apt Elev 2891
--------------------------	-----------------	---

RNAV (GPS) RWY 17

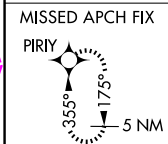
GARDEN CITY RGNL (GCK)

RNP APCH - GPS.		MISSED APPROACH: Climb to 4800 direct PIRY and hold.		
<p>▼ For uncompensated Baro-VNAV systems, LNAV/VNAV</p> <p>▲ NA below -20°C or above 54°C.</p>				
ASOS 121.325	KANSAS CITY CENTER 125.2 285.425	GARDEN CITY TOWER* 118.15 (CTAF) 0 254.4	GND CON 119.0 254.4	UNICOM 122.95

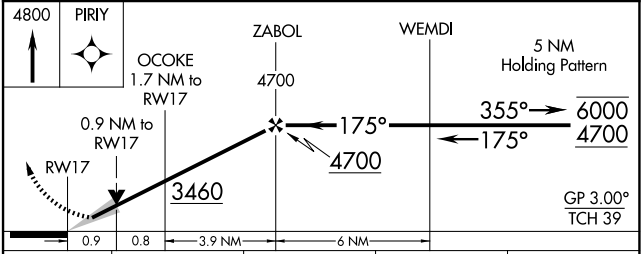
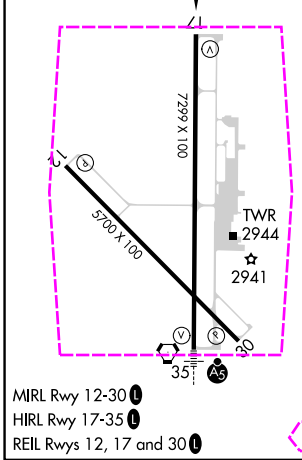


NC-2: 30 OCT 2025 to 27 NOV 2025

NC-2: 30 OCT 2025 to 27 NOV 2025



ELEV 2891	D	TDZE 2889
-----------	----------	-----------



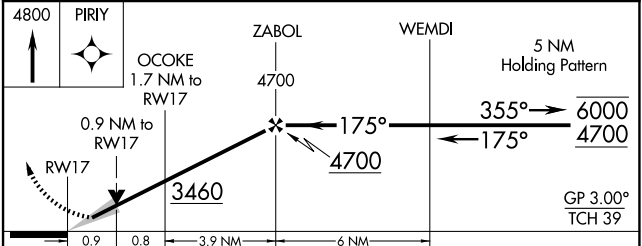
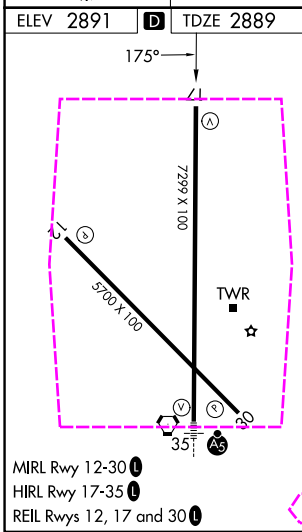
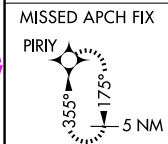
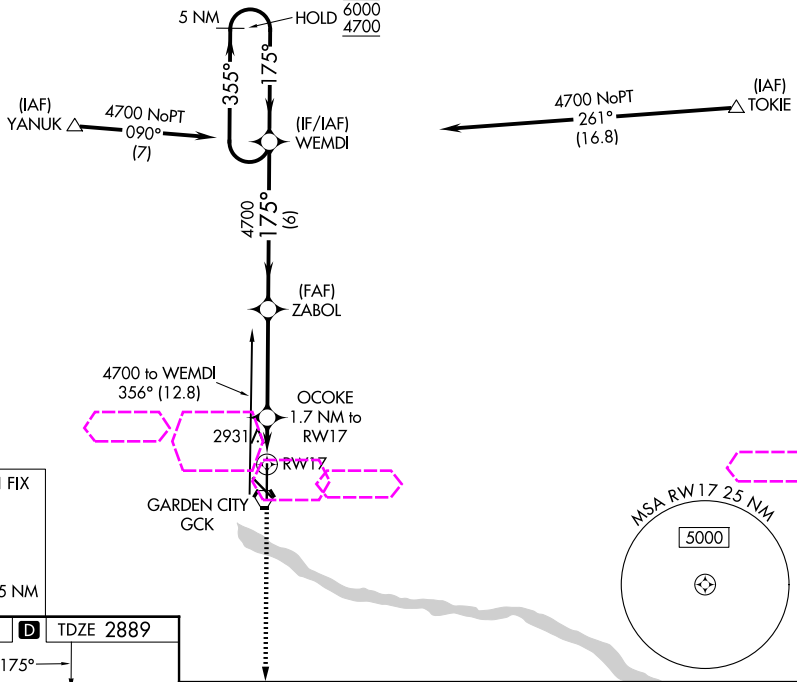
CATEGORY	A	B	C	D
LPV DA	3089- ³ / ₄ 200 (200- ³ / ₄)			
LNAV/VNAV DA	3139- ³ / ₄ 250 (300- ³ / ₄)			
LNAV MDA	3200-1	311 (400-1)	3200- ⁷ / ₈	311 (400- ⁷ / ₈)
CIRCLING	3320-1 429 (500-1)	3360-1 469 (500-1)	3480-1½ 589 (600-1½)	3480-2 589 (600-2)

WAAS CH 42803 W17A	APP CRS 175°	Rwy Ldg TDZE Apt Elev	7299 2889 2891
--	------------------------	-----------------------------	---

RNAV (GPS) RWY 17

GARDEN CITY RGNL (GCK)

RNP APCH - GPS.		MISSED APPROACH: Climb to 4800 direct PIRIY and hold.	
<p>▼ For uncompensated Baro-VNAV systems, LNAV/VNAV</p> <p>▲ NA below -20°C or above 54°C.</p>			
ASOS 121.325	KANSAS CITY CENTER 125.2 285.425	GARDEN CITY TOWER* 118.15 (CTAF) 0 254.4	GND CON 119.0 254.4
		UNICOM 122.95	



CATEGORY	A	B	C	D
LPV DA	3089- ³ / ₄ 200 (200- ³ / ₄)			
LNAV/VNAV DA	3139- ³ / ₄ 250 (300- ³ / ₄)			
LNAV MDA	3200-1	311 (400-1)	3200- ⁷ / ₈ 311 (400- ⁷ / ₈)	
CIRCLING	3320-1 429 (500-1)	3360-1 469 (500-1)	3480-1½ 589 (600-1½)	3480-2 589 (600-2)

NC-2, 27 NOV 2025 to 25 DEC 2025

NC-2, 27 NOV 2025 to 25 DEC 2025